



 **TRA**

Taiwan
Railways
Administration

2015 Yearbook

2015 Yearbook of Taiwan Railways Administration, MOTC

Summary of Main Events
in the Year



Preface

by the Director
General

TRA is closely connected with people's lives since the start of its operations, and also plays a leading role in social and economic development. Moreover, the railway electrification is an important indicator of modernized operations in TRA. After the New Puyuma Express that travels from Taipei to Taitung was shown on the New Monthly Calendar in 2015, it strengthened the linkage of Taroko Express to travel in North Taiwan from Taichung to Hualien, and successfully expanded the friendly and convenient railway transportation in East Taiwan. Especially with the holding of the first Formosa Railroad Bento Festival and the planning of the Hello Kitty Painted Train of the New Taroko Express, TRA connects us with a beautiful life.

For the purpose of sustainable operations, TRA actively improves its operational performance and service quality, and intensifies its cooperation and communication with international railway companies. It signed a technical cooperation agreement with Deutsche Bahn (DB) and Railway Technical Research Institute (RTRI) to enhance its railway construction capabilities and technical strength. Moreover, it introduces new trains constantly to set up a quality fleet, so as to improve its service in the North, Middle, South and East regions, and meet the challenge of transporting one million passengers every day. It also intensified talent training and cultivation, and in order to revive industrial-academic collaboration, TRA is working with National Cheng Kung University to lay a solid foundation for the cultivation of talents.

2015 was a fruitful year for TRA. With its transportation operations in Taiwan, we need your encouragement, support and patience. We believe, with the pursuit of technology, talent cultivation and goal management, we can actively create sustainable and seamless railway transportation facilities, and embrace our new mission in this era of railway revival.



TRA Vision, Organization and Operation



- I. Vision, Operational Goals and Operational Strategies
- II. Organization and Manpower
- III. Operation Facilities

I Vision, Operational Goals and Operational Strategies

(I)



(II) Operational Strategies - for Operation Management

- 1 Carry out general design, constantly build accessible space, and create a modern and friendly transportation environment.
- 2 Promote seamless transportation, link together various passenger transportation modes such as bus, MRT and high-speed rail for ticket check, train number information and station integration, and provide quality transportation service.
- 3 Strengthen the middle and long distance and cross-line transportation for the trunk line in the east region; strengthen the regional transportation for the trunk line in the west region, in order to speed up travel time.
- 4 Integrate railway culture, promote horizontal alliance, strengthen marketing strategies, provide customized service and develop new customer groups.
- 5 Increase environmental awareness and promote people-oriented design principles for sustainable development; utilize existing assets effectively, develop journey, travel and life service businesses; create TOD benefits integrated with transport construction and land development, making TRA the one to connect people's lives.
- 6 Promote Assets Activation for Debt Pay-off Program; through the promotion of participation in construction, urban renewal and superficies setting and other diverse development methods, select the key assets for prioritized construction, so as to achieve debt pay-off effect quickly.
- 7 Comprehensively intensify and carry out staff law education and Public Servants' Code of Ethics.
- 8 Enhance the internal communication and coordination in the enterprise; establish a harmonious working relationship.
- 9 Strengthen in-service training and appraisal such as staff risk management and crisis management, strengthen disaster-prevention and anti-terrorism mechanism and improve emergency response capability, so as to guarantee the safety of trains and passengers.

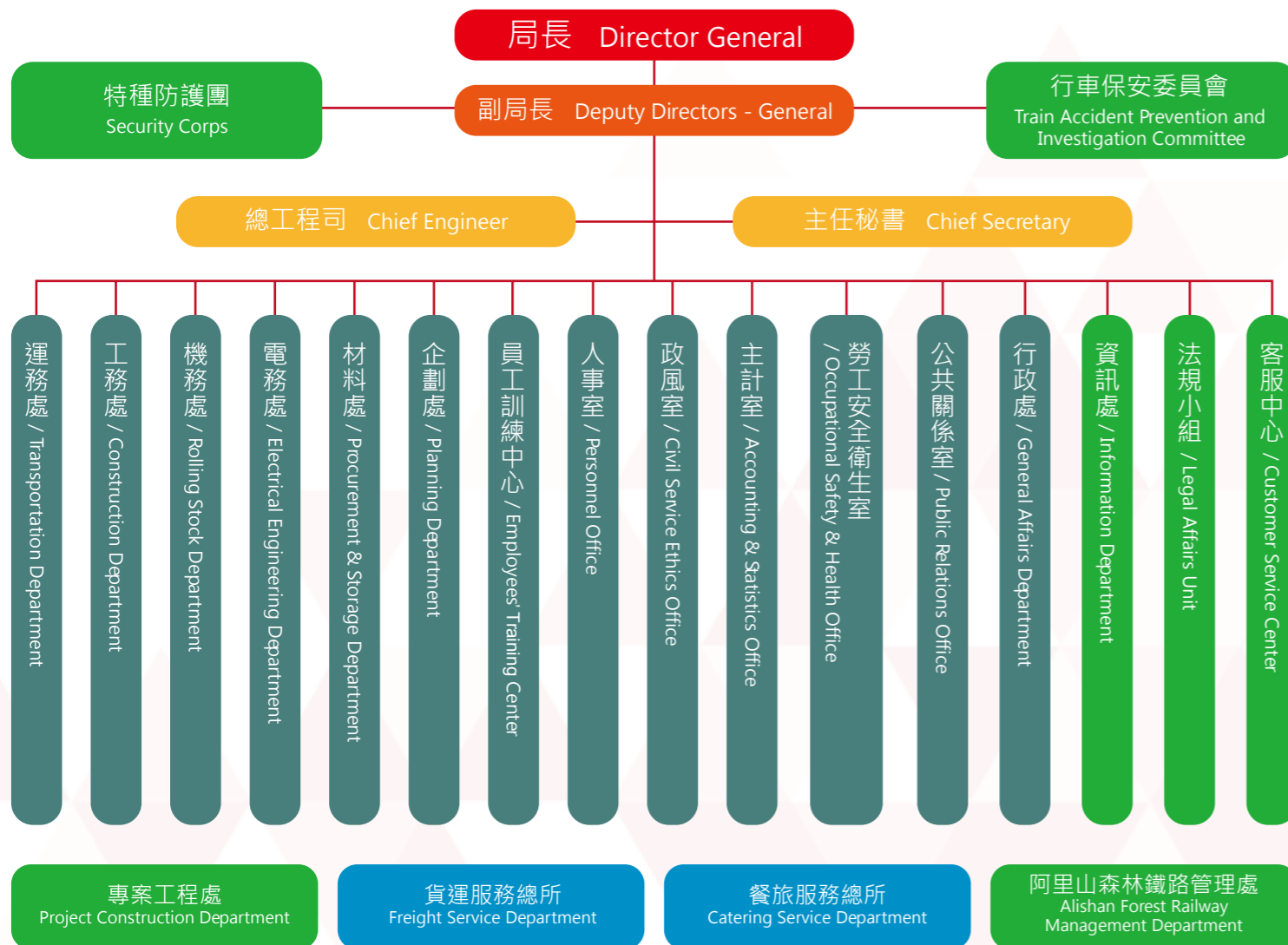
(III) Operational Strategies - for demand-supply involved parties

- 1 Accelerate purchasing and changing operational trains, simplify train types and improve service quality.
- 2 Continue the New Building Program for Taipei Workshop and Kaohsiung Workshop, improve train repair skills and quality, and ensure train safety; promote development and operation, as well as the railway culture preservation in the original workshop location, so as to expand the fields of associated business.
- 3 Continue the TRA Program after MRT Construction in Urban Areas, add more stations and local trains, so as to expand the TRA commuting range and shorten journey time and train running distance.
- 4 Promote automatic computer scheduling system gradually, improve scheduling and dispatching function to ensure capacity meets the transport demands of the passengers.

Organization and Manpower

In the initial period after Taiwan Retroration, the Central Government chartered the Taiwan Provincial Government to take charge of the operations and management of the railways in Taiwan. In 1945, the Taiwan Railways Management Commission was set up. In 1948, Taiwan Railway Management Bureau was set up, which was affiliated to MOTC (Ministry of Transportation and Communications) since July 1, 1999. TRA, under the Director General, Deputy Directors—General, Chief Engineer and Chief Secretary, set up 13 units including the Transportation Department, Construction Department, Rolling Stock Department, Electrical Engineering Department, Procurement & Storage Department, General Affairs Department, Planning Department, Accounting & Statistics Office, Public Relations Office, Personnel Office, Civil Service Ethics Office, Occupational Safety & Health Office, and Employees' Training Center; 7 task forces including the Information Department, Security Corps, Legal Affairs Unit, Train Accident Prevention and Investigation Committee, Project Construction Department, Customer Service Center, and Alishan Forest Railway Management Department; 2 affiliated institutions including the Freight Service Department and Catering Service Department. Moreover, it set up 43 branch units including plants, depots, centers, offices and teams not located in TRA.

TRA's budget employee number for 2015 is 14,552, while the actual number is 13,557 by December of 2015.



(I) Organization and Major Businesses of the Transportation Department

1 It has 3 divisions, namely, the Operations Division, Transfer Division and General Evaluation Division; several branch institutions of the Comprehensive Dispatching Office, Ticket Affairs Center and 5 transportation depots located in Taipei, Taichung, Kaohsiung, Yilan and Hualien. It is mainly responsible for passenger and cargo transportation services, operation strategies, train dispatching and management, conductor dispatching, maintenance, renewal and management of transportation facilities at the station, as well as the in-service training for employees.

2 Among the 4,672 employees in the Transportation Department, there are 790 train conductors and guards; 3,480 station affairs personnel; 184 administration personnel; 176 employees in the Comprehensive Dispatching Office; 19 employees in the Ticket Center; and 23 employees in the Customer Service Center.

- 3 **Future Key Businesses**
- ❖ Improve the ticketing system: Update the generation IV of the ticketing system, plan the introduction of revenue management and resolve ticket booking bottleneck during peak hours.
 - ❖ Provide differentiated fares reasonably: Provide differentiated fares based on the train types, stations, peak/off-peak hours and branch lines, to make TRA's fare more flexible and competitive.
 - ❖ Promote seamless transportation: Strengthen the transfer and ferry between high-speed rail, MRT and other modes of passenger transportation, and integrate with the e-ticket system, train number and information in the station, so as to construct a high-quality transportation service.
- ❖ Develop railway tourism:
- ▶ Sell ticket package for the cruise-style train, increase the value added for tourism. Purchase eco-trains for the branch lines, promote tourism among the branches actively.
 - ▶ Cooperate with the government to promote biking events, add more bike trains, and create friendly transportation facilities for the passenger.
 - ▶ Through railway linkage with Japan, promote the development of the tourism in both countries.
 - ▶ Promote freight transformation: Develop green transportation, increase the running speed of cargo trains, reduce the waiting time during the crossing of trains, and improve the turnover rate of the cargo trains.

(II) Organization and Major Businesses of the Construction Department

1 It has 3 divisions: Management Division, Line Division and Bridge & Tunnel Division. Moreover, it is in charge of 7 construction depots including the Taipei Construction Depot, Taichung Construction Depot, Chiayi Construction Depot, Kaohsiung Construction Depot, Yilan Construction Depot, Hualien Construction Depot and Taitung Construction Depot, and the General Construction Maintenance Team.

2 Among the 1,918 employees in the Construction Department, there are 1391 road course workers, and 527 administration personnel.

- 3 **Future key businesses**
- ❖ Improve the safety and stability of the line
 - ❖ Improve railway maintenance capability
 - ❖ Standardize facilities at each station and improve service quality
 - ❖ Improve the safety of bridges, tunnels and slopes along the line
 - ❖ Improve bottlenecked sections and make the railway network more convenient
 - ❖ 6-Year Program to Improve the Safety of Trains Running on the Railway
 - ❖ Program to Improve Safety around the Island
 - ❖ Overhead Construction Program in Taoyuan Section

(III) Organization and Major Businesses of the Rolling Stock Department

1 It has 3 divisions: Operating Technique Division, Train Division and General Evaluation Division. The branch institutions under it include 3 workshops consisting of the Taipei Workshop, Kaohsiung Workshop, and Hualien Workshop; 8 depots which are the Taipei Locomotive Depot, Hsinchu Locomotive Depot, Changhua Locomotive Depot, Chiayi Locomotive Depot, Kaohsiung Locomotive Depot, Hualien Locomotive Depot, Taipei Depot and Kaohsiung Depot.

2 Among the 4,601 employees in the Rolling Stock Department, there are 1350 train drivers (including the student interns); 2931 engineers in depots, and 320 administration personnel.

3 Future key businesses

- ❖ Make TRA Train Purchasing and Renewal Plan (2015-2024). TRA plans to purchase 600 inter-city trains, 520 local trains, 127 locomotives and 60 eco-trains for the branch line within 10 years starting from 2015. The main work in 2015 was to entrust investigation and make technical specifications, and conduct pre-stage planning for IV & V accreditation.

(IV) Organization and Major Businesses of the Electrical Engineering Department

1 It has 3 divisions: Signal Division, Power Division and Telecom Division. It is in charge of the operations and key infrastructure in TRA. It introduces new techniques, optimizes repair procedure, brings up new ideas and improves engineering methods, so as to constantly enhance the device performance and reliability and ensure safe transportation service. For the goals that everyone strives for, the major businesses include:

- (1) Signal system and level crossings protection facilities
- (2) Power supply and overhead catenary system
- (3) Communication and transmission system

2 Among the 1,038 employees in the Electrical Engineering Department, there are 959 technical staff (including 115 persons in the technical management team); and 79 business staff (including the 31 persons in the administrative management team)

3 Future key businesses—Signal part

- ❖ Build remote signal status monitoring system: Introduce prediction and repair, set up 30 monitoring centers (25 branch stations, 4 signal depots and offices).
- ❖ Update signal interlocking system: Update 4 stations in Shuangxi, Houtong, Ershui and Baoan to advanced electronic interlocking.
- ❖ Build new signal relay room: Build new relay rooms for 53 stations of the Changhua South line, Mountain line, Nanping line, North Coast line and Yilan line as preparation for updating electronic interlocking.
- ❖ Dual axle counter: Use dual axle counter in the sections of Keelung-Yingge, Badu-Su'ao, Zhongli-Zhunan, and Zhunan-Fengyuan, so as to increase train detection accuracy.
- ❖ Set up level crossings barrier auto-detection systems: Reduce the accident risk on the level crossings due to car breakdown.
- ❖ Set up direction indicator for large trains: Improve pedestrian identification when the train is approaching the level crossings to reduce knock out probability.
- ❖ Optical transmission of remote monitoring system on the level crossings of the trunk line and dual recording storage device: Increase the transmission bandwidth of the remote monitoring device on the level crossings and the reliability of the storage device.

3 Future key businesses—Power part

- ❖ Continue the 95mm² messenger wire renewal project to increase the flow-loading and pull-resistance ability of the overhead catenary system, and further improve the stability and reliability of the system. Around 476km is estimated to be finished in 2016~2020.
- ❖ Expand the transformer capacity of the converting station from 15MVA to 25MVA to increase the power supply capacity by 67%, and improve the reliability of the power supply.
- ❖ Purchase 17 overhead catenary cars, 9 section cars and overhead catenary inspection equipment, so as to increase the maintenance efficiency and minimize the recovery time in case of accident.

3 Future key businesses—Telecom part

- ❖ 96-core optical fiber deployment project (Phase-I)
- ❖ Around-island optical fiber monitoring system upgrade project



Innovative Businesses and Achievements



- I. Expansion of e-Ticket Coverage
- II. Convenient Ticket Booking Service
- III. Various Themed Cruise-Style Trains
- IV. Bike Eco-Trains
- V. Special Trains for Groups
- VI. Steam Train for Tourists
- VII. The administrative train DRC1001 for the Director General is Renovated as an alien-themed fantasy train named, "The Evolution 1001"
- VIII. The First Decorated Lighting Train "TRA LED Holiday Train, Make A Wish"
- IX. Enhance the Cooperation and Communication with the International Railway Corporations and Mutually Beneficial Measures for Passengers
- X. Book Stations
- XI. National Level Crossings Safety Advocacy Platform
- XII. Digital Audio-Video Learning Platform "Rail Tube"
- XIII. Railway Ethics Advocacy
- XIV. Enterprise Integrity Forum
- XV. Administrative Transparency Forum
- XVI. Communication Forum on Civil Service Ethics Platform
- XVII. Line Maintenance Innovation and Achievements

I Expansion of e-Ticket Coverage

The daily average number of passengers that use the multi-pass e-ticket service in 2015 is 320,000, which is an increase of about 26% if compared with that in the previous year, 254,000. The service is currently available in the stations of the around-island lines and branch lines under TRA (including Pingxi line, Shen'ao line, Neiwan line, Liujia line, Jiji line and Shalun line).

II Convenient Ticket Booking Service

Ticket pick-up and booking service through convenience stores.

(I) In 2015, there were about 20,814 passengers who book tickets through convenience stores every day, which is an increase of 12.4% if compared with that in the previous year, 18,523. To provide more convenient ticketing service for people, TRA will open the ticket pick-up and booking service in various convenience stores such as Uni-President, FamilyMart, Hi-Life and OK mart, so as to increase the ticket pick-up channels. This could save time and cost for the passenger when booking tickets, improve TRA's service level and make it up-to-date with the E-trend in society.

24-hour network and voice booking service

(II) The passengers may book their tickets at least one hour before the train departs on the current day, and finish payment and pick-up procedures half an hour before the train departs. Moreover, there is 24-hour booking service, which is more convenient. The pick-up records after booking are about 14,410,000 in 2015, which is an increase of 5.1% if compared with the 13,700,000 records in the previous year.

III Various Themed Cruise-Style Trains

New schedules are developed continuously, and seasonal events and festivals are integrated in the marketing plans. Strategic alliances with the local industrial associations are also established. In the whole year of 2015, TRA ran 62 cruise-style trains, which obtained a revenue of about NTD7,530,000 and carried about 13,364 passengers. Moreover, it ran 21 trains for a two-day-one-night schedule, which obtained a revenue of about NTD6,360,000 and carried 4,839 passengers.

IV Bike Eco-Trains

To respond to the energy saving, carbon reduction and biking trend, TRA runs 2 bike eco-trains for bike eco-transportation. Moreover, it provides 50% off for the bike fare, and renovates the bike coach on Tze-Chiang Express and Chu-Kwang Express, which carried 79,008 passengers in 2015.

V Special Trains for Groups

To provide group travel service for institutions and companies, TRA has been operating the "Business Coach" Special Train Project since February 2007, and providing diverse travel services for individuals. In 2015, it provided service for 23,848 passengers in total, with the revenue reaching NTD14,166,019. Besides providing comfortable and convenient travel for the passengers at home and abroad, TRA is also expanding into recreation lines to promote new development of tourism.

VI Steam Train for Tourists

After signing the Steam Locomotive Twin Train Agreement with JR Hokkaido Railway Company in 2012, TRA ran the twin anniversary train in March and ran the Summer Formosa Express, the steam locomotive in August. It ran 6 special trains of the 2015 Summer Formosa Express in three days including July 18, July 15 and August 1 in 2015. According to the statistics, the trains attracted nearly 1,400 passengers and increased the revenue by more than NTD1,500,000.

VII The administrative train DRC1001 for the Director General was Renovated as an alien-themed fantasy train named, "The Evolution 1001"

TRA commissioned Akibo Lee, a designer and artist, to renovate the administrative train DRC1001 for the Director General as the alien-themed fantasy train, "The Evolution 1001", which is about alien rail fans looking for their home. The themed train was stationed in TRA on January 26, 2015, which carried alien rail fans, Mr. Ten and Miss One, who ran along the railway sometimes.



The famous writer Lie Kexiang is appointed as the train conductor of "The Evolution 1001."

VIII The First Decorated Lighting Train "TRA LED Holiday Train, Make A Wish"

TRA combines the around-island transportation characteristics, lantern festival in the lunar new year and Taiwan lantern activities in 2015, and takes Yuanman (literally satisfactory), Jixiang (literally auspicious), Ruyi (happy) and Guanhuai (care) as the themes to open the around-island auspicious train together with the co-organizer, LDC Hotels & Resorts Group during March 1-5, 2015. The themed train consists of 1 electric locomotive and 6 coaches of Fu-Hsing Express. The train was delicately dressed and designed with LED. Each coach has a name based on the design, namely, Pingan Express, Xiwang Express, Guanhuai Express, Xiyue Express, Jixiang Express and Xingfu Express. It expresses the joy and hope for the New Year festivities. When the LED lights are turned on at night, the train becomes more magnificent, gorgeous and eye-catching.



"TRA LED Holiday Train, Make A Wish" Decorated Train Lights On and Sets Out



IX Enhance the Cooperation and Communication with International Railway Corporations and Mutually-Beneficial Measures for Passengers

Hsinchu Station forms twin station with Tokyo Station in Japan

TRA's Hsinchu Station signed an agreement to form a twin station with Tokyo Station in Japan on February 12, 2015. Hsinchu station opened in 1913 and features classic architectures of Baroque and Goethe style, which looks beautiful and elegant with historic and artistic values. On the other hand, Tokyo Station which is a key junction station in the trunk line of Japan and serves as the capital's central station, opened in 1914 and celebrated its 100th anniversary last December 2014.



Souvenir-edition one-day pass along Neiwai line

To celebrate the establishment of the twin station, TRA designed an e-ticket (EasyCard and 1-Pass), one-day pass along Neiwai line, and souvenir-edition platform ticket of Hsinchu station for those who are interested. Moreover, 1000 tourists were allowed to claim the souvenir-edition 1-pass e-ticket for free just by presenting their passports, so as to promote

the tourism activities. Aside from this, it increases the exposure of the historical Hsinchu station globally, making it worthy of the name, "Big Metropolis, Small City, Global Vision".

(I)

Pingxi line collaborated with Japan's Odakyu Electric Railway for the free exchange of the one-day pass program

Pingxi line, together with Japan's Odakyu Electric Railway (hereinafter referred to as Odakyu), held a promotion in May 2013. The two parties combined their respective railway scenic features, which are along the mountain line and the coast line, to promote tourism around Pingxi line and Kanagawa Prefecture in Japan by allowing the exchange of their respective one-day pass for free. This tourism activity was a success, so they signed the agreement last March 4, 2015 to extend the ticket exchange program from April 1, 2015 to March 31, 2016, the passengers who hold the one-day pass along Pingxi line issued by TRA can exchange it for a one-day pass of the same day in Odakyu for free. Similarly, during the same period, the foreign tourists may exchange the used Odakyu's one-day pass for the one-day pass along Pingxi line of the same day for free by presenting their passports in Taipei station or Ruifang station.

(II)

Friendly Twin Railway Agreement with Seibu Holdings, Seibu Railway Corporation

TRA officially signed the Friendship and Twin Railway Agreement with Seibu Holdings, Seibu Railway Corporation in Tokyo on March 14, 2015. This is the first treaty case signed by TRA abroad and the first collaboration signed based on the main and ancillary businesses. This was a new milestone for the Taiwan-Japan railway cooperation.



Image of Souvenir Ticket Package for TRA* Seibu Railway Twin Railway Agreement

Moreover, both parties started to sell the "Souvenir Ticket Package for TRA* Seibu Railway Twin Railway Agreement" synchronously in Taiwan and Japan in June 2015. The package includes 3 passes issued by Seibu Railway and 3 card tickets issued by TRA. The tickets are printed with the main train patterns of both parties, and marked with the date by the classic mangling machine based on Taiwan and

Japan calendar year (Taiwan uses R.O.C calendar, while Japan uses Heisei calendar). It has the significance of cultural communication and heritage, which is the first souvenir ticket package issued by Taiwan and Japan jointly.

(III)

Friendly Railway Agreement with Keihin Electric Express Railway

(IV)

TRA signed the Friendly Railway Agreement with Keihin Electric Express Railway on February 26, 2015. To remember this collaboration, various celebration activities were held in Taipei and Tokyo (Such as the electric train for publicity of friendly cooperation, issuance of souvenir tickets). Both parties plan to expand their collaboration to other fields other than the railway business to link together their resources and create a win-win situation for both parties.

It held the "Japan & Taiwan Train Stamp Rally" together with Seibu Railway, Keihin Electric Express Railway and JR East Japan

(V)

From August 25, 2015 to August 31, 2016, TRA holds the "Japan & Taiwan Train Stamp Rally" together with Seibu Railway, Keihin Electric Express Railway and JR East Japan to promote the prosperity of the tourism business in Taiwan and Japan and the development of businesses in the railway companies. Moreover, it enhances the partnership between TRA and the 3 Japan railway companies.



DM and poster of "Japan & Taiwan Train Stamp Rally"

Taipei Station establishes twin station with Osaka Station

(VI)

On December 4, 2015, TRA's Taipei station established the twin station and started to sell the souvenir ticket package with JR-west Japan "Osaka station", the representative station in the largest metropolitan area in west Japan area. It symbolizes a big step in advancing the friendly relationship between the two countries' railways.

Signing of the "Tourism Cooperation Ticket Communication Agreement" with Japan's Sanyo Electric Railway

(VII)

TRA's Yilan line established the twin railway with that of Japan's Sanyo Electric Railway on December 22, 2014 based on the line length and the characteristics of the coastal railway sceneries, as well as sharing the same station name —Guishan (Kameyama) station. To commemorate the 1st anniversary of the establishment of the twin railway, both parties signed the "Tourism Cooperation Ticket Communication Agreement" on December 21, 2015. Any Taiwanese tourist who holds an adult fare of the Northeast Corner one-day pass issued by TRA and purchases the HIMEJI TOURIST ONE-DAY PASS issued by Sanyo Electric Railway, may exchange it for a 1000-Yen preferential ticket issued by Sanyo Electric Railway especially for Taiwanese tourists. Any Japanese tourist who holds the one-day pass of Sannomiya-Himeji, Hanshin-Sanyo, Sannomiya-Akashi city, Hanshin-Akashi city, Tarumi-Maiko (Hanshin edition and Sannomiya edition) issued by Sanyo Electric Railway, may exchange it for a Northeast Corner one-day pass issued by TRA. This promotes the interaction of Taiwanese and Japanese tourists, and enhances the development of tourism along the line.

Signing of the Friendly Railway Agreement with Tobu Railway, and initiates the ticket exchange between the two parties

(VIII)

TRA signs the Friendly Railway Agreement with Tobu Railway on December 18, 2015, and initiates the ticket exchange between the two parties at the same time. During December 19, 2015~December 18, 2016, any Taiwanese tourist who holds a used ticket of Tze-Chiang Express (with a fare of over NTD 150, such as: Taipei->South Toucheng or Taipei->South Hsinchu) may exchange it for a Asakusa-Tokyo Skytree two-way ticket of souvenir edition (with a fare of 290-Yen, one for one) for free at the foreign tourism center of Asakusa station under Tobu Railway, or purchase a tourist two-way ticket specially for TRA at the preferential fare of 1500-Yen (original fare of 2910-Yen). Any Japanese tourist who holds the Tokyo Skytree tourist pass or Tokyo Skytree rail pass, may exchange it for a Pingxi-Shen'ao one-day pass at Taipei station or Ruifang station under TRA.

X Book Stations

Until 2015, TRA has set up 42 book stations, including: Qidu, Wudu, Xizhi, Xike, Nanganga, Songshan, Taipei, Banqiao, FuChou, Shulin, Shanjia, Yingge, Taoyuan, Zhongli, Xinfeng, Hukou, Hsinchu, Hexing, Neiwan, Zhudong, Zhunan, Miaoli, Fengyuan, Taichung, Xinwuri, Dajia, Qingshui, Shalu, Changhua, Yuanlin, Douliu, Chiayi, Tainan, Xinzuoing, Kaohsiung, Pingtung, Hualien, Taitung, Shuangxi, Runfang, Yilan, and Luodong. It doesn't only work on duplicating the facilities to other stations, but also encourages its employees to donate books actively. Besides serving the people's transportation needs, the said stations are able to touch people's lives with books.

XI National Level Crossings Safety Advocacy Platform

To expand the level crossings safety advocacy effect, TRA and the National Road Safety Committee of MOTC held a ceremony to start the 2015 national level crossings safety week in 1F Auditorium at 10:00 am, November 17, 2015, and set up the National Level Crossings Safety Advocacy Platform. It invited the Directorate General of Highways, Railway Police Bureau, the representatives of the Road Transportation Safety Supervision Conference from 6 main cities and Road Transportation Safety Joint Conference from each city and county to sign on the activity that values level crossings safety. Railway and road safety are maintained through cross department cooperation. Moreover, a press release was conducted to strengthen the advocacy effect and to make people more aware of transportation safety and respect for life. In addition, DM and poster were created, which are distributed to the road safety supervision conference of each city and county, as well as the supervising institutions in order to support the advocacy.



Signing ceremony of the National Level Crossings Safety Advocacy Platform at the launching ceremony of the 2015 National Level Crossings Safety Week on November 17, 2015

XII Digital Audio-Video Learning Platform "Rail Tube"

(I) With various trainings and initiatives, the uploaded audio-video files are viewed for nearly 10,000 times. Currently, there are a total of 139 videos uploaded to the Audio-Video Area of the TRA's Rail Tube, with an average length of 10~15 minutes. The files were viewed for 9,892 times (Until August 1, 2015)

(II) Conducts "Rail Tube Short Clip Competition" continuously (Do better, conduct competition activities continuously)

To promote digital teaching tools continuously, encourage the employees to engage in continuous learning, and promote knowledge cultivation, TRA made the 2014 Rail Tube Short Clip Competition Activity Implementation Plan last November 5, 2014. The competition is divided into 2 categories and 5 groups, namely, technical sharing category (Transportation group, Construction group, Rolling Stock group, and Electrical Engineering group), law advocacy category (Business & Legal Affairs group), which organize the primary selection. A total of 73 candidate works were selected in the competition, and 3 works were selected for the finals. In the final selection, the Director General appointed internal and external reviewers to set up a selection committee, which finally selected the top three 3 works and 3 excellent works. The final results were announced on the 305th TRA Conference on June 26, 2015, which were awarded and complimented by the Director General publicly. The short clips that won awards were played in the conference, so as to recognize the devotion of employees in making videos and knowledge sharing.

XIII Railway Ethics Advocacy Actions

During the railway festival last June 9, 2015, TRA's Civil Service Ethics Office and Catering Service Department selected "Yilan-Flavor Bento (Cherry Duck)", which integrates the folk story, "Half-Duck Magistrate", to promote the "Honesty Bento". This delivers the civil service ethics information to the daily life of the ordinary people. During June 9~August 31 of the same year, TRA selected 15 stations to conduct the civil service ethics advocacy activity of stamp collection. It conducts advocacy on civil service ethics for the people any time from multiple aspects in an open way. Moreover, TRA posted the information related to civil service ethics on the fan page of "TRA Ethics" in order to promote the cause.

XIV Enterprise Integrity Forum

During August. 4~18, 2015, TRA conducted an enterprise integrity forum, inviting 168 participants including the Director of the Civil Service Ethics Department, and the managers and employees of the related departments under TRA, as well as the representatives or senior managers from 47 manufacturers. Wherein, Xing Taizhao, the Chief Prosecutor of the Prosecutors Office, Hualien Branch Court, Taiwan High Court, and Prosecutor Fan Zhenzhong, the Director of the Prosecutors Office, Taoyuan District Court, Taiwan, were invited to make speeches. In addition, the forum invited Luo Zhongcheng, the lawyer of Zhongyi Law Firm and Chen Liqiang, the specialist of the Procurement & Storage Department under TRA. Moreover, the manufacturers were invited to exchange ideas on the issues and practices related to the procurement reform for better communication and understanding between private and public sectors.

XV Administrative Transparency Forum

Based on the topic of the TRA Train Purchasing and Renewal Plan (2015-2024), the forum was hosted by the Director General in person in TRA on June 24, 2015. A total of 60 senior managers from 38 representative manufacturers of the railway related industries were registered for participation. About 127 persons attended the forum, including TRA managers at level I and some representatives from administrative and judicial institutions, such as Lin Guoyuan, the Chief Secretary of MOTC, Chen Youjia, the Chief of the Planning Department of the Public Construction Commission, Executive Yuan, Yang Shijin, the Deputy Director of the Agency against Corruption, Ministry of Justice, and Liao Xingzhong, the Deputy Executive Officer of Transparency International (TI) Chinese Taipei. During the ideas exchange, the manufacturers actively proposed 9 points in terms of "how to maintain procurement equality", "administrative transparency" and "public information". This forum allowed the participants to have a correct understanding on the related procurement cases of TRA, and increased the trust of the manufacturers at home and abroad in TRA. This can achieve administrative transparency and highlight the honest image of TRA.

XVI Communication Forum on Civil Service Ethics Platform

Based on the topic of “Hualien-Taitung double track (including the driving safety bottleneck project)”, the forum is jointly organized by Hualien Transportation Depot of TRA and the East Engineering Office of the Railway Reconstruction Bureau on November 16, 2015. The forum is attended by the Director General in person. Also among those invited were the Ministry of Transportation and Communication, Agency against Corruption, Chinese Institute of Industrial Engineers, Deputy Director Wu of the Railway Reconstruction Bureau, Lin Jincun, the Chief Prosecutor of the Prosecutors Office of Hualien District Court, Huang Hecun, the Chief Prosecutor of the Prosecutors Office of Taitung District Court, as well as some experts and scholars. Moreover, the related employees and the manufacturers involved in the said plan attended the forum, bringing the total to 127 participants. The participants proposed 6 discussion topics, including “lack of work supervision regulations”, “efficiency as a key factor to promoting honesty”, “managers doing business networking via communication software during off-duty hours”, “inspection the hidden part”. The participants also resolve problems encountered by the employees and manufacturers in practice with professional reply. In this way, TRA conducts full communication, carries out dynamic management and improves the implementation performance.

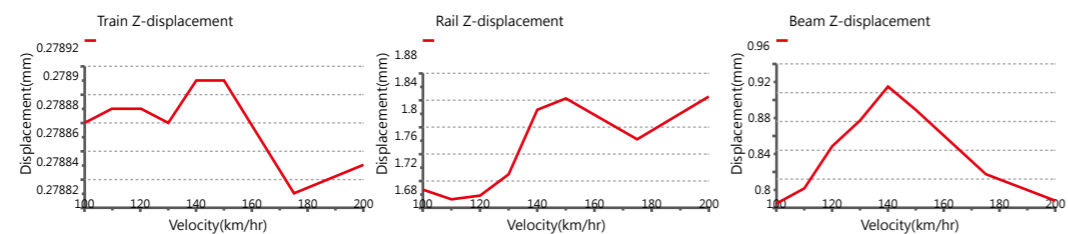
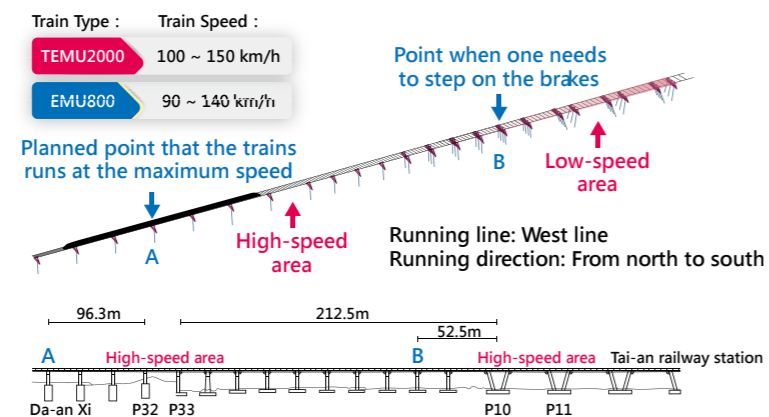
XVII Line Maintenance Innovation and Achievements

Mechanical analysis achievements of the trial run of the new tilting EMNU when passing through Tai-an Viaduct and steel rail

As Puyuma Express purchased by TRA can increase the speed to 150km/h, mechanical analysis (the entrusted technical service work) of the trial run of the new tilting EMU when passing through Tai-an Viaduct and steel rail is conducted. The technical service project is entrusted to explore the relationship between TRA trains of different types, the rail and the bridge under different speed.

The service team installs monitors and conducts a trial run test on the field. As shown in the numeric simulation analysis results, it can be known that when the train speed is 110km/h~120km/h, the rail bridge system will generate minimum vibration. Moreover, when the train speed is 140km/h~150km/h, resonance may easily occur between the train, the rail and the bridge. However, the response of the bridge structure is still in the safe range. It provides valuable reference for TRA when setting the train running speed.

Speed of Trains in the Trial Run Case



(Note: When the speed of Puyuma Express is 140km/h~150km/h, resonance may easily occur between the train, the rail and the bridge. However, the response of the bridge structure is still in the safe range.)



XVII Line Maintenance Innovation and Achievements

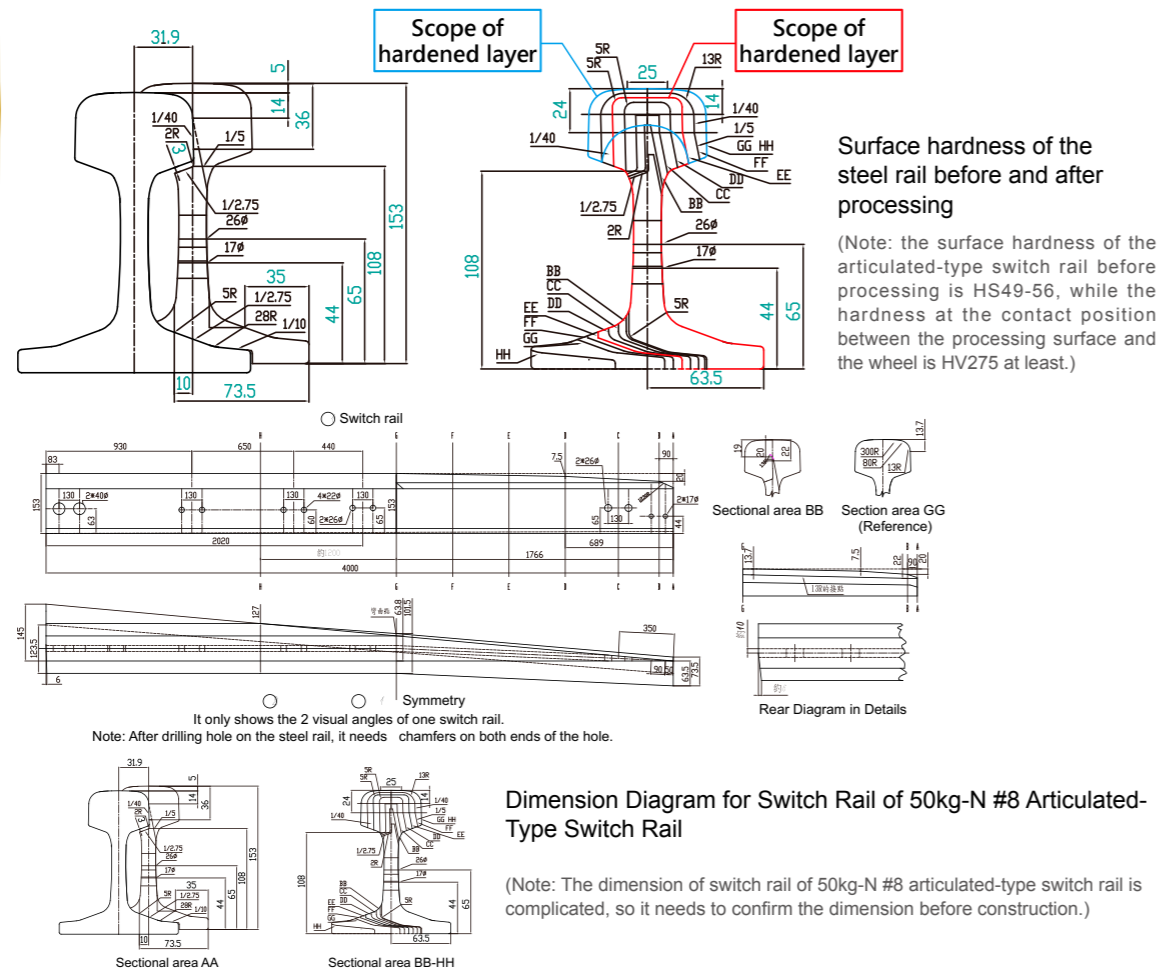
Switch rail of 50kg-N #8 articulated-type switch rail is made of head hardened rail

Currently, the shelf life of the switch rail on the railway is 8 years. Due to the fixed wheel base and the centrifugal force, the external wheel is pushed tightly against the switch rail when passing through the switching point of turnout, which will result in abrasion on the rail. In the meantime, the internal side of the steel rail is worn out, which is called partial abrasion. Moreover, the small sectional area of the switch rail will cause concentrated abrasion. Currently, the methods for improving abrasion on the switch rail include adding protection rail, applying oil on the head of the steel rail or using head hardened rail after heat treatment, which could achieve a fairly good effect.

There are 772 articulated-type switch rails along the lines under TRA, including 744 50kg-N #8 articulated-type switch rails. TRA's manufacturers are incapable of heat treatment for the processed steel rail, and TRA's demands are not huge, so investment in mold equipment can't achieve economic performance. Thus, it is infeasible to conduct heat treatment on the switch rail after processing. After internal discussion in TRA, a decision was reached to make the switch rail of #8 articulated-style switch rails with the head hardened rail after heat treatment. Compared with the rail made of common steel rail, this increases the hardness and the anti-abrasion ability. Moreover, it is technically feasible based on years of TRA's experience in making various switch rails.

The processing will be started after the dimension is confirmed. The supervisor leads the field workers to perform sawing, measurement, marking, drilling, planing, bending and grinding (Figure 1~Figure 6). During the processing, the supervisor will instruct the new recruits about the precautions, engineering methods and processing conditions. Besides finishing the task, technical skills are shared with the new team members.

It is estimated that the abrasion on the planing blade is increased by about 20%, which also increases the grinding time. We will consult the blade supplier to improve the blade material so as to meet our demands.



Planing of close-contact line

(Note: After the steel rail is fixed on the workbench, perform planing on the close-contact line)



Discussion of development team

(Note: The development team makes discussion to confirm processing procedure and method)



Finish planing on the wheel tread, wheel flange and close-contact line

無翻譯



Planing of foot

(Note: After the steel rail is fixed on the workbench, perform planing on the foot)



Finish (1)

(Note: The figure shows the dimension of the sectional area is consistent with that of the drawing.)



Finish (2)

(Note: Finally, perform painting and anti-rust treatment on the surface of switch rail)

After providing a static presentation of the project, TRA's Construction Department will specify the laying unit and request related departments to cooperate on the field laying, so as to test the functionality and durability, and make corresponding improvements.

The quantitative execution value of the study:

- (1) The head-hardened rail can extend the shelf life of the switch rail, so as to reduce the change in frequency, manpower and resources.
- (2) Once completed, it can be supplied to depots for laying. In case of emergency, it can be made and supplied immediately.
- (3) Reduce procurement cost: The team sets the switch rail for 50kg-N #8 articulated-type switch rail with hardened head, which totally saves cost in procurement.

Analysis on quantitative benefits:

- (4)
 - A Procurement bidding: 1 articulated-type steel rail with no hardened head costs NTD40,000.
 - B TRA Manufacturing: Cost of 50kg-N head-hardened steel rail NTD2,185/m* 4m/rail= NTD8,740.
 - C Manpower cost: 3 persons/day NTD1,000/5 days=NTD15,000. The total cost is NTD23,740. Cost effectiveness of single rail: NTD40,000-NTD23,740=NTD16,260. The shelf life of a head-hardened articulated-type switch rail is twice that of a normal articulated-type switch rail.

Conclusion: The cost saved by TRA for manufacturing all switch rails: 772 switch rails * cost effectiveness per rail NTD16,260 * twice the shelf life= NTD25,105,440

XVII Line Maintenance Innovation and Achievements

Manufacturing 50kg-N # DSS switch rail

DSS (Double Slip Switch) was installed in Tainan at the end of Taipei Stations' fourth platform in March, 2004. The switch rail uses JIS 70S steel rail, with a length of 19m in the middle part. The purpose of setting up a DSS is to significantly save space in the station and facilitate the train's line switch.

When the train is running due to the fixed wheel base and centrifugal force, the external wheel is pushed tightly against the switch rail, which causes rail abrasion. The inner section of the steel rail wears out. Moreover, the small cross-sectional area of the switch rail causes concentrated abrasion. Currently, the shelf life of a switch rail is 8 years. However, the abrasion may be concentrated due to the curve of the switch rail in the middle of the DSS and small cross-sectional area of the switch rail as stated above. In addition, the tonnage that passes through the DSS of Taipei station every year is about 2,135 tons. The switch rail should be changed every five years on average.

After the dimension and procedures are confirmed, the process begins. The supervisor leads the field workers to carry out tasks such as sawing, measuring, marking, drilling, planing, bending and grinding (Picture 1-Picture 29). During the process, the supervisor instructs new recruits regarding precautionary measures, engineering methods and processing conditions. Besides completing tasks, technical sharing is also supported.

(III)



DSS of Taipei Station



4 Mark the processing area on the rail web

Note: Mark the processing area on the rail web using a center punch and white marker.



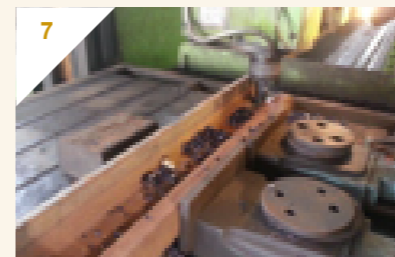
5 Extend the frame of miller

Note: The length of the steel rail exceeds that of the workbench, so a frame extension should be added.



6 Fix the processing work piece of the miller

Note: After the frame extension is set up, the steel rail may be installed on the workbench.



7 Milling operation of bolt with fixing slot

Note: The picture shows the milling operation of the bolt with fixing slot.



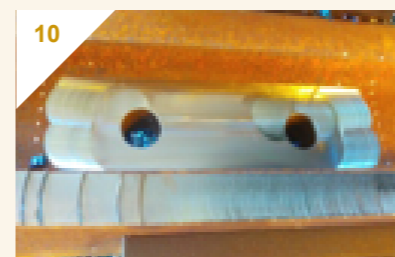
8 Milling operation of the tongue rail at the bottom of the rail

Note: The shape is complicated at the bottom of the rail, so processing by segment is required.



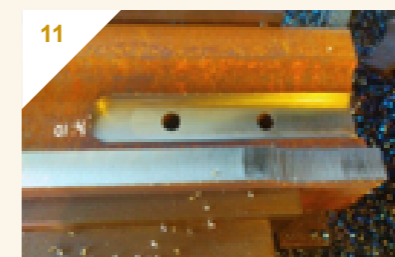
9 Milling operation of the elastic part

Note: It is mainly for removing the trapezoid section.



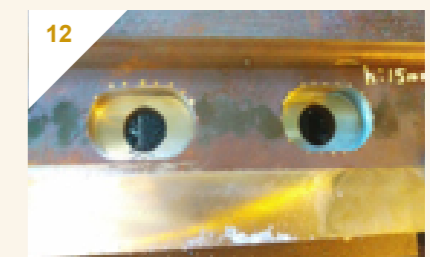
10 Milling operation on the junction surface of the connection board

Note: Perform milling operation followed by manual grinding.



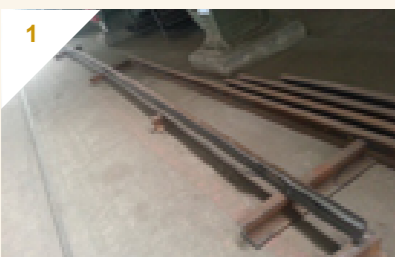
11 Milling is completed on the bolt with fixing slot

Note: Complete milling operation on the bolt with fixing slot.



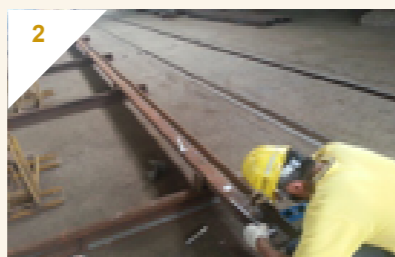
12 Milling operation on the long hole

Note: Complete milling operation on the long hole, with a depth of 15mm.



1 Disassemble the old unit from Taipei Station

Note: This may increase the judgment speed and accuracy with reference to the appearance and dimension of the old rail.



2 Mark the dimension

Note: Mark the surface of the steel rail using a slate pencil and caliper based on the dimension specified on the drawing.



3 Mark the processing area at the bottom

Note: Mark the processing area on the surface of the steel rail using a center punch and white marker.



13 Milling operation at the bottom of the rail

Note: During processing at the bottom, there should be some length allotted for clamping the workpiece when planning.



14 Milling operation of the tread

Note: Complete milling operation on the tread.



15 Frame is extended at the end when milling the tread

Note: The picture shows the frame extension at the end when milling the tread.

To be continued

XVII Line Maintenance Innovation and Achievements

Continued



16

Grinding operation on the junction surface of the connection board

Note: Perform manual grinding to complete processing on the junction surface of the connection board.



17

Dimension gauge for the cross-section

Note: Make a dimension gauge is for the cross-section of the switch rail to facilitate processing.



18

Mark the end surface using a dimension gauge

Note: Place the dimension gauge on the cross section to mark the processing shape of the cross-section of the steel rail quickly and correctly.



28

Perform planing on the wheel flange line

Note: Complete planing operation on the wheel flange line.



29

Photo of completed process

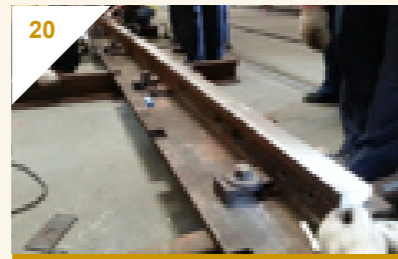
Note: All processing procedures are completed.



19

Development team discussion

Note: The development team holds a discussion to confirm processing procedures and methods.



20

Mark the close-contact line

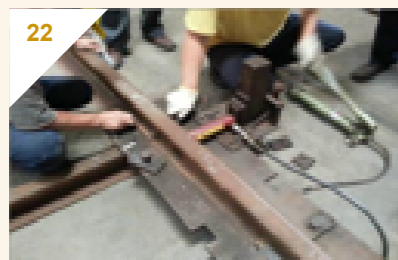
Note: Stretch the cotton cord on the tread, and mark the wheel flange line and position of the close-contact line.



21

Fix the deck

Note: After the dimension is confirmed, the steel rail may be installed on the deck of the planer.



22

Bend and press the rail on the deck

Note: Bend the steel rail according to the required curve at the end of the deck to facilitate planing.



23

Fix the point on the marked line of the tongue rail

Note: Stretch the cotton cord at the fixing point on the marked line of the tongue rail to confirm the dimension after bending the rail.



24

Bend the point on the marked line of the tongue rail

Note: Stretch the cotton cord at the bending point on the marked line of the tongue rail to confirm the dimension after bending the rail.



25

Position the close-contact line and the wheel flange line

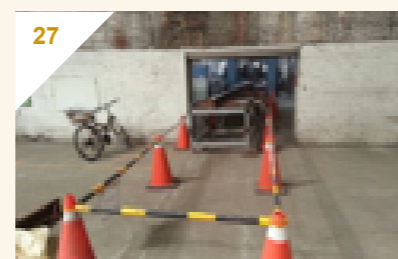
Note: Confirm whether the advance of the wheel flange line is consistent with the one specified on the drawing based on the position of the close-contact line and the wheel flange line.



26

Perform planing of the close-contact line

Note: If the marked dimension is correct, the steel rail may be installed on the workbench of the planer.



27

Add the guard rail at the end when planning

Note: Add the guard rail at the end of the workbench to ensure safety and protection.

DSS processing is quite complicated, so skill sharing is a critical issue. After a static presentation of the project is provided, field laying is performed so as to test the dimension, error and functionality. Improvements should be made in case of inconsistencies.

The quantitative execution value of the study:

- (1) Spare parts may be manufactured, so as to reduce potential running/stopping risks.
 - (2) Once completed, they can be supplied to the Taipei Station for laying. In case of emergency, they can be made and supplied immediately.
 - (3) Reduce procurement cost: Due to a small demand (i.e. there is only one DSS set in TRA), as well as the special characteristics and procurement of a single component, procurement is more difficult. If our team makes the switch rail in the middle of DSS, it could totally save costs in procurement, manpower and resources.
 - (4) The procurement value of 1 DSS set is about NTD9,200,000. The cost of purchasing a single steel rail in the middle part is about NTD400,000. A pair in the set costs about NTD800,000. Our team can make a single rail.
- Analysis on quantitative benefits:
- A Procurement and bidding: 1 DSS set NTD9,192,933/ 1 steel rail in the middle part NTD400,000.
 - (5) B TRA Manufacturing: 70S steel rail NTD2,450/M* 19M/rail= NTD46,550.
 - C Manpower: 3 persons/day NTD1,000/10 days=NTD30,000. The total cost is NTD76,550.
 - D Cost effectiveness of single rail: NTD400,000-NTD76,550=NTD323,450.

Conclusion: The cost saved by TRA for manufacturing 4 switch rails (2 sets): NTD1,293,800 (About NTD 1,290,000)

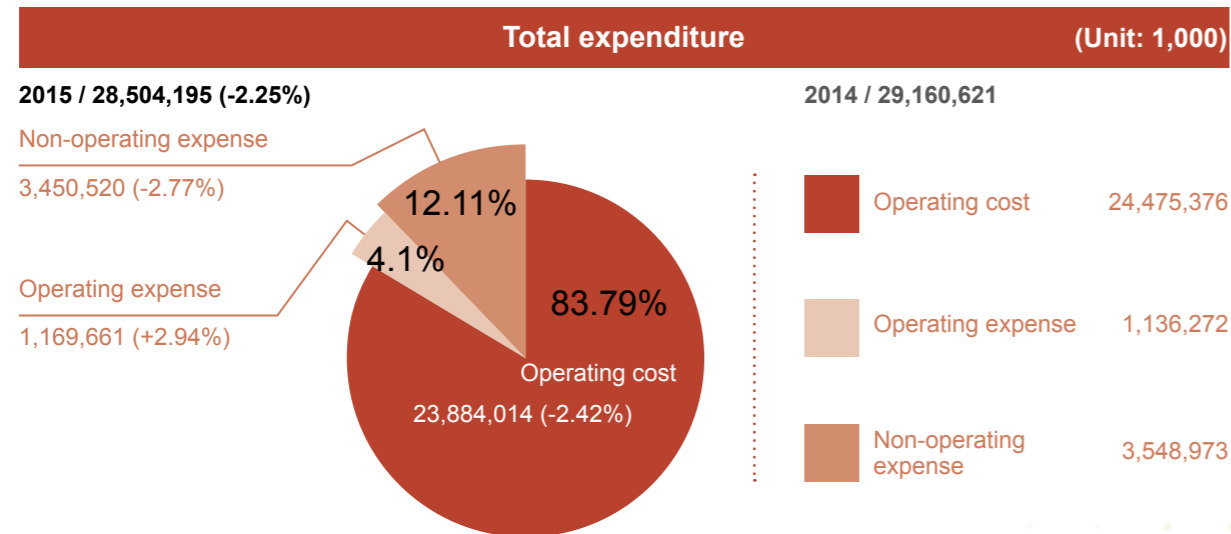
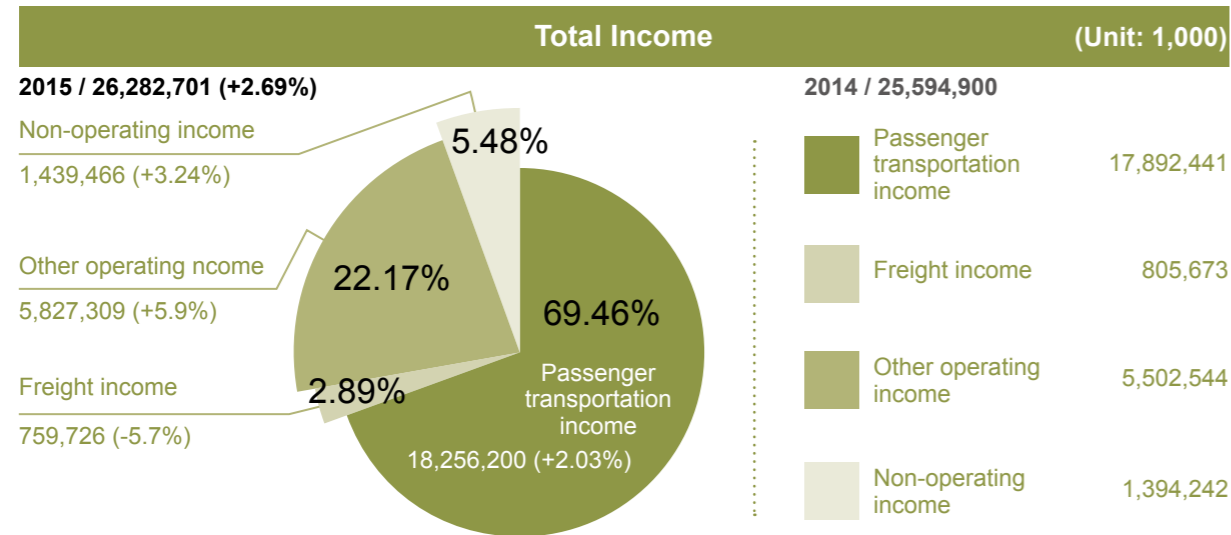
Operational Performance in 2015



- I. Profit/Loss Analysis
- II. Analysis on the Quantitative Value of Passenger Transportation /Freight
- III. Performance of Related Businesses

Profit/Loss Analysis

Comparison Chart of Profit/Loss in 2015 and 2014



Profit / loss (Unit: 1,000)	2015 / -2,221,494 (+37.7%)	2014 / -3,565,721
(The data in 2014 is the final audit report, while the data in 2015 is the final account report edited by TRA)		

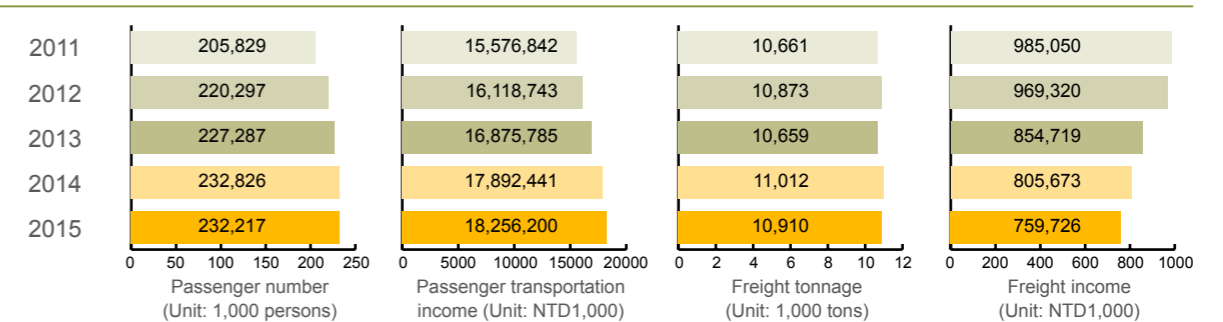
(I) The passenger transportation income in 2015 was NTD18,256,200,000, which increased by 2.03% compared to the previous year and reached its highest value. This is mainly attributable to the electrified Hualien-Taitung line that increased capacity in the east region since July 2014. As a result, both passenger number and income in the east region increased.

(II) The freight income in 2015 was NTD759,730,000, which decreased by 5.70% compared to the previous year. This is mainly due to the reduction in long-distance transport of sand and gravel, and increase in short-distance transport of limestone.

(III) The loss in 2015 was NTD2,221,490,000, which decreased by NTD1,344,230,000 compared to the previous year. This is mainly attributable to the passenger transportation income and income from disposal of real properties, plants and equipment, which increased by NTD 364,000,000 and NTD 274,000,000, respectively. Moreover, manpower cost as well as material and supplies cost were reduced by NTD225,000,000 and NTD 259,000,000, respectively.

Analysis on the Quantitative Value of Passenger Transportation and Freight

Passenger Transportation Data from 2011-2015



Passenger transportation capacity in each region of Taiwan



Data source: Transportation and Communications Monthly Statistics

The volume of passenger transportation in the regions of Taiwan reaches 2,280,000,000 passengers, of which TRA transports 230,000,000 passengers, accounting for 10.17%. In recent years, TRA has kept the percentage around 10%, and its capacity is 5 times of that of the High-Speed Railway.

III

Performance of Related Businesses

(I) Land Development Business Operations

To elevate operational performance, TRA in recent years, has actively promoted land development to expand its related businesses' operational performance by continuously promoting private participation in public construction, urban renewal and surface rights. This is expected to increase revenue and improve financial condition, so as to achieve sustainability in railway business operations.

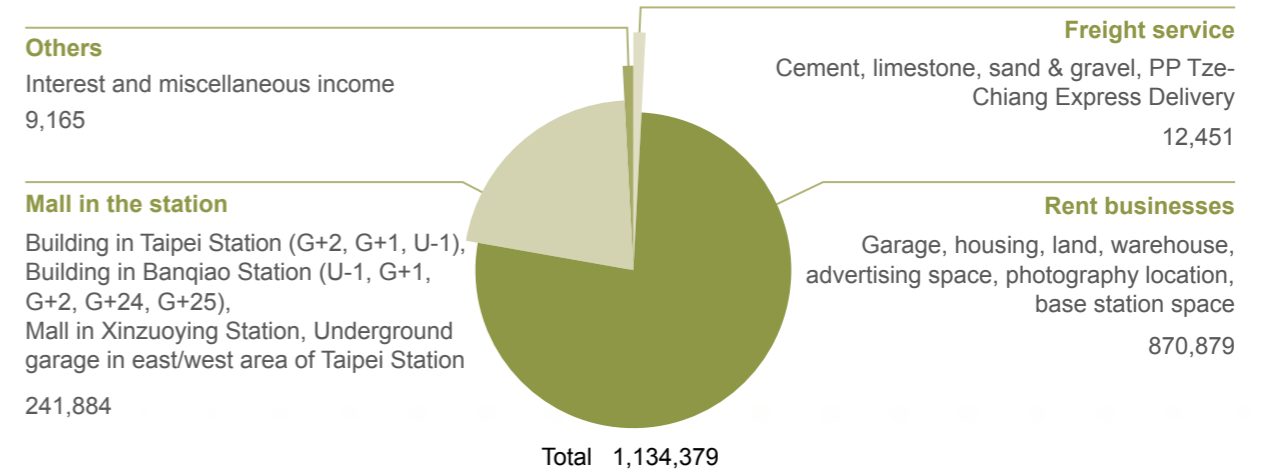
So far since the promotion of asset activation, TRA has achieved outstanding performance in the promotion of private participation in the public construction and in the land development by the means of surface rights setting. The total profits of land development reached NTD3,960,000,000 from the land development project of zone T-9 in Taipei Station that completed contract signing in December, 2004 to the successful sales of surface rights of the land in Fuhe Section, Zhongzheng District, Taipei City in November, 2015. Wherein, the operational performance related to land development in 2015 is more than NTD640,000,000, as detailed in the table below:

Land development means	Project name	Income in 2015 (Unit: NTD1,000)	
		Land rent	Royalty
Promoting private participation in public construction	BOT Project for Zone T-9 in Taipei Station	48,552	-
	BOT Project for Building in Nangang Station	15,982	60,000
	BOT Project for General Building and 3D Garage Building in Songshan Station	27,306	28,890
	BOT Project for Building in Wanhua (East and West) Building	24,889	-
Setting of Surface Rights	International Tourism Hotel and Construction Project for Special Zone (II) in Banqiao Station	11,738	7,802
	Setting of Surface Rights in Jingxiu Road, Yuanlin Township, Chuanghua County	324	-
	Setting of Surface Rights in Baoqing Section, Songshan District, Taipei City	2,959	-
	Setting of Surface Rights in Linyi Section, Zhongzheng District, Taipei City	1,805	409,861
	Setting in of Surface Rights in Fuhe Section, Zhongzheng District, Taipei City	-	523
Total		640,631	

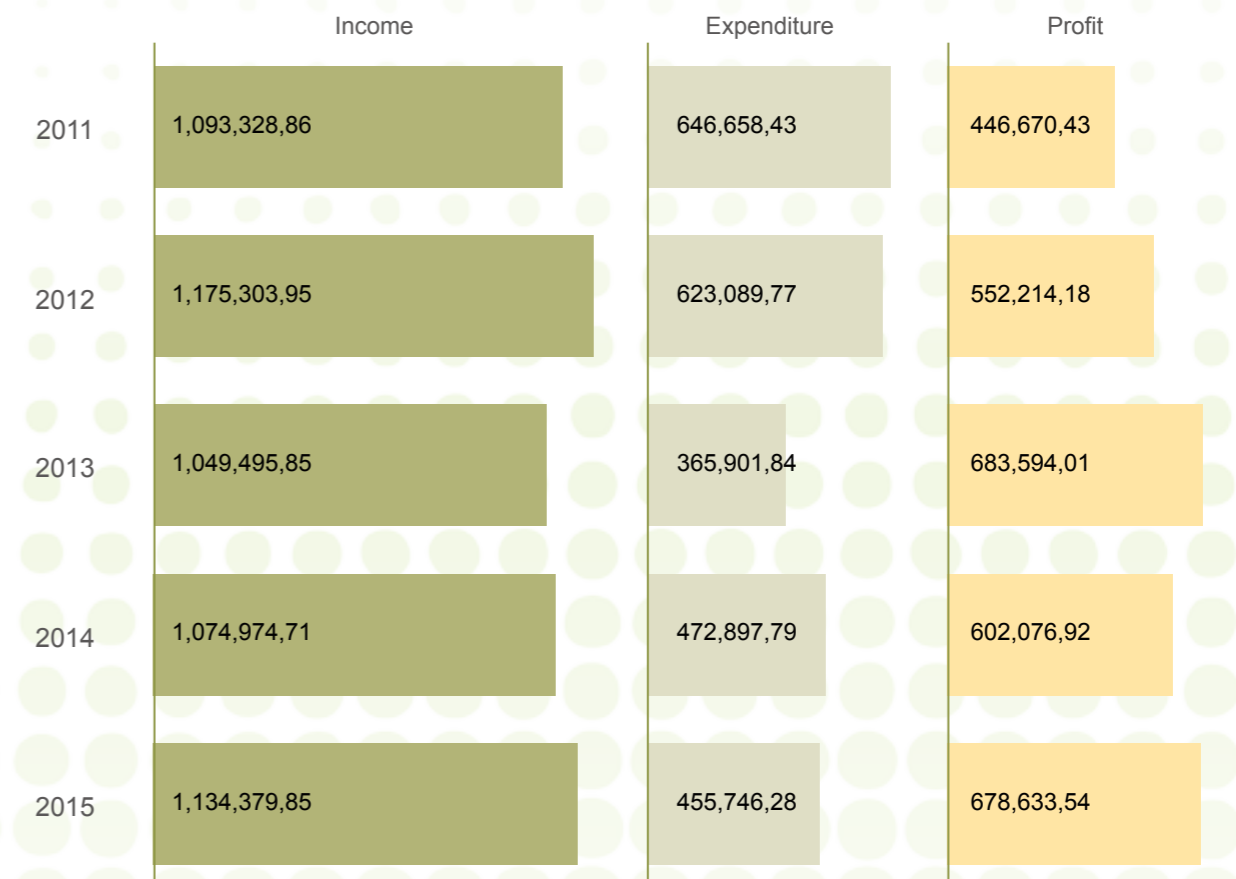
(II) Asset Activation

To activate assets and increase revenue effectively, TRA managed a series of asset activation businesses in 2015 such as PP Tze-Chiang Express Delivery, promotional project for a mall in the station, as well as rental of garage, housing, land, warehouse, advertising space, photography location, and base station space, which increased the total revenue by more than NTD 1,134,370,000.

Content and Income of Asset Activation Businesses (2015) (NTD1,000)



Income/Expenditure Statistics of Asset Activation Businesses in 2011-2015 (NTD1,000)



(III) Catering Service

The catering service is geared towards maintaining TRA bento sales and train service quality, developing tourism (promoting two-day-one-night cruise-style train), promoting advertising through seat covers, providing lunch box delivery service on the platform of the station, publishing the quarterly TRA News journal, promoting TRA's cultural volunteer service, developing railway commodities and trademark authorization, setting up a tourism desk, seeking investment for the operation of malls in the station, setting up self-service deposit boxes, and providing other service items for passengers. The total revenue in 2015 was NTD1,235,360,000, while the total expenditure was NTD588,761,000, and the profit was NTD 434,775,000.

	Income	Expenditure	Profit
2011	787,617	456,204	331,413
2012	856,735	504,318	352,417
2013	923,909	514,990	408,919
2014	926,071	519,336	406,735
2015	1,023,536	588,761	434,775

Unit: (NTD1,000)

1 Outstanding performance achieved through active expansion of the railway bento business

The sales volume of TRA's bento in 2015 was 9,978,208 (The daily sales volume was about 26,790 items on average), which increased by 1,100,490 items than that in 2014, reaching 12.68%. The income in 2015 was NTD 684,412,092, which increased by NTD90,967,268 than that in 2014, reaching 15.33%.

2 Sale of souvenir bento box sets during festivals

In 2015, TRA sold "Taiwan Railway Passing Down, and Family of 12 Generation Series" Generation-7 EMU1200 Souvenir Bento Box and Bag (7,800 sets) and Generation-8 E1000 Souvenir Bento Box and Bag (3,900 sets), and Hualien-Taitung Line Electrification Souvenir Bento Box and Bag (9,900 sets).



EMU1200 Souvenir Bento Box and Bag



E1000 Souvenir Bento Box and Bag



Hualien-Taitung Line Electrification Souvenir Bento Box and Bag

3 Active development of railway commodities and trademark authorization

It cooperated with an authorized manufacturer to develop railway commodities, and obtained royalties totaling NTD 3,264,771 in 2015, which increased by NTD1,316,724 than that in 2014, reaching 67.59%.

4 Maintaining train service quality

- (1) For onboard train service staff, training is conducted in advance, as well as inspection of appearance and attendance evaluation. Moreover, there is enhanced electronic service training for onboard train service staff (key point of training: improve onboard train service quality and government relations and policy advocacy). A training video is played 40 minutes before the onboard train service staff go on duty, so as to enhance service quality and improve TRA's image.
- (2) It enhances the etiquette and the service training of the onboard train service staff, so as to provide optimal and outstanding service.

5 Promoting railway tourism and providing inbound train service

Two-day-one-night (or longer) inbound service for cruise-style train was provided. A public bidding was organized for travel agencies to help promote railway travel routes. There were a total of 27 operational trains in 2015, with an average seat utilization rate of about 79.66%. These trains could transport 5,979 passengers and obtain an income of NTD8,059,712 (including fare, bento, royalties and commodities sold on train). Compared with that in 2014, the income increased by NTD1,364,556, reaching 20.38%.

6 Publication of the TRA News quarterly journal

The quarterly TRA News journal is published and placed in the seat pockets of Puyuma Express and Taroko Express for passengers to read. This aims to promote railway cultural tourism.

7 Promote TRA's cultural volunteer service

Starting from Taipei Station, cultural volunteers organize a series of activities like the "Taiwan Railway Camp" to introduce the history of Taiwan railway, train revolution and transportation safety. Moreover, they encourage interaction and hold activities related to railway culture, and assist TRA in creating news DVD and other data.

8 Setting a tourism service desk, and providing various tourism services

To develop the tourism business, TRA cooperates with tour operators to set tourism service desks in 5 places and 4 stations in Taipei, Banqiao, Chiayi and Hualien, providing various tourism services for passengers. A rental income of NTD 7,607,640 was generated in 2015.

9 Cooperation with local government to set up various information desks, so as to expand services in the station

In response to the Executive Yuan's plan of doubling tourist arrivals, TRA has provided a station rental service for county and city governments to set a tourism service center, tourism information service station, public information station and employment service desk, as well as smart guiding machine and military police service desk since 2014. The rental income generated in 2015 was NTD 969,552.

10 Seeking investment from reputable companies to establish mall operations in the station to improve station image

Uni-President, Hi-Life and McDonald were authorized to operate in the shopping mall of all stations. The income generated from operating fees was NTD 156,000,000 in 2015.

11 Development of commercial space in all stations to increase revenue

Rental service was provided in waiting rooms of all stations for private operators, postal offices, ATM machines, beverage dispensers, drinking water dispensers, photo booths, self-service deposit boxes and tourism service center, as well as short-term rentals. The rental income generated in 2015 was more than NTD140,050,000.

12 Short-term rentals in all stations

Institutions, schools, industrial & commercial groups can organize short-term activities at the station, with a total of 357 events held in 2015. The rental income generated in 2015 was NTD15,075,755.

To be continued

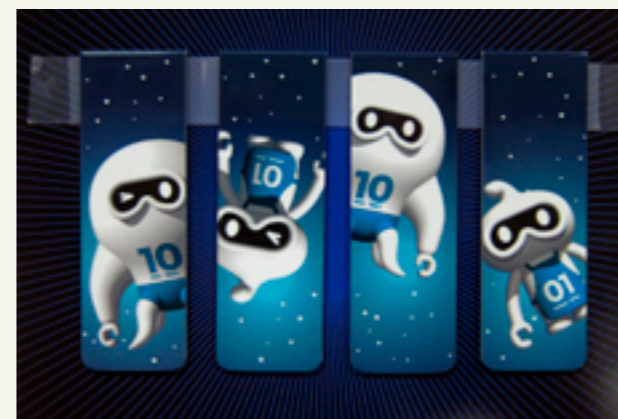
(III) Catering service

Continued

- 13 **Setting up self-service deposit boxes in stations**
To provide better service for passengers and increase revenue, self-service deposit boxes were set up in 34 stations including Keelung and Taipei. The rental income generated in 2015 was more than NTD721,788.
- 14 **Lunch box delivery service on the platform of stations**
To provide better service for passengers and increase revenue, a lunch box delivery service was set up on the platform of stations including Fulong and Guanshan. The rental income generated in 2015 was NTD2,018,508.
- 15 **Postal office rental service of the station**
To provide better service for passengers and increase revenue, a postal office rental service was provided in the Taipei station. The rental income generated in 2015 was NTD2,692,262.
- 16 **Advertising on seat covers to increase revenue**
In 2015, the income generated from advertising on seat covers in the Tze-Chiang Express (excluding Puyuma Express and Taroko Express), reached NTD761,000.
- 17 **Development of railway commodities related to the cultural creative industry with TRA-branded value**
- (1) A Special Festival was held during the 128th Anniversary of the Railway Festival to showcase and sell various railway products at a preferential price.
 - (2) Classic commodities were showcased at every festival. For example: Some peripheral products were presented based on TRA's Evolution 1001 Project. The "LOVE Pendant" was offered on Valentine's Day. In promoting the twin stations (Hsinchu and Tokyo) in Japan, souvenir products such as bronze badges of the Hsinchu station and the CT273 steam train, bamboo craft of Hsinchu station, engraved porcelain plate of the Hsinchu station and memorial card of the Hsinchu-Tokyo Station were showcased. On Children's Day, 2 metal bookmarks-CT273 steam train shape and ticket with auspicious words (Zhuifen-Chenggong(success) and Yongbao-An'kang (health)) were released. When the multi-pass e-ticket was made available in the central region and Yilan region under TRA, the 2015 happiness travel e-ticket souvenir card was issued. To celebrate the EMU800 train delivery, the EMU800-shaped key ring and EMU800 macaroon-shaped mobile phone strap were released. In the Formosa Railroad Bento Festival in 2015, the ink art metal name card case was presented. When the Summer Formosa Express started operations in 2015, the special souvenir commodity CT273 metal name card base was released. When Chaozhou Train Workshop became operational, the souvenir shopping bag was offered. To commemorate the Taipei and Osaka twin stations, the souvenir ticket package was presented. At the 125th anniversary of the Taipei station, souvenir peripherals were released. In other activities, the Taiwan railway tourism booklet was published. At the 90th anniversary of the Hualien-Taitung line opening, the monthly calendar and 2016 desk calendar souvenirs were released.



The first Formosa Railroad Bento Festival in 2015

128th anniversary souvenir porcelain plate

Evolution 1001 Peripheral Products

- (3) Railway commodities were sold in shops set by the Taiwan Railway Shop, and Onboard Train Service Department and restaurants. The sales volume was more than NTD24,000,000 in 2015.



Special promotion for the 128th anniversary of the Railway Festival

Business Operations



- I. Passenger Transportation and Freight Business
- II. Asset Activation Business
- III. Catering Business
- IV. Operations Management and Staff Training
- V. Asset Management and Development
- VI. 2015 TRA Disaster Prevention

Passenger Transportation and Freight Business

(I) Passenger transportation business

Regarding TRA's transportation business in 2015, after all EMU800 trains became operational, the capacity of local trains improved significantly in terms of passenger transport. Moreover, service quality was improved and activities advocating "Courtesy for the Disabled and Train Etiquette" were promoted, so as to provide high-quality travel environment for passengers. In terms of freight, contamination prevention facilities in public cargo were set up. Cargo owners were encouraged to make arrangements for trucks and rewarded for trucks that carry heavy loads on return routes. All these aim to promote the growth of the freight business.

Increase in service capacity

(1) 296 EMU800 trains are operational, so as to improve local train capacity

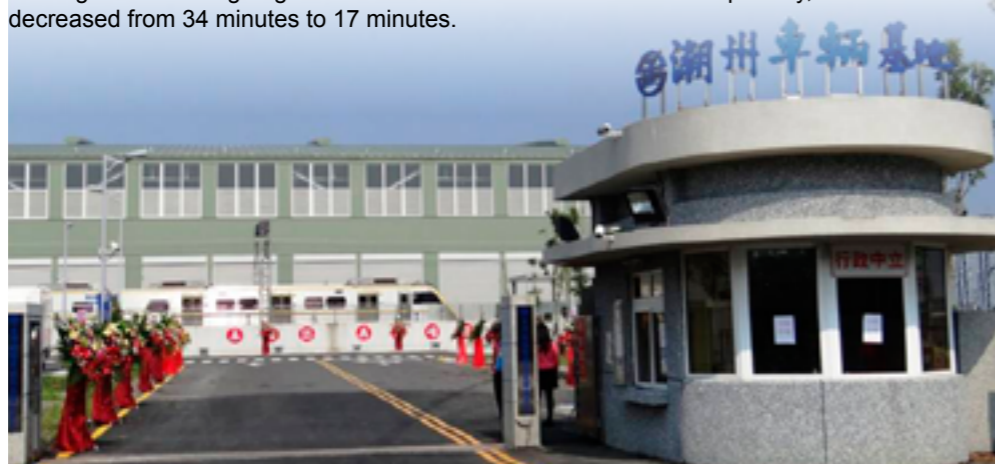
The 296 new EMU800 trains have been operational since June. The capacity of local trains increased by 7% in the northern region, 47% in the central region, 18% in the southern region and 17% in the eastern region, which increased by 25% in the overall line. This facilitates commuting and communication in the urban areas.



296 EMU800 trains have been operational since June.

(2) The electrified double track Pingtung-Chaozhou railway line and Chaozhou workshop was put into operation to increase the trains between Pingtung and Chaozhou

The TRA has adopted a railway electrification system between Kaohsiung and Chaozhou, so as to shorten local trains' travel time by 10 minutes. Moreover, some trains from the west line have extended travel time from Pingtung to Chaozhou, so the number of trains running between Pingtung and Chaozhou increased from 60 to 118 per day, and the interval decreased from 34 minutes to 17 minutes.



Electrified double track Pingtung-Chaozhou railway line and Chaozhou workshop was put into operation

2 Improve punctuality rate

The punctuality rate of TRA's passenger trains was 93.61% in 2015, which decreased by 0.58% compared to that in 2014 (94.19%). TRA's highest priority is the safety of train and passenger before undertaking efforts to maintain punctuality and improving transportation service quality.

3 Develop international railway tourism business

In recent years, the number of tourists in Taiwan and Japan has hit record highs with tourism flourishing day by day. TRA has signed cooperation agreements with Japanese railway companies. Moreover, it has strengthened communication, cooperation and coordination in other fields aside from the railway business, to create a win-win outcome. TRA had cooperated with 12 Japanese railway companies from 2012 to 2015.

4 Improve service quality

(1) TRA's train courtesy campaign is aimed at providing better guidance and service for passengers at the station and onboard by advocating "Courtesy for the Disabled and Proper Train Etiquette" as the main objective. Passengers are also urged to maintain a high-quality travel environment for everyone. TRA has also initiated phase I of the "Platform Queuing Area Planning Program" in some stations and branch lines in the southern region since September, 2013. The queuing area beside the platform is where the train stops, allowing passengers to line up when waiting for the train. By the end of December, 2015, the queuing area had been set up in 39 stations including Badu, Qidu, Xizhi, Nangang, Songshan, Taipei, Banqiao, Shulin, Yingge, Hsinchu, Liujia, Zhudong, Zhuzhong, Neiwan, Yuanquan, Zhuoshui, Longquan, Jiji, Shuili, Checheng, Zhunan, Miaoli, Changhua, Yuanlin, Douliu, Chiayi, Xinying, Tainan, Gangshan, Xinzuoing, Kaohsiung, Shalun, Chang Jung Christian University, Zhongzhou, Chaozhou, Shifen, Pingxi, Su'aoxin, and Ruifang. In the future, the program will be implemented in other stations, so as to maintain order in public trains.

(2) Improve the functions of accessible facilities in stations

Elevators were gradually set up and installation was completed in 112 stations in 2015, which covered about 88.07% of passengers under the TRA.

(3) Provide free timetable

To keep passengers updated with train time adjustments since October 15, 2015, TRA has printed 500,000 timetable flyers and 100,000 handbooks, which were placed at the stations since October 14 and offered to passengers for free.

(II) Freight business

1 Pollution prevention facilities were set up in public cargo areas, in compliance with the Prevention and Control of Environmental Pollution Act. In 2015, pollution prevention facilities were set up in the public cargo areas of Heping station and Heren station.

2 In line with the Suhua Highway Mountainous Section Improvement Project along Provincial Highway No. 9 under the Directorate General of Highways, TRA has operated additional cargo trains to transport residual soil with 9 pairs of trains running both ways on average every day. The transportation capacity was about 960,000 tons in 2015, which increased by about 16% (830,000 tons) compared to the previous year (2014).

3 Cargo owners were urged to prepare trucks and reward trucks that carry heavy load on the way back, so as to reduce the turnover period of trucks, increase capacity and improve operational performance. In 2015, the average turnover period per truck was around 1.3 days, which decreased by about 7% compared to (1.39 days) the previous year (2014).

II

Asset Activation Business

(I) Station Mall OT/ROT

Assets are activated based on related regulations stipulated in the Act for Promotion of Private Participation in Public Infrastructure Projects. TRA plans to attract private investments and ideas that would transform the station into a business center, providing comprehensive travel service. The station will also become an ideal place for personal and commercial opportunities. Due to changes in the overall environment and amendments in certain laws, there is a need to adjust operating strategies, as well as develop and expand the market, so as to increase ancillary revenue annually. By the end of 2015, 5 projects officially started operations; namely, a building in Taipei station (G+2, G+1, U-1), building in Banqiao Station (U-1, G+1, G+2, G+24, G+25), mall in Xinzuoing Station, underground parking lot in the eastern/western sections of Taipei Station and underground parking lot in Banqiao station. In addition, a mall in Nangang station opened on July 27, 2016 as planned. The total royalties are expected to reach NTD241,880,000.

As TRA renovated and newly built some stations successively this year, to utilize the commercial space effectively, TRA conducted investment promotion briefing and reviving manufacturer opinion sharing on November 3 and December 22, 2015, which attracted a total of 32 and 20 manufacturers respectively. During the activity, TRA conducted communication with the operators, so as to understand the market conditions, requirements and the feasible of supplementary facilities, so as to plan the most appropriate investment seeking method.



Mall ROT-Taipei Station (Christmas Tree Lighting)



New Railway Economic Investment Briefing



(II) Provide an innovative land rental system that encourages youth entrepreneurship and cultural & creative industries

By promoting "Youth Entrepreneurship: Building Success in one's Hometown" and "Taiwan Cultural & Creative Industry", the government encourages young people to start businesses in their hometowns and urges outstanding individuals to invest in Taiwan's cultural and creative industry, so as to promote local industry characteristics. In view of this, the TRA has leased public sector real estate for youth entrepreneurship or cultural & creative industry purposes, to help promote employment, develop the local economy, and improve Taiwan's cultural & creative industry. By the end of 2015, a total of 21 projects were signed and notarized.



Youth Entrepreneurship and Cultural & Creative Projects



Bike Supply Station in Guanshan Station

(III) Transform warehouse and cultural assets into sightseeing destinations that promote cultural & creative industries

To effectively manage and utilize its cultural assets (relics, historical architecture and ancient buildings), TRA cooperates with the government in managing operations. It has renovated exhibition sites that support artistic creativity as well as promoted new artistic and cultural landmarks that people can visit. In 2015, 129 sites were leased, and the rental income reached more than NTD 69,130,000.



Warehouse No. 5-Chiayi Railway Art Village

(IV) House & Land rental system

House and land scouting is done in areas surrounding the stations to determine properties that are available for rent. Based on the overall plans and principles in line with the original purpose, idle areas, houses, premises, offices, lands, garages, etc. are developed. By the end of 2015, a total of 690 property rentals including houses, lands and offices were completed, generating a rental income of NTD378,670,000. The agreement template was also revised at the end of 2015. In the future, there will be fewer restrictions on laws governing usage and advertising, so as to guarantee the lessee's right of usage.



Underground parking lot in Banqiao station

(V) Lease of advertising space in the station

The area is maximized by leasing advertising space without hampering station operations or train safety, or damaging architectural structure. There are visual or painted images on the train/passenger car while advertising graphics, lightboxes, displays and multi-media advertisements can be seen inside and outside the station. In 2015, the rental income reached more than NTD 95,000,000.



Advertising rent-Painted train

(VI) Photography location and rental of facilities

In line with the government's efforts to promote the cultural industry, improve TRA's image, and utilize its related assets, the TRA has leased areas and facilities for photography, TV drama, movie, documentary and advertising purposes. In 2015, there were a total of 66 projects, with a generated rental income of more than NTD1,760,000.

(VII) Base station space rental

For convenient travel, improving communication quality and coordinating with the government in terms of telecom liberalization, the TRA has actively set up more base stations along the railway line and opened stations, houses and land to telecom operators so they can set up mobile phone base stations provided that train safety and communication quality are not affected. In 2015, the rental income reached more than NTD13,640,000.

III

Catering Business

The catering service system is aimed at expanding TRA bento sales, maintaining train service quality, developing tourism (with two-day-one-night cruise-style train promotion), promoting with seat-cover advertising, providing lunch box delivery service on the platform of the station, publishing the TRA News quarterly journal, promoting TRA's cultural volunteer service, developing railway commodities and trademark authorization, setting up tourism desks, seeking investments for mall operations in the station, installing self-service deposit boxes, and offering other service items to passengers.

Operations Management and Staff Training

IV

(I) Continuously uphold operational performance and accountability

1 Establish an operational performance and accountability system that evaluates achievements and financial improvements

To effectively evaluate operational accountability, as directed by the MOTC, the TRA has classified property loss into attributable loss and non-attributable loss. Attributable loss includes normal loss (such as loss of service line and small stations), while non-attributable loss includes loss not attributable to the current operator such as pension fund under the old system, interest of liabilities and half-fares for the elderly and disabled, so as to evaluate the operator's annual operational accountability. Moreover, the TRA has been urged to implement cost-cutting measures. The operational performance and accountability system has been established to evaluate achievements and financial improvements.

2 Achievements

In recent years, improvement measures have had preliminary achievements. The daily income of passenger transportation increased from NTD 39,890,000 in 2007 to NTD 50,020,000 in 2015 on average, with a growth rate of 25.4%. Moreover, the daily number of passengers increased from 465,000 in 2007 to 636,000 in 2015, with a growth rate of 36.8%. Despite the challenges, TRA has increased its main business' operational efficiency significantly in the past seven years. In addition, TRA's loss in 2015 was NTD 2,221,000,000, which decreased by NTD 1,345,000,000 compared to that in 2014 (NTD3,566,000,000).

(II) Conduct a public opinion poll on the latest market trend, promoting a "passenger-oriented" operation philosophy

A TRA passenger opinion poll was conducted in 2015 to find out people's opinion and satisfaction towards TRA's services, items to be improved, the overall satisfaction rating and suggestions, which could serve as reference for reviewing service performance and applying corrective action. This could also improve the overall service quality and enhance market competitiveness effectively.

(III) Statistics of procurement business

A total of 1,101 procurement contracts were completed in 2015, including 519 in engineering, 355 in labor and 227 in finance, with procurement amount reaching NTD 14,973,070,000. The list of procured products and services include 48 air conditioners for EMU800 commuter trains, 24 diesel shunting locomotives, 10 trains with Alishan Express coaches, and coaches without steps. There were also the 6-Year Train Safety Improvement Project, Babaochuan Bridge I Renovation Project, Turnkey Project after the Taipei Station Roof Renewal Project, Anti-collapse Frame Construction Project in the Northern End of Sandiaoling along the Yilan Line, maintenance of host facilities in line with the Performance Improvement Project for Online Booking and Ticketing System in 2016-2019, the Niupuxi Bridge Renovation Project consisting of measurement, drilling, planning & design, and construction parts.

(IV) Add more procurement-related regulations to improve procurement performance

1 Expand approval/authorization according to the supervision threshold but minimize threshold for large procurement

To improve procurement efficiency, the TRA announced on June 11, 2015 to expand approval/authorization for change in contract and base price based on supervision, but lessen the threshold for large procurement. As required by regulations, after a contract is changed and accounts are adjusted, the Deputy Director is authorized to approve the contract if the increased account or the accumulated amount has reached the supervision threshold. If the increased account or accumulated amount reaches 50% of the supervision threshold but less than the supervision threshold itself, the Chief Secretary or Chief Engineer is authorized to approve the contract. If the increased account or the accumulated amount is less than 50% of the supervision threshold and doesn't have any change in the contract price, a Level I manager is authorized to approve the contract.

2 Authorize a proxy to approve the entire contract's base price

To facilitate smooth management of its procurement business, the TRA has to authorize a designated proxy to approve the entire contract's base price in case the person-in-charge is on leave or on a business trip since October 27, 2015.

(V) Conduct in-service staff training to enhance professional competency

1 From April to September, 2015, a basic training for professional procurement personnel was conducted four times with 233 participants. It was aimed at enhancing professional competency among employees.

2 From April to August, 2015, a forum was organized 20 times for procurement personnel in each region with 622 participants. The two-way exchange gathered 151 proposals (23 types) from each department to improve measures and share ideas that enhance the practical experience of procurement personnel.



Procurement forum organized in Changhua



Proposal analysis and suggestions for improvement after the procurement forum

3 To check whether the professional materials management personnel in each department were adequate, and if the materials management regulations were carried out in practice, the TRA's Material Management & Inspection Team conducted a random audit of 4 available units in advance (from July -August, 2015). Based on the investigation, the units were organized according to the auxiliary account for managing items on hand and actions were taken in relation to materials management regulations.



Position management carried out in warehouse management



Material labeling card applied in warehouse management



Outdoor material stored in areas and installed with a signboard(1)



Outdoor material stored in areas and installed with a signboard(2)

(VI) HR Business

2015 Consensus Camp for Senior Managers

1 From December 25 to 26, 2015, the 2015 Consensus Camp for Senior Managers was held at the Civil Service Development Institute of the Directorate-General of the Personnel Administration, Executive Yuan. The camp invited Zhang Shanzheng, Deputy Director of the Executive Yuan, and Lin Wentsan, Director of the Civil Service Development Institute as speakers. With creating a vision as the theme, the World Café Discussion conducted a team building course that offered various training techniques. There were a total of 33 trainees who were TRA Level I managers.



Photo of Zhang Shanzheng, Deputy Director of the Executive Yuan, and Lin Wentsan, Director of the Civil Service Development Institute after the lecture



World Café Discussion



World Café Agreements



Group discussion related to the team building course

In-service staff training

- 2 (1) On June 11, 2015, TRA head office conducted in-service training for employees. It invited Guan Zhengzhe, committee member of the National Police Administration, Ministry of the Interior as speaker with a talk entitled, "Broken Windows Theory and Mass Transportation Safety".
- (2) On June 24, 2015, TRA head office conducted in-service training for employees. It invited Liu Peiling, Director of the Center of Innovation and Synergy for Intelligent Home and Living Technology, National Taiwan University as speaker with a talk entitled, "Must-Know Design Innovations for Future Enterprises".
- (3) On June 24, 2015, TRA head office conducted in-service training for employees. It invited Pan Yufeng, deputy professor from the Department of Special Education, Taiwan Normal University as speaker with a talk entitled, "Thinking about Innovation and Originality".



Lecture by Guan Zhengzhe, committee member of the National Police Administration, Ministry of Interior



Lecture by Liu Peiling, Director of the Center of Innovation and Synergy for Intelligent Home and Living Technology, National Taiwan University



Lecture by Pan Yufeng, deputy professor from the Department of Special Education, Taiwan Normal University

(VI) HR Business

Nomocracy education

- (1) On January 28, 2015, TRA head office invited Tsai Zhiru, Deputy Director of the Department of Legal Affairs, Mainland Affairs Council, the Executive Yuan as speaker with a talk entitled, "Cross-Strait Communication and Precautions for Traveling to Taiwan".
- (2) On April 15, 2015, TRA head office invited Yan Zhihao, Leader of the Task Force of the Department of Civil Service Ethics, MOTC as speaker with a talk entitled, "Introduction to Civil Service Regulation and Practical Cases".
- (3) On May 13, 2015, TRA head office invited Li Lihui, Supervisor of the Taiwan Women's Center as speaker with a talk entitled, "Nomocracy Education-Marriage and Family under Gender Mainstreaming".
- (4) On April 15, 2015, TRA head office invited Li Junsheng, Director of Civil Service Protection & Training Commission as speaker with a talk entitled, "2015 Instructional Activity for Civil Service Protection".
- (5) On September 24, 2015, TRA head office invited Zhu Chaoliang, prosecutor from the Prosecutors Office, Supreme Court as speaker with a talk entitled, "Seeking Benefits and Serving People".
- (6) On October 6, 2015, TRA head office invited Chen Zunyuan, professor from the Department of Public Administration, National Chengchi University Court as speaker with a talk entitled, "Civil Service Ethics: Theory and Practice".
- (7) On December 15, 2015, TRA's head office invited Chen Zunyuan, professor from the Department of Public Administration, National Chengchi University Court as speaker with a talk entitled, "Neutral Administration".



Lecture by Tsai Zhiru, Deputy Director of the Department of Legal Affairs, Mainland Affairs Council, Executive Yuan



Li Lihui, Supervisor of the Taiwan Women's Center



Yan Zhihao, Leader of the Task Force of the Department of Civil Service Ethics, MOTC



Staff participation during the "2015 Instructional Activity for Civil Service Protection"



Lecture by Zhu Chaoliang, prosecutor from the Prosecutors Office, Supreme Court



Lecture by Chen Zunyuan, professor from the Department of Public Administration, National Chengchi University



Health lectures

- (1) On March 9, 2015, TRA head office invited Zhang Mingwei, the psychologist from the Department of Psychiatry, Far Eastern Memorial Hospital as the speaker with a talk entitled, "Stress Relief and Mood Management".
- (2) On May 26, 2015, TRA head office invited Tsai Huaxing, the Director of the Health Education Department, Kang Ning General Hospital as speaker with a talk entitled, "Prevention of Office Syndrome- Relaxing Massage, Liver and Kidney Disease & Colorectal Cancer Prevention , Health Care and Self-Check".
- (3) On November 13, 2015, TRA head office invited Chen Meiren, the lecturer from the Life Rescue Education Center, R.O.C. as the speaker with a talk entitled, "Self-Care, Stress Relief without Distress".



Lecture by Zhang Mingwei, psychologist from the Department of Psychiatry, Far Eastern Memorial Hospital



Lecture by Tsai Huaxing, Director of the Health Education Department, Kang Ning General Hospital



Lecture by Chen Meiren, instructor from the Life Rescue Education Center, R.O.C.

2015 Instructional Activity for Civil Service Protection

On May 6, 2015, the 2015 Instructional Activity for the Civil Service Protection Business was held at Meeting Room 5 of the TRA building. Director Li Junsheng and Section Chief Wang Qihua of the Civil Service Protection & Training Commission were invited as instructors. Through group discussions and case studies, the protection business implemented by TRA employees was tackled. The 72 participants consisted of business personnel from TRA Level 1 units, affiliated and branch institutions.



Lecture by Director Li Junsheng and Section Chief Wang Qihua of the Civil Service Protection & Training Commission



Participation of personnel from TRA Level I units, affiliated and branch institutions

Awards presentation ceremony for 2015 model civil servants

The awards presentation ceremony for 2015 model civil servants of the MOTC was held at the 5F hall on June 9, 2015 (Tuesday) at 2:00 pm, hosted by Chen Jianyu, Director of the MOTC. During the ceremony, a total of 36 model civil servants were recognized, including 4 from TRA; namely, Gao Mingyun, Deputy Chief Engineer; Zheng Peiqi, Director; Huang Hongyang, Chief Engineer & Depot Director; and Jiang Mingzhi, technical assistant. They were present to receive their awards.



Photo of Director Chen Jianyu and TRA's model civil servants

(VI) HR Business

Singles activity

7

In line with the government's policy to increase birth rates in Taiwan, singles activities are organized to help employees interact and communicate with each other. They also encourage single employees to expand their social network, and provide more opportunities for single men and women to meet and talk, so as to create a harmonious and happy relationship. These activities are expected to promote marriage and increase birth rates. In response to the MOTC project, TRA organized the 3rd singles activity entitled, "The Princess' Journey to the Garden of Dreams" held at the central region on Aug. 1, 2015, with a total of 34 participants. Through activity of indigo dyeing and rubbing, participants had the opportunity to get to know each other and find potential partners. Participants were also asked to fill out a satisfaction and Mr./Ms. Right survey. The event concluded with a group photo of all participants, a perfect ending for a fun singles activity.



Registration of participants



Interactive game



Indigo dyeing and rubbing activity for participants to get to know each other



Photo of all participants

2015 TRA Softball Director-General Cup

8

From August 19-20, 2015, the 2015 Softball Director-General Cup was held at the TRA to encourage employees to do physical exercises, engage in normal leisure activities and enhance teamwork. There were 15 teams and 283 players who competed and demonstrated their strong camaraderie and cooperation. The tournament ended with the following teams taking the top four positions; namely, Hualien's Wenkang team, Taitung's Wenkang team, Chiayi's Wenkang team and Taichung's Wenkang team. Thanks to the cooperation and efforts of all employees and personnel, the championship game was held successfully. The activity allowed employees to demonstrate their slow-pitch and softball skills, as well as share and learn from other players.



Director-General's opening address



Culture Recreation & Art Team from 15 regions line up during the opening ceremony

Parental bonding activity

9

Departments were required to organize the 2015 parental bonding activity at the end of August, 2015, in line with the Executive Yuan's theme "teaching happiness" to promote parental bonding. Various activities were arranged to help employees strengthen parental interaction, so as to further enhance parental bonding and promote family harmony. About 2,000 employees and their families participated in the activity, which had outstanding results.



Photo taken in front of the Yilan Railway Station during the 2015 parental bonding activity organized by the Yilan Transportation Depot and Construction Depot



Visiting the Railway Engineering Education Center during the 2015 parental bonding activity organized by the Kaohsiung Transportation Depot



Visiting the driving simulator during the 2015 parental bonding activity organized by the Taipei Power Depot



Visiting the power maintenance lorry during the 2015 parental bonding activity organized by the Tainan Power Depot

(VII) Professional manpower training**Training mission and task**

- (1) To provide safe and accurate railway transportation service for the public, as well as expand its scope of operations, TRA has actively cultivated professional talents to ensure sustainable operation and development. The Employee Training Center offers core technology training and management knowledge training focused on in-service employees, and also provides orientation for new recruits.
- 1 (2) To improve construction quality and management performance, the Employee Training Center was accredited by the Executive Yuan's Public Construction Commission as a training institution that offers Public Construction Quality and Management Training Course in 2009. The training course is aimed at developing quality control competencies among TRA engineers to prevent construction defects and improve the quality of public construction. Qualified trainees are given a qualification certificate issued by the Public Construction Commission. By the end of 2015, training was provided for 539 participants, of whom 515 qualified and the qualification rate reached 96%.

Opening of classes in 2015

The Employee Training Center opened a total of 141 classes in 2015, with 6,124 participants and 45,579 man-days, which are detailed below:

(1) Railway competency training

A total of 27 classes were opened, with 1,343 participants and 25,953 man-days, including: Transportation Class, Locomotive Operator's Class, Driver's Class, Transfer Class, Conductor's Class, Train Inspection Class, Rolling Stock Operations Instructor's Class, Railway Construction Maintenance Lorry Driver's Class, Railway Construction Maintenance Lorry Commander's Class, Construction Maintenance Lorry Driver's Class (In-service Training), Construction Maintenance Lorry Commander's Class (In-service Training Class), Line Practice Class, Signaling Technology Basics Class, Locomotive Maintenance Lorry Driver's Class, Telecom Technology Basics Class, etc.

(2) Administration competency training

A total of 15 classes were opened, with 530 participants and 2,446 man-days, including: Public Construction and Quality Management Class (In-service Training), Transportation Study, Briefing Skills Class, Service Perception Class, Value Engineering Class, etc.

(3) Occupational safety and knowledge training

A total of 18 classes were opened, with 1,216 participants and 2,262 man-days, including: First-Aider's Safety and Health Training, Risk Management Class, In-service Training for Labor Safety Personnel, Safety and Health Training for Field Operations Manager, Zero-Disaster & Danger, Disaster Identification & Anticipation Workshop, Safety and Health Training for Class-3 Occupational Safety and Health Affairs Manager, Safety and Health Training for Class-1 Occupational Safety and Health Affairs Manager, etc.

(4) Training of newly qualified recruits based on a special examination

A total of 36 classes were opened, with 1,552 participants and 10,015 man-days, including Basic Railway Course for Newly Qualified Recruits based on the Special Examination held in 2014 and 2015 (conducted by TRA), Competency Training (conducted by the department), and Field Operations Training (conducted by the depot).

(5) HR and civil service ethics training

A total of 13 classes were opened, with 536 participants and 616 man-days, including: Gender Mainstreaming and Sexual Harassment Prevention Class and HR Information Management System Course (webhr training). A Learning Consensus Camp was also organized along with a Civil Service Lecture on Ethics and Training.

(6) Ancillary operations and management training

A total of 3 classes were opened, with 138 participants and 373 man-days, including: Contract Execution Management for Rental and Participation Promotion Contracts, State-owned Property Management, Activation and Utilization Class

(7) Procurement competency training

A total of 4 classes were opened, with 234 participants and 3,276 man-days, including: Procurement Personnel Basic Training

(8) Other classes or trainings

2 A total of 25 classes were opened, with 575 participants and 638 man-days, including: Railway Union Training, Occupational Safety and Health Auditor Training, Train Driver Scheduling Forum, In-service Forum for Drivers, Training before TRA MMIS Test and Trial Run, etc.



Safety and Health Training for Class-3 Occupational Safety and Health Affairs Manager



Practical drilling course in First-Aider's Safety and Health Training



First-aid training for newly qualified recruits who were selected based on a special examination (transportation) in 2015

V Asset Management and Development

To cope with environmental changes while capitalizing on both transportation construction and asset development, and maximizing the benefits of public construction, the TRA has coordinated with the government's railway construction plan. The Executive Yuan's project is to accelerate urban renewal and development plans initiated by the local government, and to undertake various development projects through different mechanisms such as asset development and operation of related businesses based on the Act for the Promotion of Private Participation in Public Infrastructure Project, the Urban Renewal Act and State-owned Property Law.

Besides the signing of agreements, TRA continuously promoted the following initiatives in 2015: 2 for private participation in public construction, 7 for urban renewal and planning, 32 in coordinating with unsolicited proposal for urban renewal and 4 in setting up the surface rights. Moreover, to facilitate land asset activation and management, 14 cases of pre-leading, planning and evaluation were undertaken for related assets, and these are as follows:



(I)

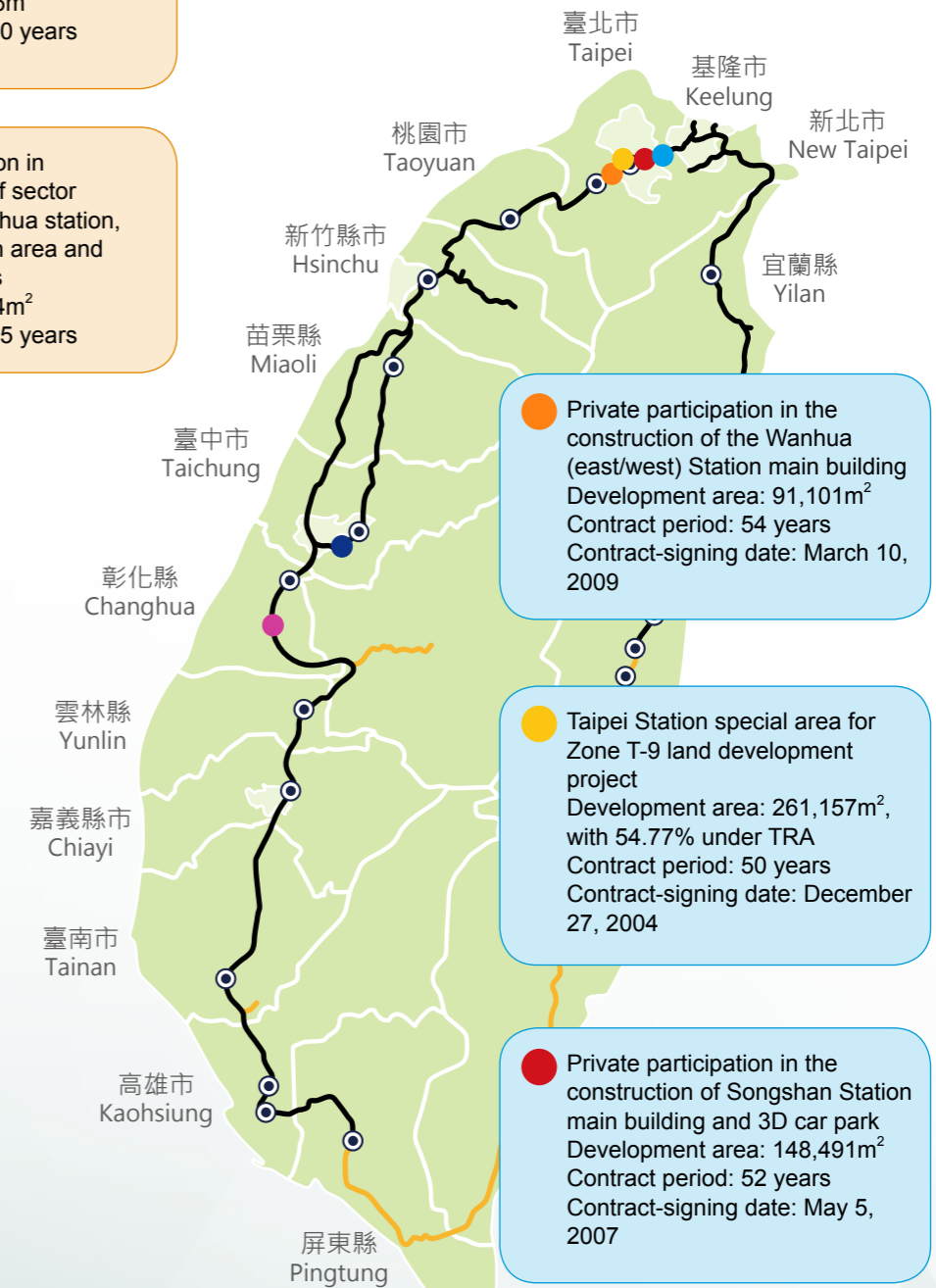
Promote private participation in public construction

● Construction project in the culture zone of TRA's Taichung railway station
Base area: 29,766m²
Contract period: 50 years

● Private participation in the construction of sector garages in Changhua station, relics preservation area and surrounding areas
Base area: 18,874m²
Contract period: 15 years

Signed contracts

Contracts under discussion



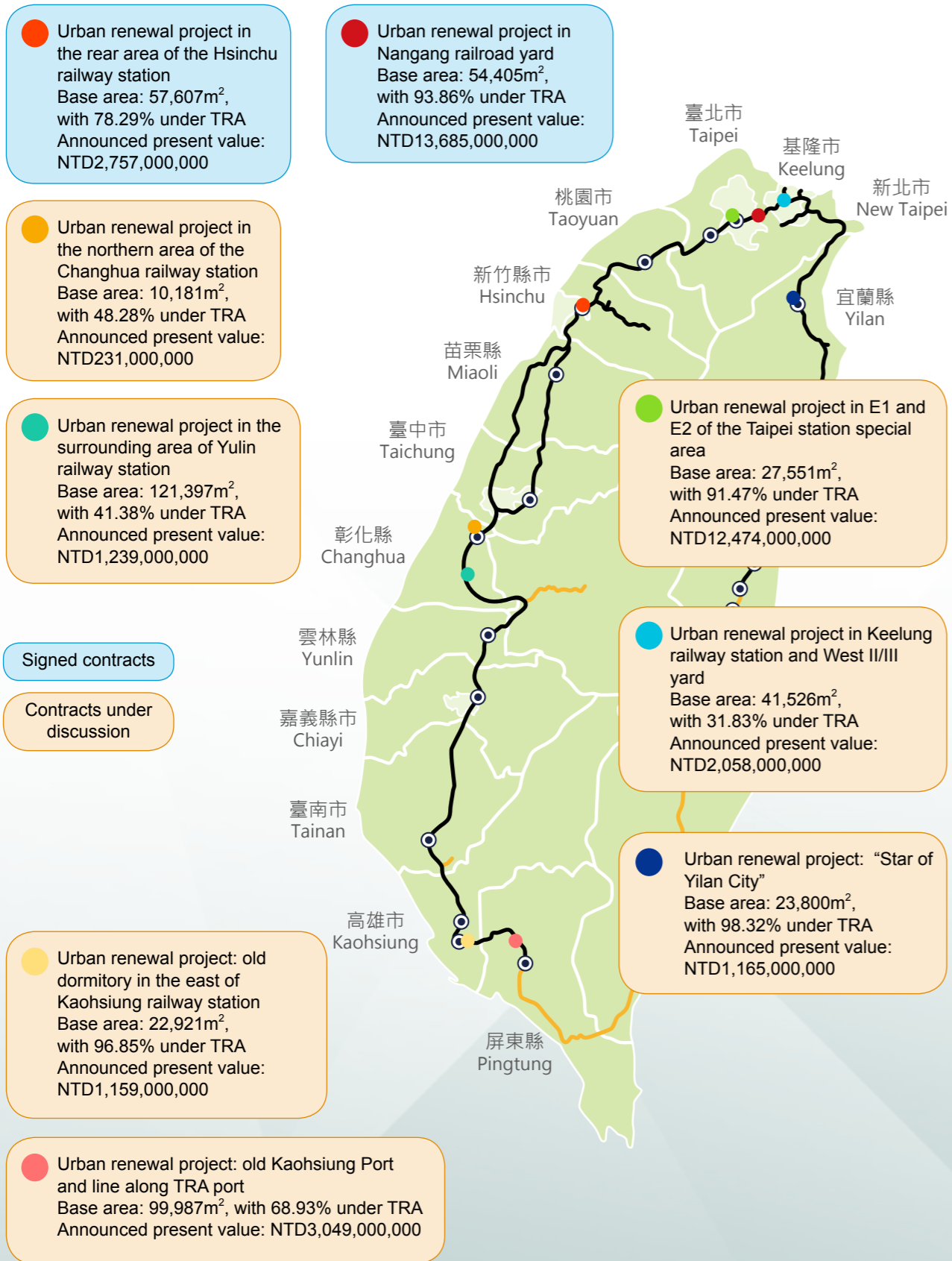
● Private participation in the construction of the Wanhua (east/west) Station main building
Development area: 91,101m²
Contract period: 54 years
Contract-signing date: March 10, 2009

● Taipei Station special area for Zone T-9 land development project
Development area: 261,157m², with 54.77% under TRA
Contract period: 50 years
Contract-signing date: December 27, 2004

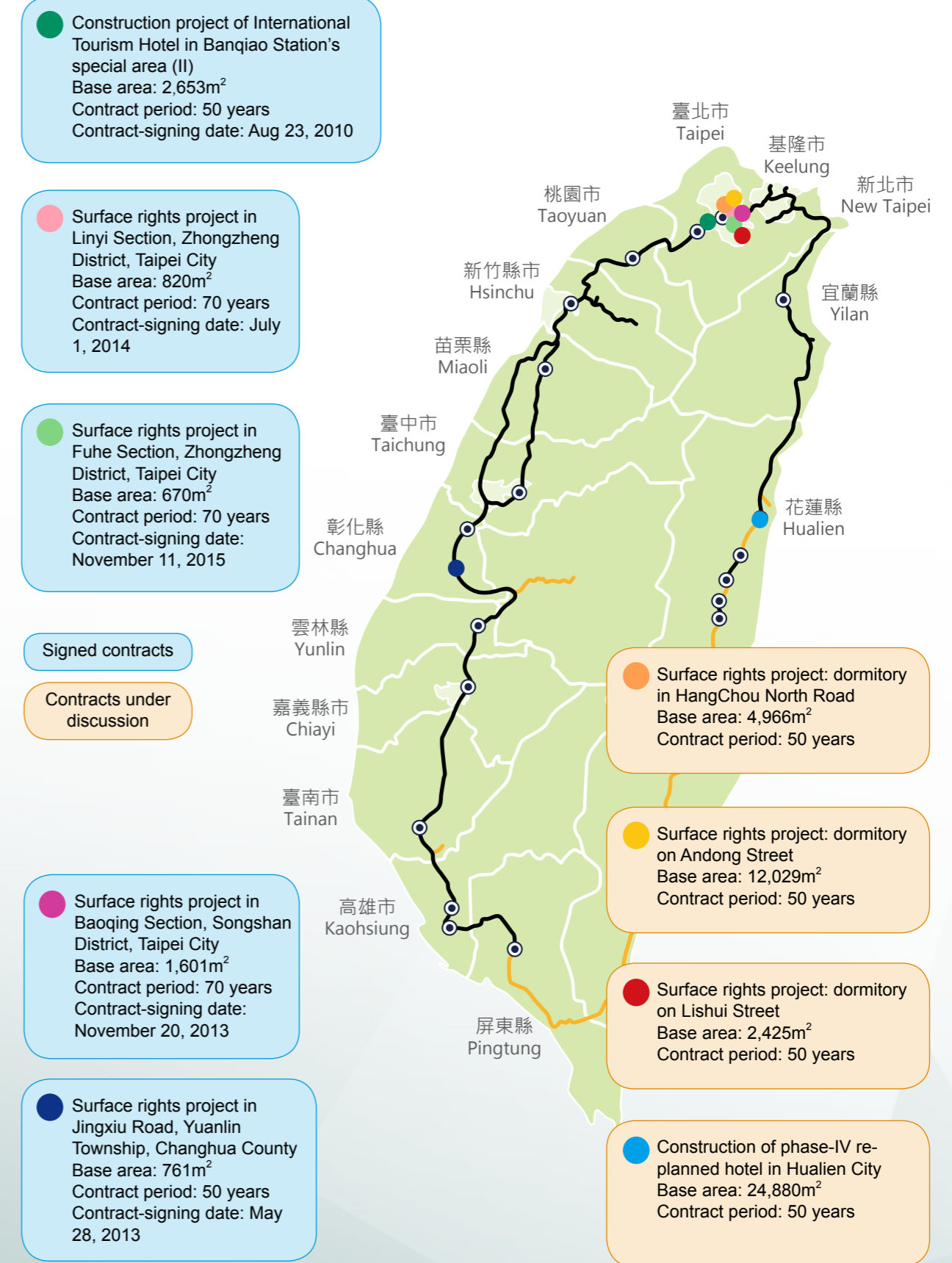
● Private participation in the construction of Songshan Station main building and 3D car park
Development area: 148,491m²
Contract period: 52 years
Contract-signing date: May 5, 2007

● Construction of the Nangang Station main building
Development area: 196,263m²
Contract period: 50 years
Contract-signing date: December 11, 2006

(II) Urban renewal construction (government project)



(III) Setting up the surface rights



VI TRA Disaster Prevention Efforts in 2015

With the drastic effects of climate change globally in recent years, natural disasters such as earthquakes, typhoons, heavy rain and mudslides have occurred more frequently, causing massive damage to the entire island. More extreme and severe weather events are expected in the future. Therefore, outdated disaster prevention measures, strategies and actions should be seriously reviewed and updated. The enemy should be anticipated by maintaining an aggressive defense, making advanced deployment, pre-allocating manpower and preventing disaster any time based on strategies and principles that give more importance to prevention than rescue, and emphasize the value of evacuation over prevention. Moreover, disaster prevention and rescue methods should be adjusted based on the severity of disaster. During ordinary days, departments must conduct advanced evaluation and analysis on various disaster conditions and implement necessary preventive actions and measures. In case of unexpected disaster, there should be minimal loss and recovery time for train operations by conducting safety drills and taking responsive actions during ordinary days.



(I) Conduct railway safety drill for “Mobilization, Disaster Prevention and Anti-terrorism”

In 2015, 5 TRA joint mobilization offices conducted large-scale and comprehensive emergency response and rescue (recovery) drills 5 times in preparation for potential railway disasters, with 802 participants mobilized. In addition, the Alishan Forest Railway Management Department organized a practical drill in Beimen station on May 26, 2015, which covered emergency operations such as train derailment, as well as tunnel mudslide response and rescue (recovery), with 112 participants mobilized. On July 23, 2015, TRA's Railway Maintenance Team conducted a “disaster prevention drill at the TRA building”, which included practical evacuation and disaster prevention exercises held on the upper floors above the 2F, with a total of 807 participants.

No.	Unit	Date	Drill Location
1	Railway Maintenance Team	July 23, 2015	TRA Building
2	Taipei Joint Mobilization Office	May 08, 2015	Keelung station
3	Taichung Joint Mobilization Office	October 23, 2015	Changhua station
4	Kaohsiung Joint Mobilization Office	July 09, 2015	Pingtung station
5	Yilan Joint Mobilization Office	May 15, 2015	Su'ao station
6	Hualien Joint Mobilization Office	May 21, 2015	Hualien station
7	Alishan Forest Railway Management Department	May 26, 2015	Beimen station



An emergency drill was conducted by the Taipei Joint Mobilization Office on July 23, 2015, in coordination with the Taipei City Fire Department.



The TRA fire rescue team held a safety drill on the field, as part of the activity conducted by the Taipei Joint Mobilization Office on July 23, 2015.



Station explosion prevention drill as part of the railway safety drill in Taipei on May 08, 2015



Train explosion prevention drill as part of the central region's railway safety drill on October 23, 2015



88-ton crane repair drill as part of the central region's railway safety drill on October 23, 2015



Train derailment recovery drill as part of the railway safety drill in Kaohsiung on July 9, 2015



Train derailment recovery drill as part of the railway safety drill in Yilan on May 15, 2015



Train explosion prevention drill as part of the railway safety drill in Hualien on May 21, 2015



Train fire rescue drill as part of the railway safety drill in Hualien on May 21, 2015



Line construction recovery drill as part of the railway safety drill in Alishan forest railway on May 26, 2015



Train recovery drill as part of the railway safety drill in Alishan forest railway on May 26, 2015

(II) Preparation for disaster prevention during flood season

Based on the principle of "passenger safety, train safety and railway safety", TRA has started flood prevention efforts in March when flood season begins. Response teams have conducted disaster prevention campaigns, and performed inspections based on the Flood Prevention Checklist. Moreover, a flood prevention drill has been organized based on the emergency response plan. In April, response teams in all regions have formed a random inspection unit to supervise flood prevention activities in the department under the jurisdiction of each region. In the head office, the Transportation Department, Construction Department, Rolling Stock Department, Electrical Engineering Department and Security Corps comprising the joint supervision unit have supervised and evaluated flood prevention preparations of each response team.

Currently, TRA has completed the customization of the quantitative precipitation estimation and segregation using multiple sensors (QPESUMS), which is promoted for use at the general response center. The system is customized for TRA by the Central Weather Bureau based on the rainfall warning sites in key sections, bridges and depots. It provides real-time rainfall monitoring with data being updated every 10 minutes, and can serve as reference for determining water level and rainfall pre-alarm value, warning and threshold value in order that proper action may be taken at the target sites. This is a customized disaster prevention and computer-aided decision-making system. The Construction Department sorts out the data reported from each depot including the pre-alarm value, warning and threshold value, which are submitted to the Central Weather Bureau for rolling modification every quarter.

(III) Auxiliary Military Service Corps Training

TRA held the 2015 auxiliary military service corps training. According to the Annual Military Service Corps Training Guidelines, training is provided for the auxiliary military service corps together with the Reserve Command of NMD, which consists of 2 independent regional corps and 54 participants.

- 1 On July 20, 2015, the Hualien Construction Depot held the 2015 military service corps training No. Z921101.
- 2 On September 15, 2015, the Taipei Construction Depot held the 2015 military service corps training No. Z931102.



Registration procedures for participants



Registration of participants



Participants join the steel rail change construction and recovery training



Participants in the ramp recovery training



Participants in the railway sleeper change training



(IV) Routine training for Civilian Vigilance

This aims to enhance civilian defense knowledge, understand civilian defense, and improve operational functions of civilian vigilance, so as to establish a system for disaster prevention and rescue, anti-terrorism, self-defense and self-rescue during ordinary days, as well as practice national defense mobilization. To effectively provide support for the military service corps in times of wars and to ensure homeland security, TRA has organized training for Civilian Vigilance 7 times in 2015, with 1,017 participants.

No.	Unit	Date
1	Railway Maintenance Team	July 23, 2015
2	Taipei Joint Mobilization Office	June 16, 2015
3	Taichung Joint Mobilization Office	June 15, 2015
4	Kaohsiung Joint Mobilization Office	June 30, 2015
5	Yilan Joint Mobilization Office	June 25, 2015
6	Hualien Joint Mobilization Office	July 7, 2015
7	Alishan Forest Railway Management Department	July 17, 2015



Major Construction and Investment Projects



- I. Interisland Railway System Safety Enhancement Plan
- II. Elevation Construction Program in Taoyuan following the MRT Construction in Urban Areas
- III. Construction/Maintenance Project
- IV. Electrical Engineering Maintenance Project
- V. Train Procurement, Renewal and Renovation Project
- VI. Special Projects

I Interisland Railway System Safety Enhancement Plan

(I) Content of the Project

The plan was approved based on the No. 0980008163 document released by the Executive Yuan on February 27, 2009. With NTD 14,949,000,000 funding, the plan was undertaken from January 1, 2009 to December 31, 2012. The main contents of the project are as follows:

- 1 Renewed the station architecture and service facilities: Constructed a cross-style station in four stations including Shanjia station, Hukou station, Zhubei station and Shalu station; added commuter trains between north Hsinchu and Rende, and an elevated line on the third rail between Wudu and Xizhi to expand capacity.
- 2 Improved infrastructure such as bridges and tunnels: Repaired high-risk and fragile segments, inspected bridges along the railway line, enhanced vibration-resistance and extended infrastructure durability, restored the Dajia River Bridge pier; renovated the Zengwen River Bridge, Yanshui River Bridge, and Ercengxing River Bridge; reinforced old tunnels along the Jiji line and restored tunnels along the Beihui line.
- 3 Improved reliability of stations and lines: Used the 50kg/m long rail for 121.2km and changed the UIC-60kg steel rail for 11.1km.
- 4 Improved reliability of locomotive facilities: Installed a remote camera monitoring system at 421 level crossings, changed the 49.5mm² locomotive messenger wire between Keelung and Zhunan to 95mm², updated the locomotive system, expanded transformer capacity and renewed switches of the converter station.

(II) Implementation achievements

Infrastructure such as bridges and tunnels underwent improvements in 2015:

Reconstruction of the South Taimali Stream Bridge

Reconstruction of the South Taimali Stream Bridge was completed on July 25, 2015. With no recorded construction site accidents, the project was successfully completed 119 days earlier. Given the change in the embankment line (widened watercourse) south of the Taimali stream, the project involved reconstruction of the bridge into a long-span bridge that expands the area for flood discharge, and reduces the risk of disaster in that section. Moreover, some areas were preserved for electrification and double tracking. In the future, there would be better and convenient railway transportation in Taitung after completion of the Nanhui line electrification project.

South Taimali Stream Bridge put into use

II Elevation Construction Program in Taoyuan Section after MRT Construction in Urban Areas

(I) Content of the Project

The program was approved based on the No. 0980000793 document released by the Executive Yuan on February 27, 2009. With NTD 30,845,000,000 funding, the plan was undertaken from January 1, 2009 to December 31, 2017. The main contents of the project are as follows:

- 1 The construction involved the sinking segment and elevated section of the railway, totaling 15.95km.
- 2 The mainline of the third rail was extended to the north of Taoyuan station, and the mainline of the second rail was extended to the south of Taoyuan station.
- 3 Taoyuan station, Neili station and Zhongli station were reconstructed and converted into elevated railway stations.
- 4 Four more commuter rail stations were set up, including Fengming station, Guoji Rd. station, Yongfeng Rd. station and Chung Yuan Christian University station.
- 5 Other supplementary facilities were improved at the same time. After the program is completed, 17 level crossings would be removed.

(II) Implementation achievements

- 1 The construction of the temporary station in Taoyuan was completed in 2015, and operations started on July 26, 2015.
- 2 Since the Taoyuan City Government filed a case in the MOTC on May 4, 2015 to suspend implementation of the urban renewal plan, the TRA applied for a suspension of the "TRA Elevation Construction Program in Taoyuan following the MRT Construction in Urban Areas" after completion of the Taoyuan-Neili section, which was approved by the Executive Yuan on October 2, 2015.



View of the temporary station in Taoyuan



Opening ceremony of the temporary station in Taoyuan

Construction /Maintenance Project

(I) Line maintenance

In 2015, TRA's Construction Department improved all railway lines. It changed a total of 58,693 railway sleepers and 108,399.4m steel rails. It also supplemented 18,549 m3 railway ballasts (equivalent to 108.05km) and changed 28 switch rails.

(II) Jingtong station relic recovery project

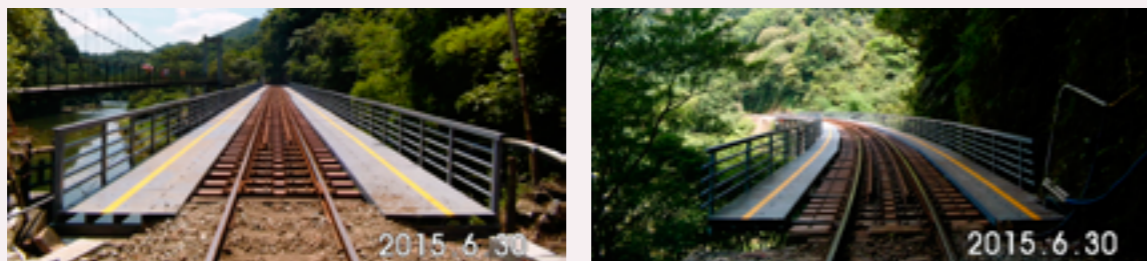
On May 1, 2003, the Taipei County Government announced and designated Jingtong station as a Taipei county heritage site based on the provisions stipulated in Article 14 of the Cultural Assets Preservation Act. The specified fixed land is located at No. 56, Jingtongkeng Subsection, Shidi Section, Pingxi Township, where architectural structures and additional spaces are also found. Pingxi celebrates the Sky Lantern Festival, which has become an important event at the Pingxi line, attracting massive passenger transport. In June, 2009, TRA allocated funds and invited professional technical operators to design a recovery plan, which included a recovery project for the main station and a 16m platform extension. The plan was approved and filed in the Department of Cultural Affairs, New Taipei City Government on June 26, 2013. The recovery project was launched on February 17, 2014 and completed on March 2, 2015, offering a comfortable waiting hall and walkway to passengers.



Jingtong station relic recovery project

(III) Completed the steel girder renewal project along Pingxi line

On May 22, 2015, the steel girder renewal project along Pingxi line was completed for five bridges; namely, Wutuku Bridge, Youkang Bridge, Pingxi Bridge, South Lingjiaoliao Bridge and Shidi Bridge. Despite environmental barriers, the steel girder renewal project went smoothly. Although the funds were limited, construction continued during the entire duration of the project. Innovative engineering methods and new materials were utilized, and the original style was maintained. Finally, the project was completed as required with zero accidents.



Pingxi line steel girder renewal project

(IV) Slope failure recovery project on the mountain side of Jiji (Jiji line K25+240)

The slope failure recovery project on the mountain side of Jiji was completed on March 13, 2015. The impact of several typhoons resulted in large areas and bare slopes with many large rocks accumulating in watercourses. To prevent mudslide caused by typhoons and heavy rains that could affect train safety in the future, TRA has undertaken a slope protection and watercourse modification project to guarantee safe train operations.



Slope failure recovery project in Jiji

(V) Ruifang acoustical barrier project (Yilan line K8+250~550)

The Ruifang acoustical barrier project was completed on March 23, 2015. To improve living conditions of residents along the railway in Ruifang, the TRA undertook an acoustical barrier project that provides a quiet environment for residents living along the railway.



Ruifang acoustical barrier project

IV Electrical Engineering Maintenance Project

(I) Power facilities

Setting up monitoring devices

To monitor contact between the overhead catenary and the bow trolley, and to prevent accidents from the overhead catenary, the TRA had set up monitoring devices in key stations in 2015 (South/north end of Taipei tunnel, Jiaoxi, Su'Aoxin station, Hualien, Yuli, Taitung, Miaoli, Dajia, Changhua, Chiayi, Shanhua, Tainan, Gangshan and Jiuqutang stations). These devices can monitor contact between the overhead catenary and the bow trolley, and can assist in identifying potential danger or risks from the overhead catenary, so as to take prompt action and measures to prevent accidents.



Set up monitoring devices

Auxiliary line for messenger wire

To prevent accidents in connection to the 49.5mm² messenger wire, TRA reinforced the 49.5mm² messenger wire above the cantilever for level crossings in key areas and stations including Qidu, Qidu station, Shulin station, Shulin railroad yard, Zhunan station, Tanwen station, Dashan station, Houlong station, Bashatun station, Xinpu station, Tongxiao station, Yuanli station, Rinan station, Chiayi station, and Tainan station. So far, there had been no accidents in relation to the 49.5mm² messenger wire after installation.



Messenger wire added with auxiliary line

Power maintenance lorry and high-speed overhead catenary maintenance lorry

The Power Maintenance System Improvement Service Project was launched and bidding was opened on December 8, 2015. Contract awarding was scheduled on February 16, 2016. The contracted party was required to make the specifications and purchase the overhead catenary maintenance vehicles. Four vehicles were delivered in 2015, and another three would be delivered in 2016.



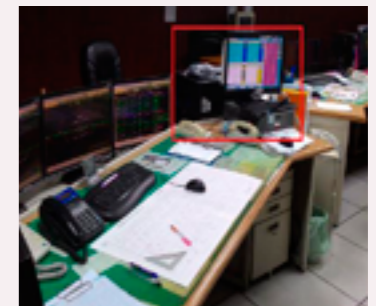
Newly purchased power maintenance lorry

(II) Telecommunications Facilities

Communications

(1) To improve the overall communication quality of the train dispatching radiophone system, TRA made the following key achievements in 2015:

- A Adjusted the train dispatching radiophone system which was expanded from 312 to 380 groups; eliminated 6 blind spots at the group switching center and reduced 8 jammed sections.
- B Checked the radiophones under the entire train dispatching system and found 1,227 unusable or damaged radiophones; informed relevant departments regarding budget allocation for replacement of radiophones to guarantee train safety.



Group adjustment- software/hardware upgrade for dispatching radiophone system

(2) The opening of National Museum of Marine Science & Technology led to the construction of the Shen'ao line dispatching radiophone system as well as 1 new radio base station and 5 relay stations.



Radio base station of National Museum of Marine Science & Technology

Electromechanical

A total of 14 switched-mode DC power supply system devices in the machine rooms of Hualien electrical depot (Su'aoxin ~Jinlun) and Kaohsiung electrical depot (Jinlun ~Xinying) were modified, so as to improve the reliability of a DC power supply and guarantee the transmission quality of TRA's communications system.



Switching the DC power supply system devices of Hualien electrical depot

(III) Signaling devices

In 2015, the old signaling devices were replaced to reduce the probability of fault occurrence and improve reliability.

- 1 Changed the control devices for 20 sites of Changhua-Tainan level crossings.



Large safety relay-type control unit after replacement

- 2 Improved 78 transformation units in Zhunan-Tainan, replaced 28 CMT field detection devices in the west coast line between Zhunan-Changhua, and improved cables and signaling devices 19,301meters along the Jiji line.



Improved transformers in Zhunan-Tainan

- 3 Replaced air conditioning units in the machine room for signaling devices between Zhunan-Tainan, and used products with green label.



□□□□□□□□

- 4 Upgraded the signaling system to electronic interlocking in Taoyuan's temporary station, and replaced all facilities at the station.



Upgraded signaling system to electronic interlocking in Taoyuan's temporary station

- 5 Coordinated with South Shulin station to modify ATP (Automatic Train Protection) software.

- 6 Set up new level crossings monitoring system at the sub stations of Houlong, Dajia and Chiayi.



New level crossings monitoring system at the sub stations of Houlong

Train Procurement and Replacement Project

(I) New trains

- 1 216 tilting EMUs including 152 TEMU2000 trains (19 sets) and 64 TEMU1000 trains (8 sets).
- 2 344 commuter EMUs (EMU800 model).

(II) Number of locomotives, passenger trains and cargo trains

- 276 locomotives
- 1 (1) 91 electric locomotives (2) 64 pull-push electric locomotives
(3) 105 diesel-electric locomotives (4) 16 diesel hydraulic locomotives
- 2,416 passenger trains
- 2 (1) 253 Tze-Chiang Express trains (2) 381 Tze-Chiang Express pull-push trains
(3) 902 commuter EMUs (4) 165 diesel EMUs
(5) 53 diesel passenger trains (6) 555 passenger trains with air-conditioning
(7) 48 ordinary trains (8) 59 trains of other types
- 3 1,770 cargo trains

(III) Improvements of locomotives and trains

- 1 The project which involves adding an LED passenger information system and emergency intercom to 340 EMU500 trains is undertaken by Mercuries Data Systems (MDS), to be completed by December 31, 2016.
- 2 The projects which involve adding an LED passenger information system and renovating the emergency intercom on 381 Tze-Chiang Express pull-push trains and 64 locomotives, are undertaken by Mercuries Data Systems (MDS), to be completed by December 31, 2016.
- 3 The project which involves the delivery of 40 control monitoring system aided devices for pull-push locomotive units was carried out by Mercuries Data Systems (MDS) on December 31, 2015.
- 4 The feeding room improvement project on the trains of Limited Express was undertaken by Yuxiang Machinery Corp., and completed on January 12, 2016.
- 5 The project requiring the removal of steps for 41 train coaches is undertaken by China Steel Machinery Corporation, to be completed by the end of December, 2020.

Special Projects

(I) TRA Program after MRT Construction in Urban Areas (Keelung-Miaoli Section)

To effectively utilize existing transportation resources and enhance TRA's commuter transport and transfer services in urban areas, TRA has set up more MRT stations from Keelung to Miaoli under the west trunk line. This would help expand railway facilities, increase line capacity and enhance commuter transport services in urban areas. The program was implemented upon the approval of the Executive Yuan, specified in document no. 0940002035 on January 27, 2005. The first revision of the program was approved by the Executive Yuan, specified in document no. 0990072342 on December 23, 2010. The second revision of the program was approved by the Executive Yuan, indicated in document No. 1020071264 on November 25, 2013. With an updated fund of NTD 8,412,000,000, the program was extended until the end of 2016. The project scope includes:

- 1 Setting up of 4 MRT stations between Keelung and Miaoli.
- 2 Improvement of 3 existing stations between Keelung and Miaoli.
- 3 Expansion of the third rail's mainline between Xizhi and Nangang.
- 4 Improvement of landscape and safety features 140km along the railway line between Keelung and Miaoli.
- 5 Addition of EMU maintenance base.

(II) New building construction program for Taipei Workshop

To meet the demand for high-speed rail, TRA needs to transfer the south tunnel between Taipei-Songshan to High-Speed Rail, which would affect the locomotive and train maintenance operation in/out of Taipei Workshop. Due to obstruction caused by the high-speed rail line, there will be railway transfer problem to another line, mutual interference and operation restriction. The MOTC and related departments held a meeting to discuss about the case. It was decided that the Taipei Workshop had to move to resolve the railway transfer problem. The first program revision was approved by the Executive Yuan and specified in document no. 0990093143 on March 1, 2010. With a total fund of NTD 17,014,000,000, the program duration was from June 1, 2005 to December 31, 2015. The second program revision was approved by the Executive Yuan and specified in document no. 1030034474 on June 17, 2014, with the total fund updated to NTD15,510,900,000. The third program revision was approved by the Executive Yuan and specified in document No. 1050002874 on January 18, 2016, with the same fund and deadline extended until the end of 2016. The project scope includes:

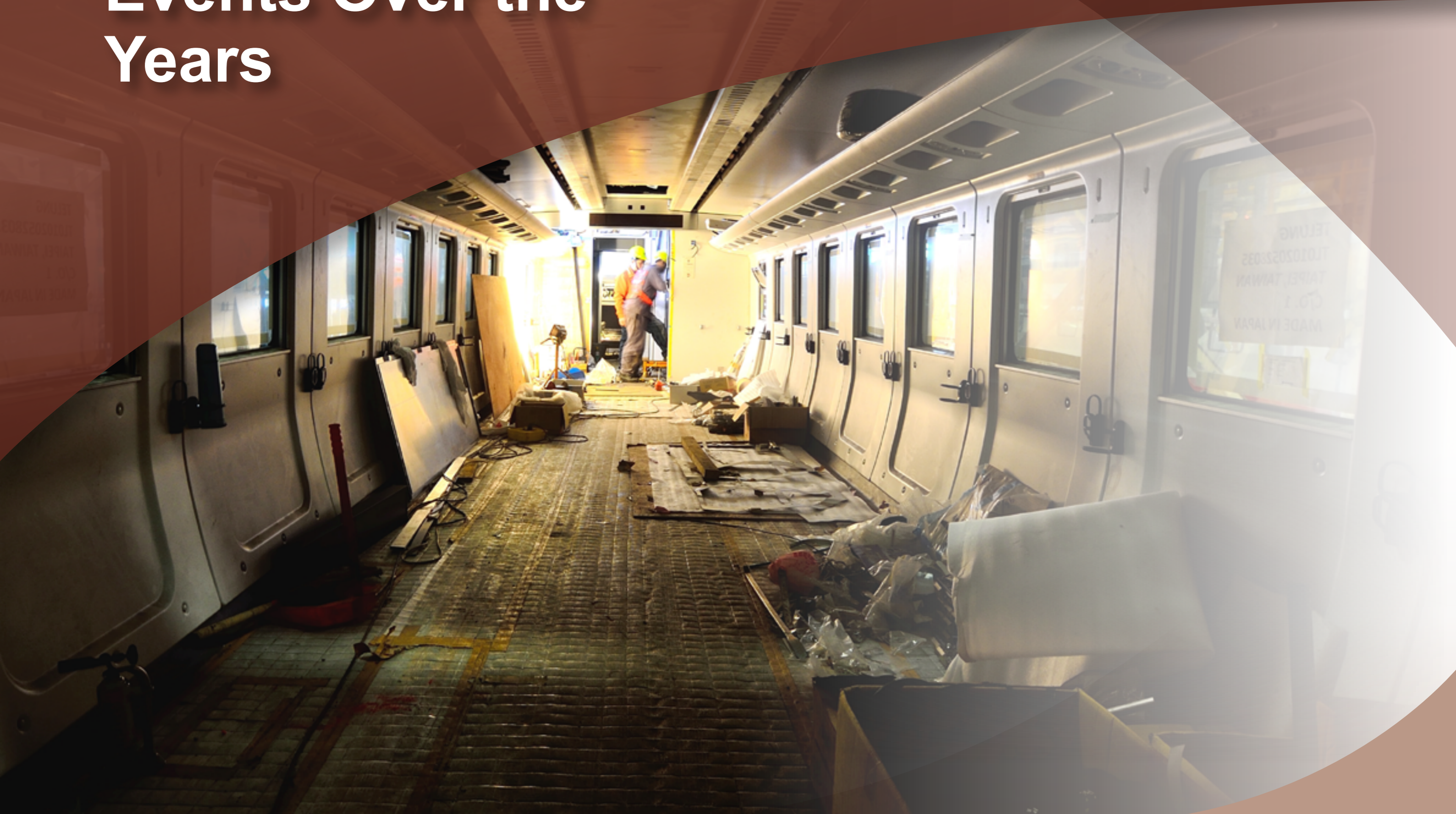
- 1 Qidu base: Removal of Qidu Depot from the base in Suxin and using the original site to improve the line shape.
- 2 Fugang base: Construction of a new EMU maintenance factory, locomotive depot, supply factory in the northern region, diesel electric locomotives, as well as electric locomotive maintenance factory, North Hukou factory line and a station in Fugang Village, Yangmei District, Taoyuan City.

(III) Transfer of Kaohsiung Workshop to ChaoChou and development of the original site

In line with the "Underground Railway Project in the Urban Areas of Kaohsiung", there is a need to transfer Kaohsiung Workshop, a Supply Factory in the Southern Region and a Sub Depot of Kaohsiung Port to ChaoChou, so as to ensure smooth maintenance of passenger and cargo trains, and facilitate manufacturing, repair and supply of parts and materials. This guarantees normal operation and train safety for passengers and cargo transport, while conducting EMU repair after the MRT and developing the newly-built ChaoChou base into a train repair center in the southern region. The overall project was approved by the Executive Yuan and specified in document no. 1020048414 on August 13, 2013. On October 3 of the same year, the financial plan was approved and specified in document no. 1020060201. Upon the approval of the project, as specified in document No. 1030034474 on June 17, 2014; NTD 930,000,000 worth of funding was provided for building a pull-push train maintenance factory in ChaoChou as part of the New Building Construction Program for Taipei Workshop. With a total funding of NTD13,899,700,000, the duration of the project is from August 13, 2013 to June 30, 2019. The project scope includes:

- 1 Transfer of Kaohsiung Workshop.
- 2 Transfer of Supply Factory in the Southern Region.
- 3 Transfer of Kaohsiung Port's Sub Depot.
- 4 Construction of a pull-push train maintenance factory.

Summary of Major Events Over the Years



1/5	<p>During the New Year holiday, the passenger transport service was completed, and daily capacity reached a record high of 897,000 passengers.</p> <p>During the 2015 New Year holiday (six days from December 31, 2014-January 5, 2015), TRA ran 314 additional trains (201 trains along the trunk line of the eastern region, 113 trains along the trunk line of the western region). The number of transported passengers reached 4,540,000, and the total revenue of all lines reached NTD 430,000,000, which were increased by 4.8% and 10.26% unlike during the 2013 New Year holiday. The daily transport capacity on December 31, 2015 reached as high as 897,000 passengers, which recorded the highest number of passengers in TRA history.</p>
1/9	<p>Registration of new recruits selected based on the 2015 special examination.</p> <p>119 new recruits were selected based on the special examination held in 2015; they were set to undergo practical training for the first time.</p>
1/12	<p>TRA adjusted the new regulation on ticket refunds for the first time.</p> <p>In line with operational requirements, TRA has amended the new regulation on ticket refunds since January 12. The cancellation fee for a ticket was changed from NTD13 to a different price based on the departure date. Hence, if a ticket is returned on the departure date, the cancellation fee would be equivalent to 20% of the ticket cost (and not lower than NTD20). If a ticket is returned 2-3 days before the departure date, the fee would be equivalent to 10% of the ticket cost (and not lower than NTD20). Moreover, if a ticket is returned 4-12 days before the departure date, the fee would be NTD 20. If a ticket is returned 13 days or earlier than the departure date, the fee would be NTD 10.</p>
1/26	<p>The Director General's DRC1001 administrative train was renovated into an alien-themed fantasy train called "The Evolution 1001".</p> <p>To enhance the operation service of the tourism branch line, TRA renovated the Director General's DRC1001 administrative train into an alien-themed fantasy train called "The Evolution 1001". The presentation on January 26 was hosted by TRA Director General Chou Yonghui who named the train, "The Evolution 1001". Famous author Lie Kexiang acted as the train conductor of "The Evolution 1001." The themed-train carried alien rail fans as well as Mr. Ten and Miss One with various activities organized along the Jiji branch line.</p>
1/27	<p>TRA participated in the third Taiwan/UK Railway Forum, and Director General Chou Yonghui chaired the Round-Table Conference.</p> <p>The UK Minister of State for Transport Susan Kramer visited Taiwan to participate in the third Taiwan/UK Railway Forum. The Deputy Director of the MOTC Wu Mengfen, delivered the opening address. Department heads also participated in the forum led by TRA Director General Chou Yonghui who likewise served as chairman of the round-table conference.</p>
1/28	<p>The Minister of MOTC Chen Jianyu visited Taoyuan's temporary station, and was accompanied by TRA Director General Chou Yonghui.</p> <p>The Minister of MOTC Chen Jianyu, accompanied by TRA Director General Chou Yonghui, Chief Engineer Hsu Jen Tsai, and Chief of Construction Department Li Yongchang, visited Taoyuan's temporary station at the Taoyuan Elevation Construction Project and attended the engineering briefing.</p>
2/4	<p>Director of Yuri Kogen Railway(Japan) visited TRA.</p> <p>The Director of Yuri Kogen Railway (Japan) Haluta Keluo and YURI KOGEN Mayor Tanibe Makoto, along with other delegates visited TRA at 2:00pm and were received by Director General Chou Yonghui.</p>
2/6	<p>In line with the Taichung Lantern Festival and the TRA railway elevated bridge reclamation project, Director General Chou Yonghui visited the Mayor of Taichung City Lin Jialong.</p> <p>Accompanied by Chief Secretary Zhu Laishun and Taichung Transportation Depot Chief Su Zhenlin, Director General Chou Yonghui visited the new mayor of Taichung City Government Lin Jialong to discuss issues such as the elevation design in Fengyuan Station and land use planning in surrounding areas.</p>
2/9	<p>Supervisors from NNSC Li Yuede, Wang Meiyu, and Fang Wanfu visited the bridges of TRA, and were accompanied by Director General Chou Yonghui.</p> <p>Accompanied by Director General Chou Yonghui, Transportation Department Chief Li Yongchang, and Taipei Transportation Depot Chief Xie Yaoyu, supervisors from NNSC Li Yuede, Wang Meiyu, and Fang Wanfu visited the New Zhongli Bridge, Fengshan Stream Bridge, Touqian Stream Bridge, and Zhudong Bridge to make observations in bridge inspection, maintenance and management, and to attend the engineering briefing.</p>

2/11	<p>TRA's Jiji line cooperated with Isumi Railway Co., Ltd. for cross-national promotion.</p> <p>TRA's Jiji line has cooperated with Isumi Railway Co., Ltd. for cross-national promotion since February 11, which helped facilitate exchanges between the two railway systems using a free one-day pass. This attracted foreign tourists to visit both countries. It also supported economic development and fostered better relations between Taiwan and Japan railways.</p>
2/12	<p>TRA's Hsinchu Station and Tokyo Station JR-East were established as twin stations.</p> <p>TRA's Hsinchu Station and Tokyo Station JR-East became twin stations based on the theme, "History of One Hundred Years, the Turn of the New Century". The signing ceremony was held at the Hsinchu Station square at 10:00am with TRA Director General Chou Yonghui and the Deputy Director of Japan's JR-East Nakazawa Yuji; also invited were the Mayor of Hsinchu City Government Lin Zhijian and the Member of the Legislative Yuan Liu Hsuezhang. This initiative symbolized the friendly relations between Taiwan and Japan railways. To celebrate the cooperation between the two parties, TRA offered 1,000 special iPASS cartoon edition e-tickets as souvenirs for tourists to exchange for free by simply presenting their Japanese passports. The initiative was aimed at attracting Japanese tourists to visit and take the Taiwan railway, and promoting globally the historical station of Hsinchu which is known as a "Big Metropolis and Small City with a Global Vision".</p>
2/13	<p>Legislative Yuan Member Yang Lihuan visited the elevation project at Taoyuan's temporary station, and was accompanied by TRA Director General Chou Yonghui.</p> <p>Legislative Yuan Member Yang Lihuan accompanied by TRA Director General Chou Yonghui, Chief Engineer Hsu Cairen and Taoyuan Station Chief Qiu Bangqi, visited Taoyuan's temporary station for the Taoyuan Elevation Construction Project, and attended the engineering briefing.</p>
2/14	<p>TRA's alien-themed fantasy train "The Evolution 1001" ran under the Jiji line.</p> <p>To enhance the operation service of the tourism branch line, TRA commissioned Akibo Lee, a designer and artist, to renovate the Director General's DRC1001 administrative train into an alien-themed fantasy train called "The Evolution 1001", which takes inspiration from a story about alien rail fans searching for their home. The train has started operations along the Jiji line since February 14, and helped improve service quality and promote economic development through local tourism.</p>
2/23	<p>TRA Director General Chou Yonghui visited the passenger transport system during the Spring Festival.</p> <p>During the Spring Festival, TRA Director General Chou Yonghui visited the passenger transport system in each region and exchanged pleasantries with employees on duty.</p>
2/24	<p>TRA completed the passenger transport mission successfully during the Spring Festival.</p> <p>TRA transported passengers during the Spring Festival in 2015, which lasted for 9 days from February 16-24. The line ran a total of 455 additional trains and added a total of 917 coaches. A total of 6,304,913 passengers were transported, with a daily average transport capacity of 701,000 passengers. The total revenue reached NTD638,686,942, and the daily average revenue was NTD70,965,000, which increased by 0.02% and 4.9%, respectively unlike the previous year.</p>
2/25	<p>Lighting and Operation of the First Decorated Lighting Train -- "TRA LED Holiday Train, Make A Wish".</p> <p>For the first time, TRA combined inter-island transport features with the lunar new year's lantern festival and different Taiwan lantern activities in 2015 to come up with the train decoration for the "TRA LED Holiday Train, Make A Wish" event. The lighting ceremony and launching of the "TRA LED Holiday Train, Make A Wish" initiative was hosted by TRA Director General Chou Yonghui; also invited were New Taipei City Mayor Zhu Lilun, Legislative Yuan Member Huang Zhixiong and LDC Hotels & Resorts Group General Manager Sheng Zhiren who was appointed train conductor for a day. The decorated train traveled cruise-style around the island from March 1-5.</p>
3/4	<p>TRA Director General Chou Yonghui signed a memo extending cooperation with Enoshima Electric Railway represented by its director Amano Izumi.</p> <p>TRA Director General Chou Yonghui signed a memo to extend cooperation with Enoshima Electric Railway represented by its director Amano Izumi. The event was held at the TRA's second meeting room at 8:30am. The purpose of the memo was to promote tourism and railway tourism development for both parties.</p>

3/5	<p>President Ma Ying-Jeou led the lighting ceremony during the Taiwan Lantern Festival and was accompanied by Executive Yuan Minister Mao Zhiguo, MOTC Director Chen Jianyu, and TRA Director General Chou Yonghui.</p> <p>In 2015, the lunar new year's lantern festival and activities in Taiwan were held at TRA's Xinwuri Station and the High-Speed Rail at the Taichung Station. In the afternoon, president Ma Ying-Jeou personally led the lighting ceremony and lantern activity at Xinwuri. He was accompanied by Taichung City Mayor Lin Jialong, Executive Yuan Minister Mao Zhiguo, MOTC Director Chen Jianyu, Tourism Bureau Chief Xie Weijun and TRA Director General Chou Yonghui.</p>
3/11	<p>On Arbor Day, TRA held an activity called "Valuable Trees and Vegan Bentos", promoting healthy vegetarian food and environmental protection.</p> <p>In line with the initiative to "Create a Better Taiwan through Tree Planting", TRA has organized the "Valuable Trees and Vegan Bentos" activity since March 12 on Arbor Day in Taipei, Taichung and Kaohsiung railway restaurants, which received positive response from the public.</p>
3/15	<p>TRA signed the first treaty in Tokyo, Japan. Delegates headed by TRA Director General Chou Yonghui went to Japan for the signing of agreement with Seibu Holdings and Seibu Railway Corporation.</p> <p>TRA Director General Chou Yonghui, along with MOTC's Accounting Department and Department of Railways and Highways, TRA's Catering Service Department General Manager Huang Cheng Chao, and the Accounting Office's Deputy Chief Chiu Shufen, headed to Tokyo, Japan to sign the Overall Business Cooperation Agreement and Twin Railway Agreement with the Director of Seibu Holdings Takashi Gotou and Seibu Railway Corporation Director Wakabayashi. The agreement symbolized cooperation between the two parties and a press conference was held with the presence of Japanese media to promote railway tourism.</p>
3/16	<p>In line with tourism marketing for bentos and other food products, TRA's Catering Service Department conducted the Activity of Hospitality Bear Name Voting.</p> <p>TRA's Catering Service Department conducted the Hospitality Bear Name Voting Activity, which had proposals translated into five languages/dialects; namely, Chinese, Japanese, English, Min Nan Dialect and aboriginal dialect from global language to local language. There were multiple names available for people to choose from. From 3/16-4/12, everyone was invited to vote online.</p>
3/17	<p>During the railway tourism celebration at TRA's Taipei Station, TRA and Seibu Holdings and Seibu Railway Corporation extended their cooperation initiative.</p> <p>TRA Director General Chou Yonghui, Seibu Holdings Director Takashi Gotou and Seibu Railway Corporation Director Wakabayashi were present to celebrate the cooperation initiative at the exhibition hall of Taipei Station at 10:00am, demonstrating friendly relations and exchange between the two parties.</p>
3/18	<p>Full upgrade of TRA mobile application software "TRA e-booking system".</p> <p>The mobile application software TRA e-booking system v1.0 was released and made available for download on June 30, 2014. Based on public feedback and suggestions, TRA implemented improvements and upgrades. On that day at 11:00 am, TRA e-booking system v2.0 was made available for download. The new version had a credit card payment function and online query timetable. It allowed users to select and switch to Chinese or English, and create settings. It also featured an online case reporting function with the Taiwan Railway Police Bureau, so as to shorten reporting procedures, enhance time efficiency, and improve passenger service quality.</p>
3/31	<p>To promote industrial-academic cooperation in railway education, TRA donated a train for instructional purposes at Chin Hwa High School.</p> <p>To enhance railway education and promote train repair technology in Taiwan, TRA held a donation ceremony in Fugang Base at 10:00am. Hosted by TRA Director General Chou Yonghui, the event was attended by Chin Hwa High School President Fanjiang Wenzheng and Principal Chen Guangzeng, and the Ministry of Education's Department of Technological and Vocational Education Deputy Chief Rao Bangan. Also invited to the grand event were distinguished guests such as Taoyuan City Mayor Zheng Wentsan, Legislative Yuan Member Liao Zhengjing, and Taiwan Rolling Stock Co., Ltd. President Huang Mingong. The purpose of the project was to help cultivate and enhance students' ability and knowledge in railway repair, as well as promote the development of Taiwan's train industry.</p>

4/2	<p>Signing ceremony and Nangang Railroad Yard Urban Renewal bidding project.</p> <p>To manage railway assets, TRA held a public bidding for the Nangang Railroad Yard Urban Renewal project, which was completed on December 31, 2014. The Gloria Cooperation Alliance composed of Cathay Life Insurance, Mercuries Life Insurance and Gloria Hotel Group won the contract. After further discussion, the contract was signed with Nangang International Corporation (I) and Nangang International Corporation (II) (new project company established by Cathay Life Insurance, Mercuries Life Insurance and Gloria Hotel Group). The purpose of the project was to promote urban renewal cooperation that would transform Nangang region in the future.</p>
4/4	<p>To celebrate Children's Day in 2015, TRA organized several activities like the "Happy Bentos for Children".</p> <p>On Children's Day, TRA's Catering Service Department distributed "Happy Bentos for Children" and "Metal Bookmarks in the Shape of Tickets" for 7 days from April 4-10. Moreover, it offered free gifts with purchases above a certain amount.</p>
4/7	<p>The transportation mission was successfully accomplished during the QingMing Festival.</p> <p>During the 6-day QingMing Festival holiday from April 2-7, 2015, the line ran a total of 277 additional trains and added a total of 772 coaches. A total of 4,522,383 passengers were transported and the daily average transport capacity reached 754,000 passengers, with an increase of 1.3% compared to the previous year. The total revenue reached NTD437,147,670 and the daily average revenue was NTD72,858,000, which increased by 4.4% compared to the previous year.</p>
4/14	<p>In full compliance with the civil service code of ethics, TRA Director General Chou Yonghui visited the Agency Against Corruption Chief Lai Zhexiong.</p> <p>TRA is involved with new construction projects, maintenance projects and business operations. Hence, it is very important that it adheres to the civil service code of ethics. TRA Director General Chou Yonghui together with the MOTC's Civil Service Ethics Office Chief Chen dongrong and TRA Civil Service Ethics Office Director Liao Jinsheng, visited the Agency Against Corruption Chief Lai Zhexiong and presented TRA's business undertakings such as transportation, catering and asset activation.</p>
4/18	<p>TRA Director General Chou Yonghui welcomed players who participated in the 4th 2015 TRA Softball Director-General Cup.</p> <p>During the 4th 2015 TRA Softball Director-General Cup organized by the New Taipei City Government, the Construction Political Commissar of the Executive Yuan and Commissioner of Public Construction Commission Hsu Junyi delivered the opening address, with TRA Director General Chou Yonghui welcoming players who joined the competition to win team awards.</p>
4/20	<p>The TRA Train Purchase and Replacement Plan (2015-2024) was approved by the Executive Yuan.</p> <p>The TRA Train Purchase and Replacement Plan (2015-2024) was approved by the National Development Council of the Executive Yuan. According to the plan, TRA would finish the replacement of city trains, local trains and tourism branch line trains, and manage the inter-island railway electrification and double-track of Hualien-Taitung line, as well as the fast-speed demand for commuter trains in urban areas in the northern, central and southern regions in 10 years. The purpose of the plan is to improve the service quality of the overall fleet.</p>
4/22	<p>Activity and Recognition Meeting on International Labor Day in 2015</p> <p>The Activity and Recognition Meeting on International Labor Day in 2015 was held on the 5F of the TRA Auditorium. It was jointly hosted by TRA Director General Chou Yonghui and Railway Industry Union Director Xie Shengming. In the meeting, Director General Chou Yonghui delivered a speech and emphasized the importance of reinventing a new spirit in railway safety. Also invited were distinguished guests such as the MOTC Parliamentary Secretary Zeng Daren and Highway Trade Union Director Huang Zhongfa. A total of 66 labor models were presented the Excellent Model Award by the Parliamentary Secretary Zeng Daren and Director General Chou Yonghui.</p>
4/23	<p>TRA Director General Chou Yonghui was interviewed by Asahi Shimbun.</p> <p>At 2:00pm, TRA Director General Chou Yonghui granted the Director of Asahi Shimbun Taipei Ukai Hiloshi and journalist Ye Yating an exclusive interview to discuss issues such as the Taiwan-Japan railway communication, railway cooperation and future trends in railway development.</p>

4/23	<p>TRA Personnel Office conducted the annual service training and invited Master Gong Dong to give a lecture.</p> <p>TRA Personnel Office held the annual service training at the first meeting room, and invited Master Gong Dong to give a lecture about life entitled "Thanksgiving Rather Than Complaining". TRA Director General Chou Yonghui together with the managers attended the lecture held at Level I meeting room.</p>
4/24	<p>TRA attended the 30th International Stamp Exhibition and sold the Railway Stamp Collection Book.</p> <p>In 2015, Chunghwa Post Co., Ltd. held the 30th International Stamp Exhibition of Asian Regions at the Taipei World Trade Center for 4 days from April 24-28. The TRA Catering Service Department coordinated its participation in the International Stamp Exhibition, and sold the Railway Stamp Collection Book.</p>
4/24	<p>The Ministry of Justice held the Justice Achievement Exhibition on Cross-Strait Cooperation at the Taipei Station. President Ma Ying-Jeou attended the opening ceremony, and TRA provided support to make the exhibition a success.</p> <p>TRA provided assistance to the Ministry of Justice in organizing the Justice Achievement Exhibition on Cross-Strait Cooperation. President Ma Ying-Jeou graced the opening ceremony and attended the Justice Achievement Exhibition Forum. He was accompanied by Mainland Affairs Council Chairperson Xia Liyan, Ministry of Justice Minister Low YingHsue, TRA Director General Chou Yonghui and Railway Police Bureau Director Hsue Guocai.</p>
4/27	<p>Control Yuan members such as Li Yuede visited the Hualien-Taitung region with TRA Director General Chou Yonghui and other employees.</p> <p>8 members of the Control Yuan; namely, Li Yuede, Sun Dachuan, Zhang Guimei, Fang Wanfu, Yang Meiling, Lin Yafeng, Liu DeHsun and Chen Xiaohong were accompanied by TRA Director General Chou Yonghui and other employees such as Transportation Department Director Du Hui, Planning Department Director Yang Zhengde and Hualien Transportation Depot chief Zhang Jianli when they visited the construction of the electrified station and observed the performance and condition of the Hualien-Taitung line station project. They also attended the engineering briefing.</p>
5/1	<p>MOTC Director Chen Jian-yu visited the new TRA Keelung station, accompanied by TRA Director General Chou Yonghui.</p> <p>MOTC Director Chen Jian-yu was accompanied by TRA Director General Chou Yonghui and other employees such as Transportation Department Director Du Hui, Taipei Transportation Depot Chief Gu Shiyun, and Keelung Station Chief Luo Yunshan, when he visited the new Keelung station and attended the engineering briefing.</p>
5/8	<p>The General Manager of Tobu Railway Osamu Makino visited TRA</p> <p>4 persons of Tobu Railway including the General Manager Osamu Makino visited TRA at 4:00pm, who were received by the Deputy Director Lu Chiehshen leading the related business managers.</p>
5/9	<p>To celebrate Mother's Day, Taipei Station organized an activity that highlighted filial piety and an art exhibition showcasing the "Giant Guanyin Bodhisattva".</p> <p>In celebration of Mother's Day and the Buddha's Birthday in May, TRA and the Earth Zen Association held an art exhibition entitled "Mother is a Thousand-armed Guanyin Bodhisattva". Hosted by TRA Director General Chou Yonghui, the activity was a way of paying tribute to the great mother with a thousand hands and eyes. It was also an event to honor mothers by highlighting the value of filial piety. The activity of "thousands of people transcribing classics to express the filial piety for the great mothers with a thousand hands and eyes" was open to the public and was held at the station hall at 3:00pm.</p>
5/13	<p>TRA Director General Chou Yonghui granted a special interview to Common Wealth.</p> <p>At 11:00am, TRA Director General Chou Yonghui granted Journalist Chou Huijing from CommonWealth a special interview to discuss the new Keelung station and future plans.</p>
5/26	<p>TRA co-organized and participated in the 2015 Investment Promotion Conference of the MOTC.</p> <p>The 2015 Investment Promotion Conference of the MOTC was hosted by MOTC Director Chen Jian-yu. TRA Director General Chou Yonghui together with Chief Secretary Zhu Laishun and Planning Department Deputy Chief Guo Guanhong attended the conference on the Urban Renewal Development of TRA Kaohsiung Station (units 3 and 4), Urban Renewal Development Project in the Old Dormitory Area east of Highway Station, Urban Renewal Investment Promotion Project in E1 and E2 Special Areas in Taipei Station, Surface Rights Project in the Residential Area of Section 3, Dingzhou Road (Zhongzheng District, Taipei City), Surface Rights Project in Hangzhou North Road (Zhongzheng District, Taipei City) and other asset renewal projects.</p>

5/29	<p>296 EMU800 trains of TRA were completed and delivered.</p> <p>At 10:00 am, TRA Director General Chou Yonghui and the CEO of Taiwan Rolling Stock Co., Ltd. led the ceremony at the Taiwan Rolling Stock's Xinfeng plant, highlighting the completion and delivery of 296 EMU800 trains. The Ministry of Economic Affairs' Industrial Development Bureau Deputy Director Lian Jinzhang and Hsinchu County Mayor Chiu Jingchun graced the grand event. The completion of the project was very important to Taiwan railways (MRT). Moreover, the participation of various industries in Taiwan in terms of design and manufacturing technology helps enhance train development in the country and accelerate growth of the transportation industry.</p>
6/6	<p>To celebrate the railway festival's 128th anniversary, the Catering Service Department cooperated with Franz Collection Inc. for the first time to create "souvenir porcelain plates" and promoted the Bento Mascot "Hospitality Bear".</p> <p>In celebration of the railway festival's 128th anniversary, TRA cooperated with Franz Collection Inc. for the first time to develop limited edition "souvenir porcelain plates". It was a historical moment for Tengyun Express and Puyuma Express trains with the passing-down and carrying-on concept. During the celebratory activity, the "Hospitality Bear" mascot was presented to the public. Japanese Designer and Sunday Painter Mineyuki Tsuyoshi from Hokkaido was also invited to the event held from June 6-10, 2015.</p>
6/8	<p>A cooperation meeting was held between Etsuminan Line of Japan's Nagaragawa Railway and TRA's Neiwan Line.</p> <p>Upon the recommendation of Taiwanese representatives in Japan, TRA cooperated with Japan's Nagaragawa Railway represented by its Director Sakamoto Keiji and Minister Sasaki Tsunayuki who visited TRA for further consultation and discussion. TRA's Chief Secretary Zhu Laishun hosted the cooperation meeting between Neiwan Line and Etsuminan Line. Both parties agreed to sign the agreement in September of this year.</p>
6/9	<p>TRA's celebration of the railway festival's 128th anniversary</p> <p>TRA's celebration of the railway festival's 128th anniversary was held at the Auditorium of Taipei Station. The event was hosted by TRA Director General Chou Yonghui, while MOTC Parliamentary Secretary Zeng Daren delivered the opening address and presented certificates for excellent performance in the TRA. The Association of East Asian Relations under the Ministry of Foreign Affairs, the Taipei Rapid Transit Corporation, Railway Police Bureau, Railway Culture Society, schools like Chin Hwa High School, 11 Japanese railways companies including JR-East Japan, JR Shikoku, JR-West Japan, Keihin Electric Express Railway, Seibu Railway, Tobu Railway, Enoshima Electric Railway, Sanyo Electric Railway, Isumi Railway, YURI KOGEN RAILWAY and Nagaragawa Railway, as well as 34 delegates of the Taiwan-Japan Railway Communication Society were invited to the grand event. With the purpose of "Putting Together a Team to Drive Innovation", the initiative was expected to create a better future with the help of teamwork and cooperation. During the event, senior employees were recognized for their excellence, as well as TRA partners and volunteers.</p>
6/12	<p>The Deputy Chief of JR-East Japan's Business Division Miyake Shiyunzou together with Deputy Section Chief Lokuda Takashi, visited TRA.</p> <p>The Deputy Chief of JR-East Japan's Business Division Miyake Shiyunzou and Deputy Section Chief Lokuda Takashi, visited TRA together with three other delegates at 4:30 pm to discuss future cooperation such as the first Formosa Railroad Bento Festival. They were welcomed by TRA Director General Chou Yonghui.</p>
6/13	<p>2015 Special Railway Examination</p> <p>TRA conducted the 2015 Special Railway Examination from June 13-15, and recruited a total of 869 employees.</p>
6/15	<p>The Taipei City Government coordinated with TRA for the Redevelopment Plan of West Taipei.</p> <p>TRA Director General Chou Yonghui, along with Deputy Director Zhong Qingda and the manager of Planning Department, participated in the coordination meeting hosted by Taipei City Government Mayor Ke Wenzhe to discuss the changes on the Redevelopment Plan of West Taipei.</p>

6/17	<p>TRA confirmed the basic policies for promoting the industrial-academic cooperation project. To cultivate railway talents in the fields of transfer, railway, train, and power (signaling), TRA held the Third Meeting on the Promotion of the Industrial-Academic Cooperation Project, with a total of 27 participants from TRA business units and affiliated institutions. At the meeting, the principles and policies for the Industrial-Academic Cooperation Project were finalized and expected to be implemented in 2016.</p>
6/21	<p>Completion of the transportation mission during the Dragon Boat Festival To facilitate transportation coordination during the Dragon Boat Festival (5 days from June 18-22), the line ran a total of 190 additional trains and added a total of 488 coaches. A total of 3,282,111 passengers were transported, and the daily average transport capacity reached 656,422 passengers. The total revenue reached NTD310,651,156 and the daily average revenue was NTD62,130,231. The revenue and number of passengers decreased by 2.3% and 7% compared to the same period (5-day holiday) of the previous year.</p>
6/24	<p>To uphold employee honesty and corporate competitiveness, TRA held the anti-corruption communication forum. To uphold honesty and transparency in procurement projects, TRA organized the 2015 anti-corruption communication forum held at the first meeting room. The meeting was hosted by TRA Director General Chou Yonghui, and attended by distinguished guests such as the Ministry of Justice's Agency against Corruption Deputy Director Yang Shijin, Planning Department Chief of the Executive Yuan's Public Construction Commission Chen Youjia, Prosecutor Deng Qiaoling from the Taoyuan District Court's Prosecutors Office, Transparency International (TI) Chinese Taipei Deputy Executive Officer Liao Xingzhong, Director of MOTC's Civil Service Ethics Department Chen Dongrong, Director of the Investigation Bureau's Taipei City Field Office He Zhongming, and Assistant Manager of the Bank of Taiwan's Procurement Department Yan Jinlai. It was an opportunity to share and exchange information in different fields with regard to procurement laws, so as to carry out administrative transparency and public information, and to establish a high-quality working environment in all institutions.</p>
6/26	<p>Taiwan Visitors Association and Japanese Tourism Corporation held the 2015 Japan Tourism Properties Symposium at the Taipei Station. The Japanese Tourism Corporation Director Maluo Kasuaki visited TRA together with the Chief of Business Division JR Shikoku Saitou Masuo. They attended the 2015 Japan Tourism Properties Symposium organized by the Taiwan Visitors Association and Japanese Tourism Corporation. They also invited TRA to grace the 1st anniversary celebration of the Tourism Train "Iyonada Monogatari" hosted by JR Shikoku. Moreover, they visited Songshan Station Chief Zeng Guohuang and Taipei Station Chief Jian Xinli.</p>
6/29	<p>During the opening ceremony of the new Keelung Station, President Ma Ying-Jeou recognized the efforts of TRA. The opening ceremony for the new Keelung Station was held at 10:00a.m. The event was hosted by TRA Director General Chou Yonghui and Railway Reconstruction Bureau Director Hu Xianglin. President Ma Ying-Jeou, MOTC Director Chen Jian-yu and Keelung City Mayor Lin Youchang attended the ribbon cutting ceremony. The new station used a double-island platform with four paths, so as to increase transport capacity and improve overall service quality. President Ma Ying-Jeou delivered the key address and acknowledged the efforts made by TRA in recent years. He also commended the modern design of the new station which can help promote leisure development and tourism in Keelung.</p>
7/2	<p>Based on government industrial-academic policies and railway talent requirements, TRA held a joint industrial-academic cooperation forum. The objectives of the forum were to study government industrial-academic policies, evaluate the competencies of industrial-academic students, and cultivate talents based on four aspects: transfer & dispatching, railway engineering, train skills and power signal. The industrial-academic cooperation forum was hosted by TRA Director General Chou Yonghui, and attended by directors from various colleges and departments such as the National Chiao Tung University, National Cheng Kung University, Feng Chia University, National Taipei University of Technology, National Hualien Industrial Vocational Senior High School, Vocational High School affiliated with National Taitung Jr. College, Taoyuan Chin Hwa High School, and National Kaohsiung University of Applied Sciences.</p>

7/6	<p>Completion of the Nangang Station Mall Construction bidding project and contract signing. To improve transport service for passengers and utilize space at the station, a contract for the Nangang Station Mall Construction Project was signed with Guanhua Life Corporation through Global Mall Corporation after undergoing review and selection by experts and committee members. The project is estimated to bring NTD680,000,000 worth of revenue to TRA in the next 16 years.</p>
7/9	<p>TRA signed the Strategic Cooperation Partnership Memorandum with Deutsche Bahn (DB) to create new opportunities for railway technical cooperation. To effectively improve railway talent cultivation and technical integration in Taiwan, TRA has actively promoted international industrial-academic cooperation. TRA Director General Chou Yonghui and Rolling Stock Department Head Liu Canhuang visited the DB head office in Berlin. MOTC Director Chen Jianyu was present to witness the signing of the Strategic Cooperation Partnership Memorandum between TRA and DB Director Warbanoff, which was aimed at creating new opportunities for railway technical cooperation, as well as conducting technical communication and close cooperation related to locomotives, railways, power supply and level crossings in the future. The contract signing marked another milestone for Taiwan- Deutsche railway technical cooperation.</p>
7/15	<p>The Director of Japan's Isumi Railway visited TRA together with the Mayor of Otaki Town Iijima Masami. A group of 4 people including the Director of Japan's Isumi Railway, the Mayor of Otaki Town Iijima Masami and the Parliamentary System Chief Seki Molao visited TRA at 9:00am and were welcomed by TRA Deputy Director Zhong Qingda.</p>
7/16	<p>TRA held a meeting to discuss the Generation IV Ticketing System Integration and Reconstruction Plan. TRA held a meeting to discuss the Generation IV Ticketing System Integration and Reconstruction Plan. TRA Director General Chou Yonghui chaired the meeting, with Deputy Director Lu Chiehshen and other business managers present. The Directorate General of Highways Director Chen Shouqiang, and Researchers of the Institute of Transportation Chen Peifen, Liu Zhongjie also participated in the discussion.</p>
7/17	<p>To promote "Railway Life and the Well-Being of Taiwan", TRA held the first Formosa Railroad Bento Festival. To promote "Railway Life and the Well-Being of Taiwan", TRA organized the first Formosa Railroad Bento Festival from July 17-20 during the 2015 Taiwan Food Fair held at the Taipei World Trade Center. There were 35 booths from 11 operators that participated in the activity; these were Seibu Railway Corporation, JR-East, Keihin Electric Express Railway, Taiwan High-Speed Rail, Old-Times Bento, Tangji Dining Hall and Guan Shan Bento of Lidao Township. Also invited to the activity were Executive Yuan Minister Mao Zhiguo and MOTC Director Chen Jian-yu, who acted as conductor for a day during the opening. Special products such as vegetable-rice toast and rice balls shaped like a train were also sold at the fair. In the future, there should be diversification so as to provide the public with more choices. On July 20, President Ma Yingjeou visited the fair which drew a large crowd and he made rice balls in the shape of a train.</p>
7/18	<p>The 2015 "Summer Formosa Express" Steam Train ran along the Yuli-Taitung line for the first time. The 2015 "Summer Formosa Express" Steam Train ran along the Yuli-Taitung line for the first time. Travel to Yuli-Taitung was made possible for four weekends. During the first run, Shanli station which was known as "the small station with no arrivals" started selling the souvenir platform ticket package for the first time.</p>
7/21	<p>For the first time this year, TRA conducted benchmarking visits and study of employees and volunteers with excellent performance. For the first time this year, TRA conducted benchmarking visits and study of employees and volunteers with excellent performance. TRA Special Committee Member Du Hui led the team with a total of 34 participants. They visited Miaoli Railway Museum; the National Highway Stone Tiger and Safety Turtle Conservation Exhibition (Xihu Service Area of National Highway No. 3 under the Taiwan Area National Freeway Bureau), the National Library of Public Information, and Taichung Cultural & Creative Industries Park.</p>

7/26	<p>In line with the 3D railway policy of Taoyuan, an opening ceremony for Taoyuan's temporary station was held.</p> <p>In line with the 3D railway policy of Taoyuan, Taoyuan's temporary station was finally completed after three years of work. The opening ceremony was held and hosted by TRA Director General Chou Yonghui. Taoyuan City Mayor Zheng Wentsan, Legislative Yuan Member Yang Lihuan, and MOTC Director Chen Jian-yu led the ribbon cutting ceremony. At the same time, a limited souvenir ticket package was sold.</p>
8/4	<p>To improve employee honesty and corporate competitiveness, TRA held the anti-corruption communication forum.</p> <p>To promote efficiency and honesty in government, as well as improve enterprise cohesion and consensus against corruption in enterprises and the private sectors, TRA organized a forum for enterprises involved in TRA procurement cases on 8/4 and 8/18. The event was hosted by Deputy Director Lu Chiehshen and attended by the Chief Prosecutor of the Hualien Branch Court's Prosecutors Office Xing Taizhao, and Attorney Luo Zhongcheng as speakers. Also invited were around 151 participants including the MOTC's Civil Service Ethics Department Director Chen Dongrong, TRA Level I managers as well as related business personnel and enterprises. The purpose of the event was to actively promote enterprise integrity, uphold honesty and transparency in procurement cases, carry out administrative transparency and establish a high-quality working environment in all institutions.</p>
8/13	<p>The coaches of the new Puyuma Express and Taroko Express were put into operation, while the recruitment of service staff was completed.</p> <p>TRA used the train procurement fund in Phase I to purchase 2 sets of Puyuma Express and 2 sets of Taroko Express upon approval of the Executive Yuan. The plan was to deliver the trains, conduct tests and begin operations by the end of this year, so as to improve train capacity and service quality. To improve train service quality, the recruitment of service staff was completed with the selection of 15 employees and 15 candidates on the waiting list.</p>
8/20	<p>DB International GmbH discussed the cooperation plan and related matters.</p> <p>The CEO of DB International GmbH Asia Oliver Schroder visited Taiwan to discuss the technical cooperation agreement. TRA Director General Chou Yonghui, together with the managers at level I joined the meeting for the "Discussion on the International Technical Cooperation Plan" held at the first meeting room. Through the cross-national cooperation with DB International GmbH, there would be active promotion of technical communication between the two parties. Moreover, several professional staff would be sent for training abroad, so as to cultivate mechanical and electrical service personnel in Taiwan.</p>
8/20	<p>2015 TRA Softball Director-General Cup was hosted by TRA Director General Chou Yonghui.</p> <p>2015 TRA Softball Director-General Cup was held at the Affiliated Physical Education Senior High School of National Taitung University during a two-day vacation from September 19-20. TRA Director General Chou Yonghui delivered the key address. A total of 15 teams and 280 players participated in the competition. The competition ended successfully with Hualien, Taitung and Chiayi Wenkang Teams taking the top three places.</p>
8/23	<p>President Ma Ying-Jeou led the opening ceremony of the "Pingtung-Chaozhou Railway Elevation Construction and New Pingtung Station" at Pingtung Station. He was accompanied by the Executive Yuan Minister Mao Zhiguo, MOTC Director Chen Jian-yu, Railway Reconstruction Bureau Director Hu Xianglin, and TRA Director General Chou Yonghui.</p> <p>The railway along Pingtung-Chaozhou line utilized an elevated and electrified double track. The opening ceremony for the six elevated stations which include Pingtung, Guilai, Xishi, Zhutian, Linluo, and Chaozhou was held during the day, led by President Ma Ying-Jeou. Executive Yuan Minister Mao Zhiguo, MOTC Director Chen Jian-yu, Legislative Yuan Member Wang Jinshi, Pingtung County Mayor Pan Menggan, Railway Reconstruction Bureau Director Hu Xianglin, and TRA Director General Chou Yonghui officiated the ribbon cutting ceremony. President Ma Ying-Jeou delivered the key address and mentioned the electrification of Taiwan railway in the south-link line between Taitung and Pingtung, which is expected to be completed by the end of 2020. It would provide seamless high-speed rail transit service to the public. President Ma also publicly recognized the gradual transformation of the TRA that could promote tourism development in Taiwan.</p>

8/25	<p>Four railway companies; namely, TRA, Seibu Railway, Keihin Electric Express Railway and JR-East Japan held "Japan & Taiwan Train Stamp Rally".</p> <p>From August 25- 31, 2015, TRA held the "Japan & Taiwan Train Stamp Rally" together with Seibu Railway, Keihin Electric Express Railway and JR-East Japan to promote tourism in Taiwan and Japan. By collecting train stamps from 5 of the 10 specified stations (2 Taiwan stations +3 Japan stations or 3 Taiwan stations + 2 Japan stations), passengers can redeem a special souvenir gift from the flagship store of Taiwan Railway Shop in Taipei Station and Keihin ITC at the international station of Keihin Electric Express Railway in Kaneda Airport. Passengers would surely enjoy the experience and charm of the Taiwan-Japan railways during the stamp rally activity.</p>
8/26	<p>TRA assisted the Taiwan Area National Freeway Bureau in holding the 16th Golden Road Award Ceremony.</p> <p>TRA assisted the Taiwan Area National Freeway Bureau in organizing the 16th Golden Road Award Ceremony held at the Auditorium in 2015. TRA Director General Chou Yonghui along with MOTC Director Chen Jian-yu attended the ceremony and recognized the units that had exemplary performance based on 6 aspects: excellent landscape along the railway, road and MRT, environmental maintenance of the station, road maintenance, facilities maintenance, road and personnel information, and outstanding construction & lifetime achievements. TRA received 3 awards for environmental maintenance of the station, road maintenance, and facilities maintenance.</p>
8/26	<p>Haluta Kelou, the Director of Yuri Kogen Railway, Japan took the inter-island train in Taiwan.</p> <p>Haluta Kelou, the Director of Yuri Kogen Railway Japan, together with journalist Ms. Hashimoto Tomoko from the head office of Kahoku Shinpo in Akita, Japan, visited Taiwan to experience the TRA railway and appreciate its surrounding sceneries. To promote Taiwan railway tourism internationally, TRA coordinated with Yuri Kogen Railway to organize an inter-island train tour of Taiwan for Director Haluta Kelou and Ms. Kahoku Shimpo, so they could appreciate the sights along the Taiwan railway.</p>
8/26	<p>Announcement of the 2015 Railway Special Examination results; 702 persons were recruited, and a second-round of tests for rank and file employees was conducted.</p> <p>The 2015 Railway Special Examination results were announced. A total of 702 persons were recruited, including 528 regular employees and 174 additional staff. There were also 482 rank and file employees under train dispatching, mechanical engineering, inspection engineering and railway maintenance engineering who passed the first round of test and proceeded to the second round for the physical fitness test.</p>
8/26	<p>Opening Ceremony of the Shoufeng Elevated Station</p> <p>The new elevated Shoufeng station was inaugurated. The railway from Shoufeng station to Nanping station was extended from single track to double track, and the Shoufeng station was elevated to solve the flooding problem. After the double track and electrification project between Shoufeng and Nanping, the waiting time for the crossing of trains was reduced by 3-5 minutes. The line capacity increased and the crowd during vacation and the holidays eased along the east trunk line. The train transit function along the Hualien-Taitung line and south line improved, as well as station utilization and line performance. The construction of Phase-I has already been completed with Phase-II expected to be completed by August 2016.</p>
9/4	<p>A twin station relationship has been established between TRA Neiwan Line and Japan's Nagaragawa Railway Etsuminan Line.</p> <p>TRA Neiwan Line established a twin station with Japan's Nagaragawa Railway Etsuminan Line at the Plaza in the heart of Zhudong. The agreement was signed by TRA Director General Chou Yonghui and Japan's Nagaragawa Railway Director Hioki Toshiaki. Also invited in the contract signing were MOTC Director Chen Jian-yu, Legislative Yuan Member Lu Hsuezhang and Hsinchu County Mayor Qiu Jingchun. To promote tourism cooperation, both parties held a "one-day pass (ticket) free exchange" activity in Neiwan Line and Etsuminan Line from the date of the contract-signing to December 31, 2016, which also helped promote railway business development.</p>

9/9	<p>MOTC announced in the official document no. 1040028644 on September 9, 2015, granting a class A rating to TRA based on the latter's 2014 annual performance evaluation.</p> <p>TRA conducted an annual self-evaluation of its business operations, planning management, financial management and HR management based on a set of criteria, goals and scores, which were reported to MOTC for assessment. TRA was granted a class A rating based on its annual performance evaluation work, as specified in the official document no. 1040028644 and announced by the MOTC on September 9, 2015.</p>
9/10	<p>TRA adjusted the regulations on the ticket refunds for group ticketing.</p> <p>TRA adjusted the regulations on ticket refunds for group ticketing, with the aim of encouraging group passengers to make their confirmation earlier, and to avoid ticket cancellations very close to the departure time, which causes a high number of vacant seats. The fee rate was adjusted from 20% to 20%, 30% and 40% based on the refund time. The closer the cancellation is to the departure time, the higher the refund rate would be. This also helps prevent the booking behavior of illegal programs or those who cancel the ticket at the last moment.</p>
9/10	<p>TRA and Japan's Railway Technical Research Institute (RTRI) signed a technical cooperation agreement.</p> <p>Delegates from Japan's Railway Technical Research Institute (RTRI) visited Taiwan to discuss the technical cooperation agreement. TRA Director General Chou Yonghui together with Level I manager attended the "Discussion on the Technical Cooperation Plan". Through technical cooperation with RTRI, TRA is able to cultivate technical talents in the fields of transportation, construction, mechanical and electrical, so as to improve technical skills, as well as railway inspection facilities, overhead catenary inspection systems, signaling and level crossings facilities, training for drivers and other key aspects of train safety.</p>
9/11	<p>The two-day-one-night cruise-style train was strictly selected for travel during the autumn and winter seasons in 2015.</p> <p>From October to December, TRA ran 8 cruise-style trains with different features and routes. Besides offering the usual scenic spots, more tourist destinations were added such as Sanxing Spring Onion Museum, Linmei Shipan Trail, Toucheng Farm, Roselle Blossom Feast, Moon World and Mud Volcano, Meinong White Jade Radish Festival, etc. On December 31st, a two-day pilgrimage to Dajia Jenn Lann Temple was added, along with a visit to the Southern Branch of the National Palace Museum and Alishan to watch the sun rise.</p>
9/14	<p>Board Member Mr. Marco Tacchella and Technical Director Mr. Gerold Ritz of Sweden Matherhorn Gotthard Bahn visited TRA.</p> <p>Board Member Mr. Marco Tacchella, Technical Director Mr. Gerold Ritz and other delegates from Sweden Matherhorn Gotthard Bahn visited TRA to discuss the technical cooperation agreement. TRA Director General Chou Yonghui together with Level I manager and the Alishan Forest Railway Management Department Director Zhen Jinsong attended the "Discussion on the International Technical Cooperation Plan". The cooperation with the said Swedish company is expected to improve professional competency and cultivate technical talents.</p>
9/15	<p>TRA sold "Happiness Rice Ball" for the breakfast service first time.</p> <p>To promote "Railway Life and the Well-Being of Taiwan", TRA organized the first Formosa Railroad Bento Festival from July 17-20 during the 2015 Taiwan Food Fair held at the Taipei World Trade Center. President Ma Ying-Jeou visited the fair and made train-shaped rice balls, which attracted a large crowd. With the positive response to the rice balls, TRA sold the train-shaped "Happiness Rice Balls" at breakfast time to attract its target market. The limited quantity of rice balls were sold in flagship stores of the Taiwan Railway Shop daily.</p>

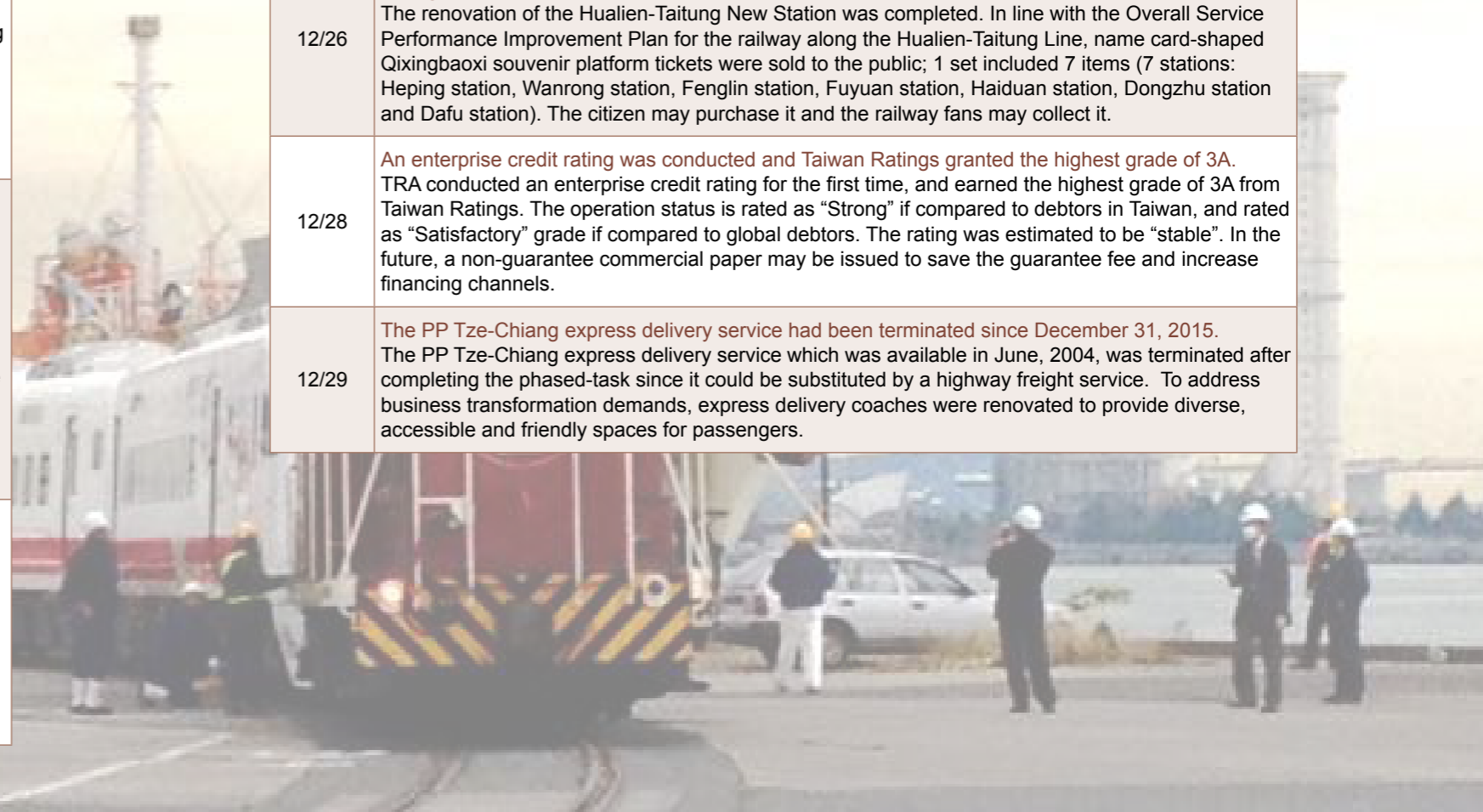
9/18	<p>TRA once again cooperated with Japan's Keihin Electric Express Railway to promote railway tourism per se and the Taiwan-Japan railway tourism.</p> <p>TRA and Japan's Keihin Electric Express Railway held the inaugural ceremony of the "Taiwan-Japan Railway Tourism" at the art exhibition hall in Taipei Station, led by TRA Director General Chou Yonghui and Keihin Electric Express Railway Director Harada Kazuyuki. The gallery was designed with "friendship" as the theme and depicted in cartoons, to symbolize the bond between Taiwan and Japan railways, as well as the cooperation between the two countries in promoting tourism.</p>
9/24	<p>Mr. Lew Yii Der of Singapore Land Transport Authority led a team to visit TRA.</p> <p>Mr. Lew Yii Der of Singapore Land Transport Authority led a team to visit TRA. They participated in a study activity organized by the Taipei Mass Transportation Manpower Development Committee. The Director of Organization and Enterprise Development Department of LTA Academy Mr. Lew Yii Der came with a group of delegates to visit TRA. TRA Director General Chou Yonghui together with the level I manager joined the meeting to share their transportation management experience. Employee Training Center Director Lin Junyao presented TRA's staff training practices and experience. After the meeting, everyone visited the Traffic Control Center of the Main Dispatch and Distribution Office.</p>
9/27	<p>Taipei Station cooperated with Arthur Murray Taiwan Dance Studio for the first time to celebrate the Mid-Autumn Festival.</p> <p>To celebrate the Mid-Autumn Festival, Taipei Station cooperated with Arthur Murray Taiwan Dance Studio to hold a Mid-Autumn Party with the theme "Tieding" (meaning definite) and "Langman" (meaning romantic). The party gathered people together to dance inside a European style checkerboard hall. People enjoyed the happy and romantic mood of the festival, giving them an international celebratory feel.</p>
9/29	<p>TRA completed the passenger transport mission successfully during the Mid-Autumn Festival. To respond to Typhoon Dujuan, it intensified the transportation. The new Tze-Chiang Express took the action of non-reserved seats.</p> <p>To coordinate with the transportation during the Mid-Autumn Festival of 5 days from September 25-29, the line ran a total of 204 additional trains and another 530 coaches. A total of 2,959,278 passengers were transported, and the daily average transport capacity reached 591,856 passengers. The total revenue reached NTD 311,772,812, and the daily average revenue was NTD 62,354,562. Due to the attack of Typhoon Dujun, the transportation service was unavailable on September 28, and the Puyuma Express and the Taroko Express trains took the action of non-reserved seats. Thus, the passenger volume was decreased. The daily average revenue and passenger volume were reduced by 6% and 16% respectively.</p>
9/30	<p>TRA held a meeting to discuss the "6-Year Program to Improve Train Safety on the Railway" as well as an anti-corruption communication forum.</p> <p>To facilitate smooth implementation of its main business, TRA held the 2015 anti-corruption communication forum and a meeting to discuss the "6-Year Program to Improve Train Safety on the Railway". The meeting was presided by Deputy Director Lu Chiehshen, and attended by distinguished guests such as Prosecutor Zhang Hongmou, the Director of the Changhua District Court's Prosecutors Office, Feng Chia University's Department of TTM Professor Ye Mingshan, TRA's Level I manager and related business personnel. With about 70 attendees, the meeting was an opportunity to discuss different work environments where civil service ethics apply. The "6-Year Program to Improve Train Safety on the Railway" was expected to be implemented under the civil service ethics platform.</p>
10/1	<p>The Shoufeng-Nanping section of Taitung line was switched to double track and electrified; the elevation project had started.</p> <p>The Shoufeng-Nanping section of Taitung line was switched to double track and electrified, while the elevation project had started. Line capacity could increase by about 4.5%, which could in turn reduce the frequency of trains crossing and eliminate level crossings in Shoufeng village effectively. The train's running time was also shortened by 3-5 minutes, easing train transit and dispatching.</p>

10/15	<p>Chaozhou workshop became operational. The Kaohsiung Depot and Train Inspection Depot were moved.</p> <p>The Kaohsiung Depot, Train Inspection Depot and Kaohsiung Workshop were moved to Chaozhou, and Chaozhou Workshop was officially put to use. The launching and opening ceremony was hosted by TRA Director General Zhou Yonghui. Also invited were distinguished guests like the Mayor of Chaozhou Town Hong Mingjiang, Kanding Township Mayor Lin Guanghua, and the Chief of the Railway Reconstruction Bureau's Southern Region Engineering Office Hsu Wengui. The construction of Chaozhou workshop was a part of the Kaohsiung-Chaozhou MRT Construction Plan, which was also the largest train base of TRA in the south. It was expected to drive economic and tourism development in Pingtung and Chaozhou regions.</p>
10/15	<p>Guilai-Chaozhou e-ticket multiple pass service was made available.</p> <p>In line with the double-track, elevated and electrified Pingtung-Chaozhou section, Guilai-Chaozhou e-ticket multiple pass service was made available since 00:00. The service was extended from Pingtung to Chaozhou. A total of 169 stations along the line utilized the e-ticket system.</p>
10/28	<p>Announcement of the 2015 Railway Special Examination results after the second round of physical fitness test.</p> <p>The 2015 Railway Special Examination results were announced after the second round of physical fitness test. There were 173 rank and file employees in train dispatching, 138 in mechanical engineering, 138 in inspection engineering, and 51 in railway maintenance engineering, totaling 500 recruits.</p>
10/29	<p>Assistant Official of Shinjuku Construction Technique Center in Tokyo, JR-East Japan Suzuki Kenju visited TRA.</p> <p>The Director of Japan's HPC HR Consulting Company Keiko visited TRA on the 13th of this month. The Assistant Official of Shinjuku Construction Technique Center in Tokyo, JR-East Japan Suzuki Kenju brought outstanding employees (a total of 23 persons) who won the "Director's Award" in JR-East Japan to visit TRA. TRA Director General Chou Yonghui chaired the meeting, while the Business Department presented the topic entitled "Current Situation and Future of Taiwan Railways". Related departments and managers attended the discussion. After the meeting, they visited Taipei Station, and Hsinchu Station which established a twin station with JR-Japan's Tokyo Station, as well as other stations along the Neiwan line.</p>
10/30	<p>Investment Promotion Conference for the Construction of 8 (5+3) New Stations that would help develop the new railway economy.</p> <p>TRA held the Investment Promotion Conference for the Construction of 8 new stations including 5 3D stations and 3 renovated stations. It broke tradition in which one contractor was considered for a single station. There was a decision to seek investment for 8 stations simultaneously in hopes of integrating railway culture and passengers' demands into an economic station with commercial activities. The station could be transformed from a single transport and transit provider into a multi-functional one that offered tours, food and shopping. It could combine commerce with humanity and art to create a different travel experience that would further develop the new railway economy and make life comfortable for everyone.</p>
10/31	<p>The Governor of Japan's Ehime Prefecture Nakamura Mihilo and the Mayor of Matsuyama Noshi Katsuhito led a team of delegates to visit Taiwan and celebrate the 2nd anniversary of cooperation, and join the Divine Sedan Chair parade.</p> <p>To celebrate the 2nd anniversary of cooperation between TRA's Songshan Station and JR-Shikoku's Matsuyama Station, the Governor of Japan's Ehime Prefecture Nakamura Mihilo and the Mayor of Matsuyama Noshi Katsuhito led a team of delegates to visit Taiwan and join the Divine Sedan Chair parade in Songshan Station. TRA Director General Chou Yonghui delivered the key address and expressed hope for a permanent partnership between the two parties in order to achieve a prosperous tourism business together.</p>
11/9	<p>To celebrate the 1st anniversary of the twin station relationship, the Director of Japan's Isumi Railway Tolizuka and the Director of Armor Team in Otaki Town Yoshino visited TRA.</p> <p>11 persons including the Director of Japan's Isumi Railway Tolizuka Liyou and the Director of Armor Team in Otaki Town Yoshino Hilou along with his wife Yoshino Shiloyo visited TRA, and were received by TRA Director General Chou Yonghui. They presented 3 armor warriors made of paper as souvenir gifts, which were publicly exhibited at the Taipei Station and Tanaka Station.</p>

11/16	<p>To improve employee honesty and enterprise competitiveness, TRA held the anti-corruption communication forum.</p> <p>To facilitate smooth operation of its main business, TRA organized a forum entitled "Hualien-Taitung Double Track, Honesty & Anti-Corruption" for enterprises involved in procurement cases with TRA. The meeting was presided by TRA Director General Chou Yonghui, and attended by the Chief Prosecutor of Hualien District Court's Prosecutors Office Lin Jincun and the Chief Prosecutor of Taitung District Court 's Prosecutors Office Huang Hantsun who were invited as speakers. Also invited were the Ministry of Justice's Agency Against Corruption Chief Secretary Lin Jiahui, MOTC Chief Secretary Lin Guoxian, the MOTC's Civil Service Ethics Department Director Chen Dongrong and Railway Reconstruction Bureau Deputy Director Wu Shengyuan, as well as related TRA business personnel. With about 130 attendees, the meeting was expected to carry out mutual assistance in administrative justice and administrative transparency, so as to prevent problems.</p>
11/16	<p>Registration of new recruits based on the 2015 special examination</p> <p>175 new recruits were selected based on the special examination held in 2015; they were set to undergo practical training for the second time.</p>
11/17	<p>TRA Director General Chou Yonghui was exclusively interviewed by ICRT radio station.</p> <p>TRA Director General Chou Yonghui was exclusively interviewed by journalist Timothy Berge of ICRT radio station at 2:00 pm to talk about issues such as MRT promotion in TRA, low carbon railway transport development and how to increase interline capacity.</p>
11/17	<p>TRA expanded its advocacy on National Level Crossings Safety Week with the 69th train safety week.</p> <p>To expand the level crossings safety advocacy, the National Road Safety Committee and the MOTC's TRA held a national level crossings safety week. To strengthen its advocacy, the 69th Train Safety Inspection and Station Order Advocacy Week was held and hosted by TRA Deputy Director Lu Chiehshen. Also invited were National Road Safety Committee Leader Liu Yunzhu and Railway Police Bureau Deputy Director Liu Nanshan to set up the National Level Crossings Safety Advocacy Platform. Through cooperation, railway and level crossings were kept safe, thereby creating awareness and value in terms of safety in mass public transport and life in general.</p>
11/23	<p>TRA and Chunghwa Post Co., Ltd. promoted the railway tourism stamp collection activity.</p> <p>TRA and Chunghwa Post Co., Ltd. cooperated to hold the Taiwan railway tourism stamp collection activity at the Taipei Station hall. The activity was hosted by TRA Director General Chou Yonghui and Chunghwa Post Co., Ltd. Director Wong Wenqi, and attended by distinguished guests such as MOTC Chief Secretary Lin Guoxian and Railway Police Bureau Director Hsue Guocai. The tourism stamp collection books that were sold contained stamps showing tourist trains like the Yuli-Taitung line of steam and cruise-style trains from Summer Formosa Express, the south-link line of cruise-style trains, and the Evolution 1001 's Jiji line.</p>
12/2	<p>Opening ceremony in line with the "6-Year Program to Improve Train Safety on the Railway" (elevator construction project in 3 stations such as Linfengying)</p> <p>Linfengying Station, Liuying Station and Houbi Station held an opening ceremony and blessing for the construction of accessible elevators. The event was hosted by TRA Director General Chou Yonghui, and attended by distinguished guests such as MOTC Director Chen Jian-yu, Legislative Yuan Member Ye Yijin, Tainan City Government's Bureau of Transportation Deputy Director Lin Yancheng. In compliance with government laws and regulations, TRA conducted balanced development to address the aging trend of society and social welfare. It improved related facilities proactively and was expected to satisfy passenger expectations and social expectations, as well as achieve safety goals.</p>
12/4	<p>Taipei Station established a twin station with JR-West Japan's Osaka Station.</p> <p>TRA's Taipei station and JR-West Japan's "Osaka station" held a ceremony establishing their twin station relationship at the VIP room of Taipei station. The agreement was signed by TRA Director General Chou Yonghui and the Director (Executive Director) of Osaka Branch in JR-West Japan Kunihilo Toshiko. The Deputy Director of Taiwan-Japan Railway Communication Society Feng Hsuegang, the Chief of Osaka Station in JR-West Japan Tetsuo Hideki and other distinguished guests attended the event. Besides strengthening the friendly relations between Taiwan and Japan railways, the project could facilitate the development of railway tourism.</p>

12/4	<p>Taiwan-Japan railway tourism art exhibition zone was unveiled at the Taipei station.</p> <p>Taiwan railway and forest railway signed an agreement with 14 Japanese railway companies. TRA had set up the Taiwan-Japan railway tourism art exhibition zone along the west corridor of Taipei Station for 6 Japanese railway companies, with Tokyo as the center (JR-east Japan, JR-west Japan, Seibu Railway, Tobu Railway, Keihin Electric Express Railway, and Enoshima Electric Railway). The exhibition zone was unveiled by MOTC Chief Secretary Lin Guoxian, TRA Director General Chou Yonghui, the Director (Executive Director) of Osaka Branch in JR-West Japan Kunihilo Toshiko, Railway Police Bureau Director Hsue Guocai, Taiwan-Japan Railway Communication Society Deputy Director Feng Hsuegang and the Chief of Osaka Station in JR-West Japan Tetsuo Hideki. The exhibit showed the history of Taiwan-Japan railway cooperation. It was a practical undertaking to support the government's initiative to double tourist arrivals, so as to facilitate the development of international tourism.</p>
12/5	<p>The Employee Welfare Committee organized a wedding ceremony for employees, sending best wishes to couples for a happy marriage.</p> <p>TRA's Employee Welfare Committee organized the "2015 Group Wedding Ceremony" for 22 couples (7 couples are TRA employees) at the Taipei Station multi-purpose Auditorium. TRA Director General Chou Yonghui officiated the wedding. Deputy Director Lu Chiehshen was also present to offer best wishes to the couples. The couples were presented with gifts like the "golden spade" and "penetration stone" which symbolized healthy and early pregnancy. Everyone wished the couples a happy marriage as they begin their new life together.</p>
12/8	<p>Joined the 2015 Taiwan-Germany Railway Transportation Forum to facilitate cooperation opportunities between Taiwan and Germany railway industries.</p> <p>TRA Director General Chou Yonghui and Rolling Stock Department Head Liu Canhuang and Construction Department Head Li Yongchang joined the 2015 Taiwan-Germany Railway Transportation Forum organized by the National Taipei University of Technology. Through international communication and resource integration, the two parties expected to establish a technical communication platform. In sharing professional knowledge, experience and information, cooperation opportunities would be open to Taiwan-Germany railway industries, creating a win-win outcome.</p>
12/10	<p>Committee meeting and field inspection to promote asset management and renewal of the old Taipei workshop.</p> <p>The "committee meeting and field inspection to promote assets management and renewal of the old Taipei workshop" was presided by TRA Director General Chou Yonghui. Also present during the meeting were Rolling Stock Department Head Liu Canhuang, Planning Department Head Yang Zhengde, Freight Service Department General Manager Chen Shuhui and Committee Member Hong Yufen, Committee Member Zhang Yushan, Committee Member Chen Tianci, Committee Member Wen Daixin, and Committee Member Chen Shuhui. To help preserve and utilize railway cultural assets, and address TRA's debt issue, the Cultural Department was requested to acquire the old Taipei workshop based on appropriation of payments instructed by the Executive Yuan on July 9, 2015.</p>
12/18	<p>TRA signed the Friendly Railway Agreement with Tobu Railway.</p> <p>TRA Director General Chou Yonghui and Tobu Railway Director Nezu Kasumi signed the Friendly Railway Agreement at the Taipei Station. Ten delegates from Japan including Tobu Railway Director Nezu Kasumi attended the grand event. During the ceremony, there was a train with a sticker symbolizing friendship between the two parties and represented Shulin station and Tobu Railway's Asakusa station. A ticket exchange system between the two stations was also launched. From December 19, 2015-December 18, 2016, a Taiwanese tourist with Tze-Chiang Express ticket (worth over NTD 150) may exchange it for a two-way souvenir edition Asakusa-Tokyo Skytree ticket for free at the foreign tourism center of Tobu Railway's Asakusa Station, or purchase a two-way TRA tourist ticket at a special rate of 1500 yen. A Japanese tourist with Tokyo Skytree tourist pass or Tokyo Skytree rail pass may exchange it for a Pingxi-Shen'ao one-day pass at TRA's Taipei station or Ruifang station.</p>
12/21	<p>The Yilan line and Japan's Sanyo Electric Railway of Hyogo Prefecture signed a "Tourism Cooperation Ticket Communication Agreement".</p> <p>To commemorate the 1st anniversary of the establishment of the twin railway, TRA Director General Chou Yonghui and a representative from Sanyo Electric Railway Yoshida Ikulou signed the "Tourism Cooperation Ticket Communication Agreement" at the second meeting room. From December 22, 2015-March 31, 2017, a Taiwanese tourist with a Northeast Corner one-day adult pass issued by TRA or a HIMEJI ONE-DAY TOURIST PASS from Sanyo Electric Railway, may exchange it for a special 1000-yen ticket issued by Sanyo Electric Railway exclusively to Taiwanese tourists, which could be used in Sanyo Department Store and an amusement park located along the line.</p>

12/21	<p>To celebrate TRA bento sales which hit a record high of 9,000,000 sets, a 10% discount was offered for 5 days from December 21-25, 2015.</p> <p>To celebrate TRA bento sales which hit a record high of 9,000,000 sets, a discount was offered from December 21-25, 2015. Anyone who purchased 2 or more bento sets (of different types) at the TRA bento shop (excluding on-train sale) enjoyed a 10% discount.</p>
12/23	<p>South Shulin Station was officially opened.</p> <p>In line with the government's promotion of the MRT in TRA, South Shulin Station was officially opened at 10:00am. The ceremony was led by Deputy Director Lu Chiehshen and attended by distinguished guests such as MOTC Deputy Director Fan Zhigu, Legislative Yuan Member Huang Zhixiong, and New Taipei City Government Deputy Mayor Gao Zongzheng. The opening of the station provided convenient urban transport and promoted local development.</p>
12/24	<p>Delivery of 2 sets (16 trains) for the Puyuma Tze-Chiang Express and 2 sets (16 trains) for the Taroko Tze-Chiang Express.</p> <p>Due to the devaluation of the Japanese currency, TRA purchased 4 sets of trains in which the first 2 sets were delivered for the Puyuma Tze-Chiang Express on the 24th and the next 2 on the 25th. A famous designer in Taiwan was invited to create the label for the head-end of the Puyuma Tze-Chiang Express train to distinguish it from others. After the preparations and successful trial run, the train was put into operation during the 2015 Spring Festival, offering high-quality and fast railway transport service to the public.</p>
12/25	<p>2015 Consensus Camp for Senior Managers.</p> <p>From December 25-26, 2015, the 2015 Consensus Camp for Senior Managers was held at the Civil Service Development Institute of the Directorate-General of Personnel Administration, Executive Yuan. The camp was hosted by TRA Director General Chou Yonghui with Executive Yuan Deputy Director Zhang Shanzheng and Civil Service Development Institute Director Lin Wentsan as speakers. With the theme "creating a vision", the activity provided a World Café Discussion and team establishment course that offered different training techniques to help facilitate innovation among senior managers in different professional fields. There were a total of 33 TRA managers (Level I and above) who participated in the training.</p>
12/26	<p>To celebrate the completion of the Hualien-Taitung New Station renovation, name card-shaped Qixingbaoxi souvenir tickets were sold.</p> <p>The renovation of the Hualien-Taitung New Station was completed. In line with the Overall Service Performance Improvement Plan for the railway along the Hualien-Taitung Line, name card-shaped Qixingbaoxi souvenir platform tickets were sold to the public; 1 set included 7 items (7 stations: Heping station, Wanrong station, Fenglin station, Fuyuan station, Haiduan station, Dongzhu station and Dafu station). The citizen may purchase it and the railway fans may collect it.</p>
12/28	<p>An enterprise credit rating was conducted and Taiwan Ratings granted the highest grade of 3A.</p> <p>TRA conducted an enterprise credit rating for the first time, and earned the highest grade of 3A from Taiwan Ratings. The operation status is rated as "Strong" if compared to debtors in Taiwan, and rated as "Satisfactory" grade if compared to global debtors. The rating was estimated to be "stable". In the future, a non-guarantee commercial paper may be issued to save the guarantee fee and increase financing channels.</p>
12/29	<p>The PP Tze-Chiang express delivery service had been terminated since December 31, 2015.</p> <p>The PP Tze-Chiang express delivery service which was available in June, 2004, was terminated after completing the phased-task since it could be substituted by a highway freight service. To address business transformation demands, express delivery coaches were renovated to provide diverse, accessible and friendly spaces for passengers.</p>



Yearbook of the Taiwan Railways Administration, MOTC

Editorial Committee Members

Chairman:

Lu Chiehshen

Vice Chairman:

He Xianlin

Zhong Qingda

Committee Members:

Hsu Jen Tsai/Zhang Jinsong/Li Yongchang

Liu Canhuang/Fu Yihong/Zheng Peiji

Yang Zhengde/Jiang Dongan/Wang Fenglan

Zhang Mingyao/Cao Dongjun/Chen Shiqi

Huang Cheng Chao/Yu Weijie/Lin Junyao

Huang Shifang/Du Hui/Huang Shixian

Chen Shuhui/Liu Jianliang/Lin Zhiping

Editor-in-Chief:

Ju Laishun

Associated Editor:

Wang Chuanxin

Executive Editors:

Wu Huifang/Luo Jianhua

Cai Jieyu/Li Wanjun

Lin TingHsuan/Hsu Yunting

Chen HuiHsuan/Huang Peiyu

2015 Yearbook of the Taiwan Railways Administration

Edited by: Taiwan Railways Administration, MOTC

Published by: Taiwan Railways Administration, MOTC

Address: No.3, Beiping W. Rd., Zhongzheng Dist., Taipei City
10041, Taiwan (R.O.C.)

Telephone: 02-23815226

Website: <http://www.railway.gov.tw/tw/>

Publishing Date: November, 2016

Journal Establishment Date: April, 1961

Designed by: Conifer Corporation

Telephone: 02-23885099

Version: Initial version (Electronic version is posted on the
official website)

Exhibited and sold at National Publications Bookstore's
Songjiang Shop

Address: 1F., No.209, Songjiang Rd., Zhongshan Dist., Taipei
City 10485, Taiwan (R.O.C.)

Telephone: 02-25180207

Website: <http://www.govbooks.com.tw>

Exhibited and sold at Wunan Cultural Plaza

Address: No.6, Zhongshan Rd., Central Dist., Taichung City
40042, Taiwan (R.O.C.)

Telephone: 04-22260330

Website: <http://www.wunanbooks.com.tw>

Price: NTD500

ISSN: 1729-3243

GPN: 2005000023

ISSN 1729-3243



Owner of copyright: TRA, MOTC

The TRA reserves all rights with regards the contents
of this book. Any use in part or whole must first be
approved the TRA in writing.

All Rights Reserved. No Duplication.

